

Technical Appendix 10.7: Charts

Chart 1: Wind Speed and Direction during the Background Noise Survey at Nantymoel Farm

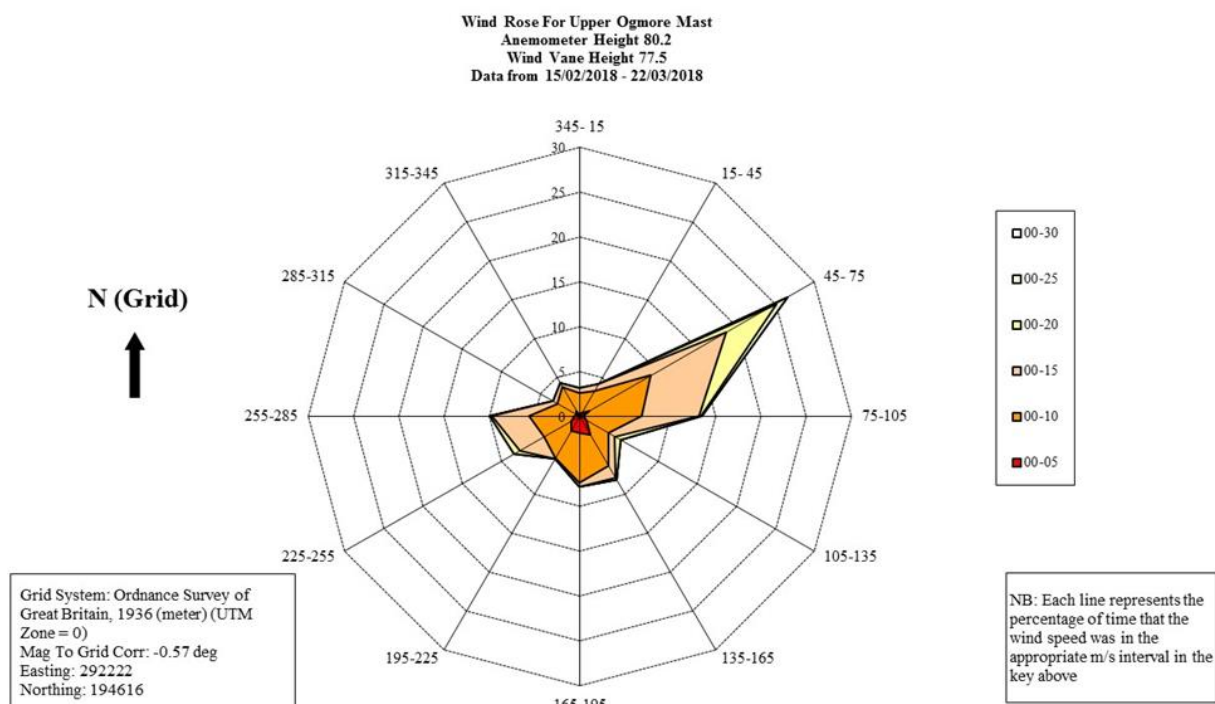


Chart 2: Wind Speed and Direction during the Background Noise Survey at Queen Street

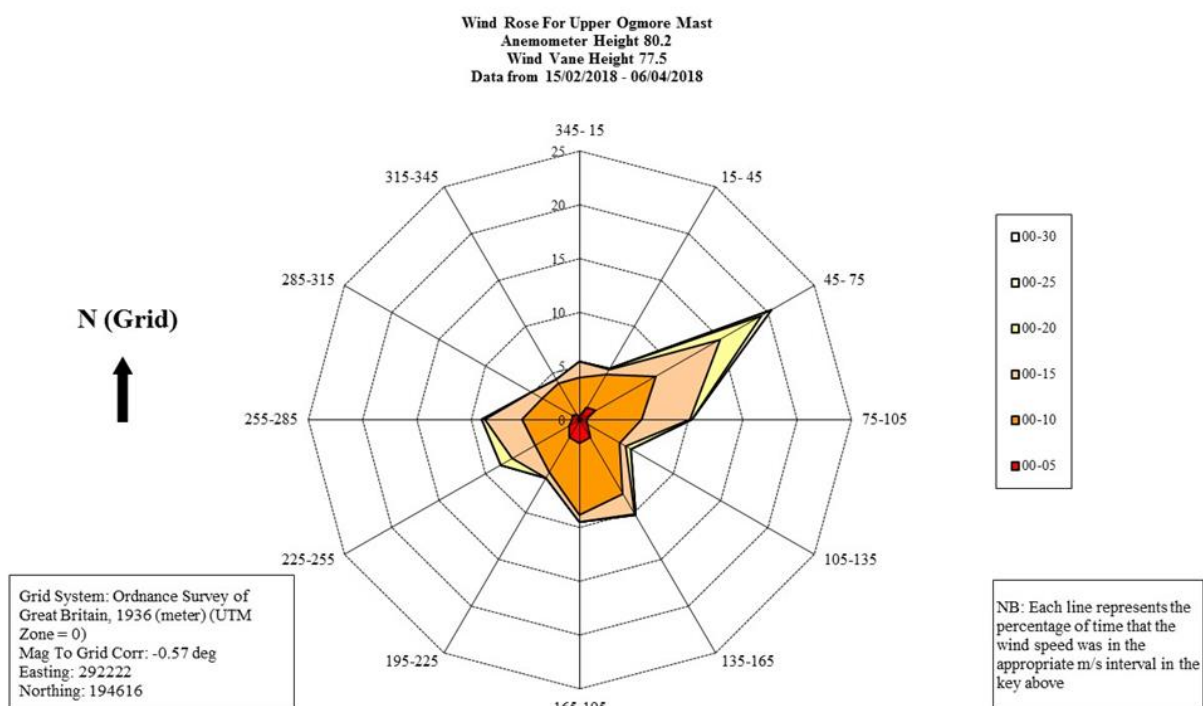


Chart 3: Wind Speed and Direction during the Background Noise Survey at Ty-Talgarth

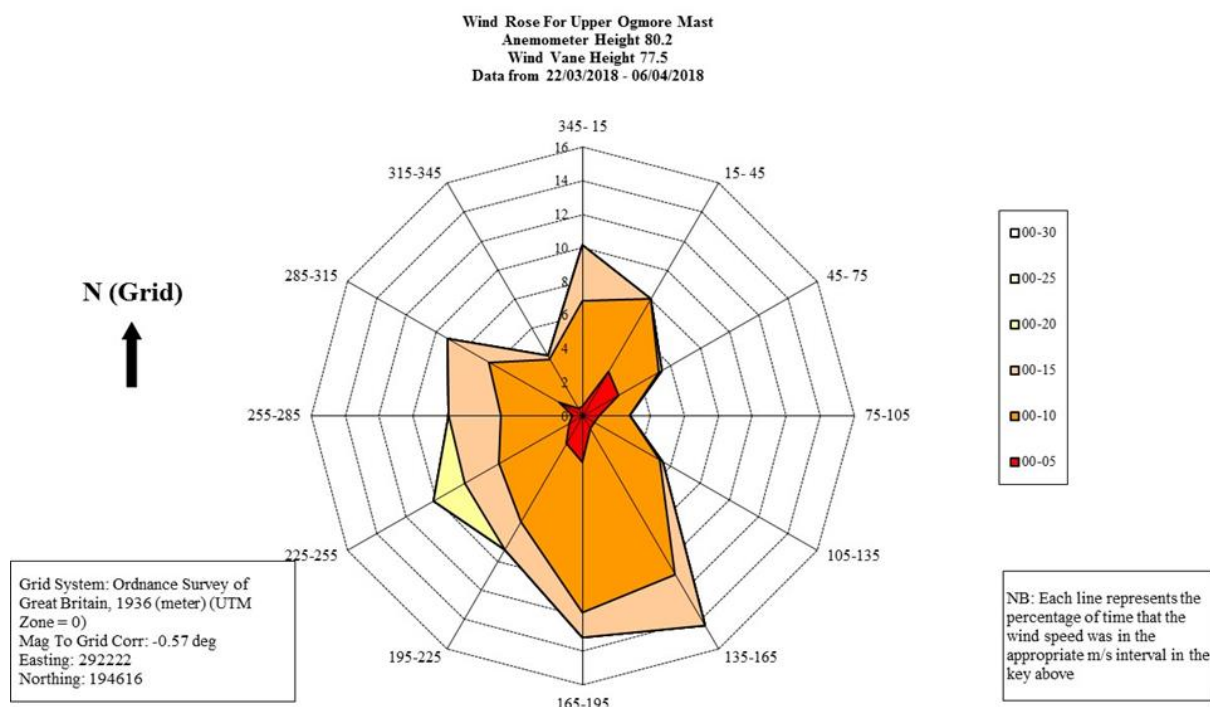


Chart 4: Measured Wind Rose over an Extended Period

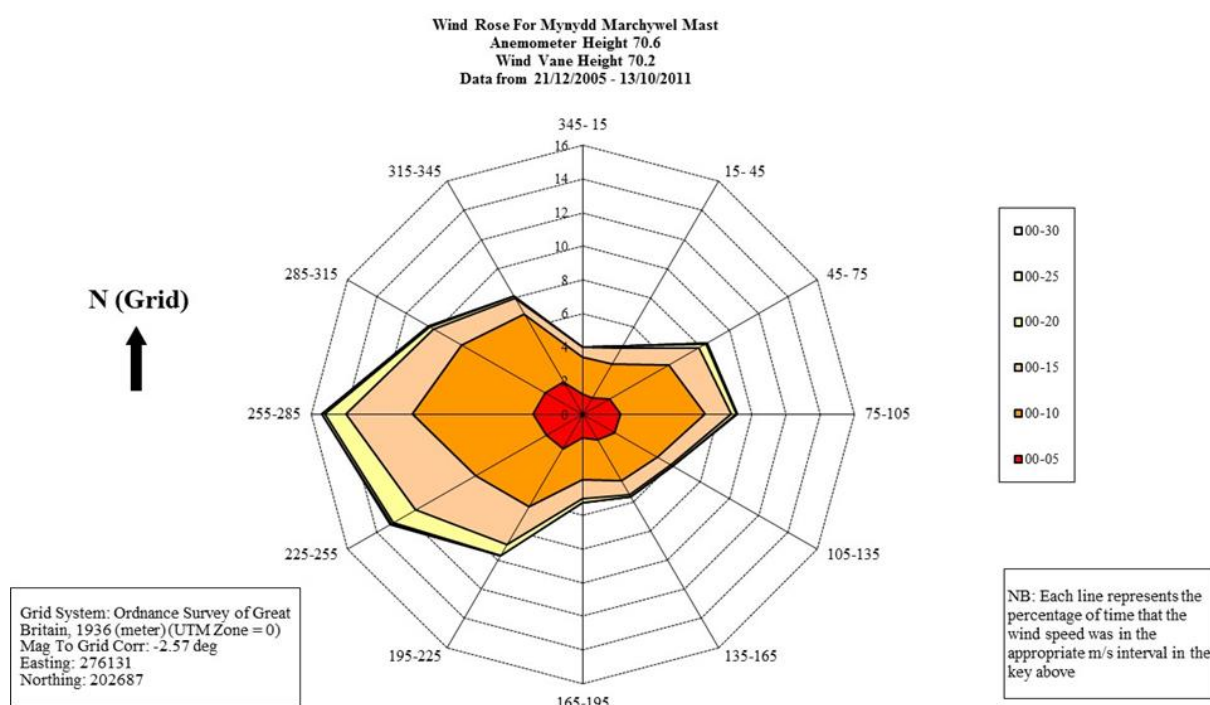


Chart 5: Downwind Predicted Noise Levels, Noise Limits and Background Noise Levels during Quiet Waking Hours at Nantymoel Farm

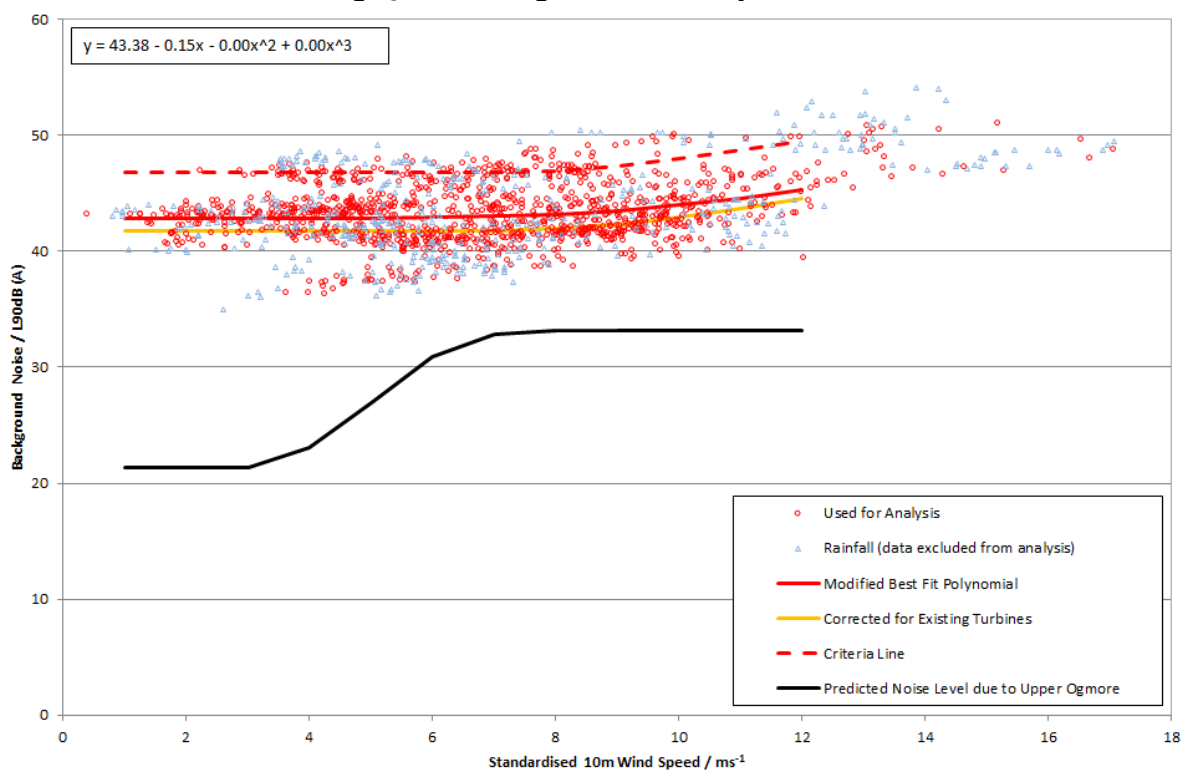


Chart 6: Downwind Predicted Noise Levels, Noise Limits and Background Noise Levels during Quiet Waking Hours at Queen Street

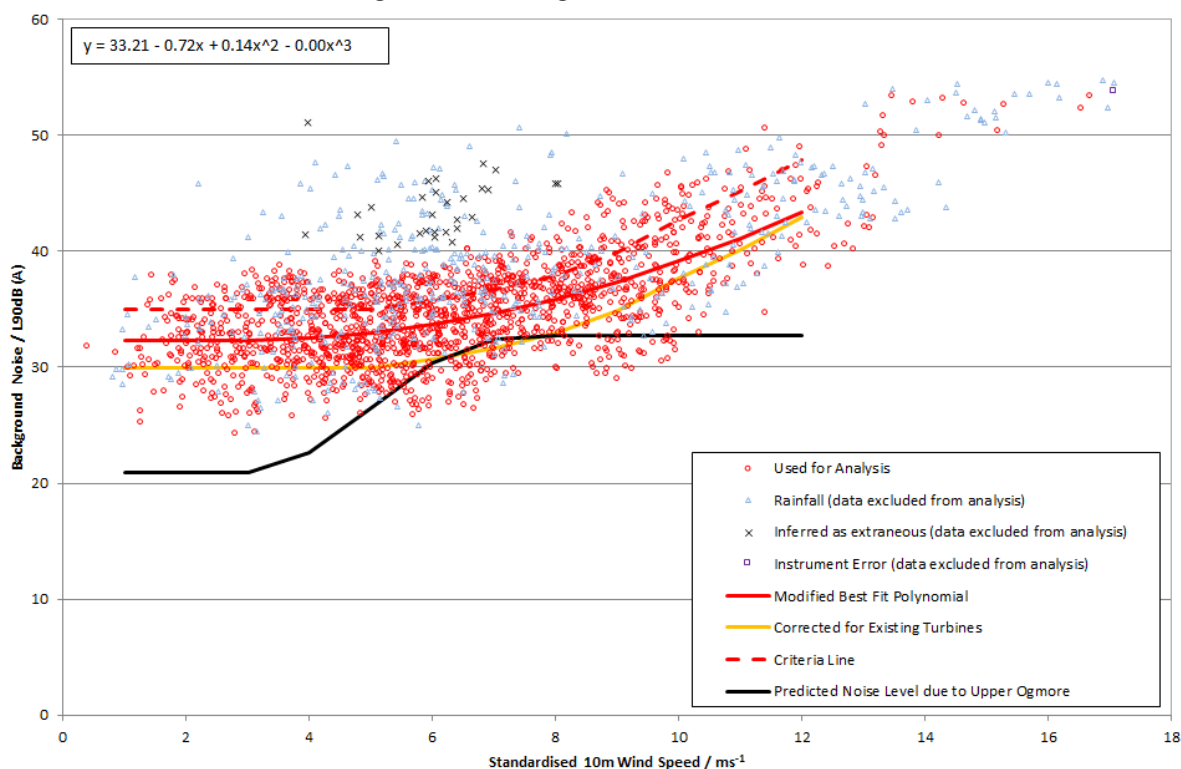


Chart 7: Downwind Predicted Noise Levels, Noise Limits and Background Noise Levels during Quiet Waking Hours at Ty-Talgarth

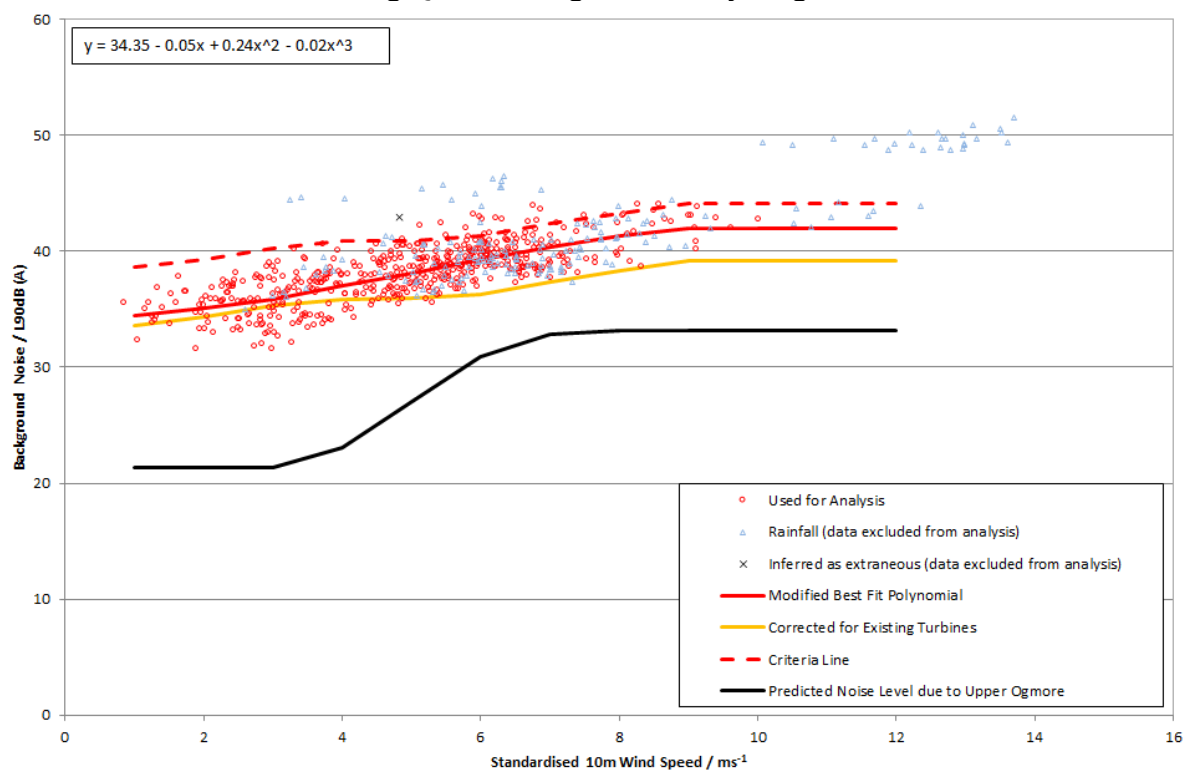


Chart 8: Downwind Predicted Noise Levels, Noise Limits and Background Noise Levels during Night-Time Periods at Nantymoel Farm

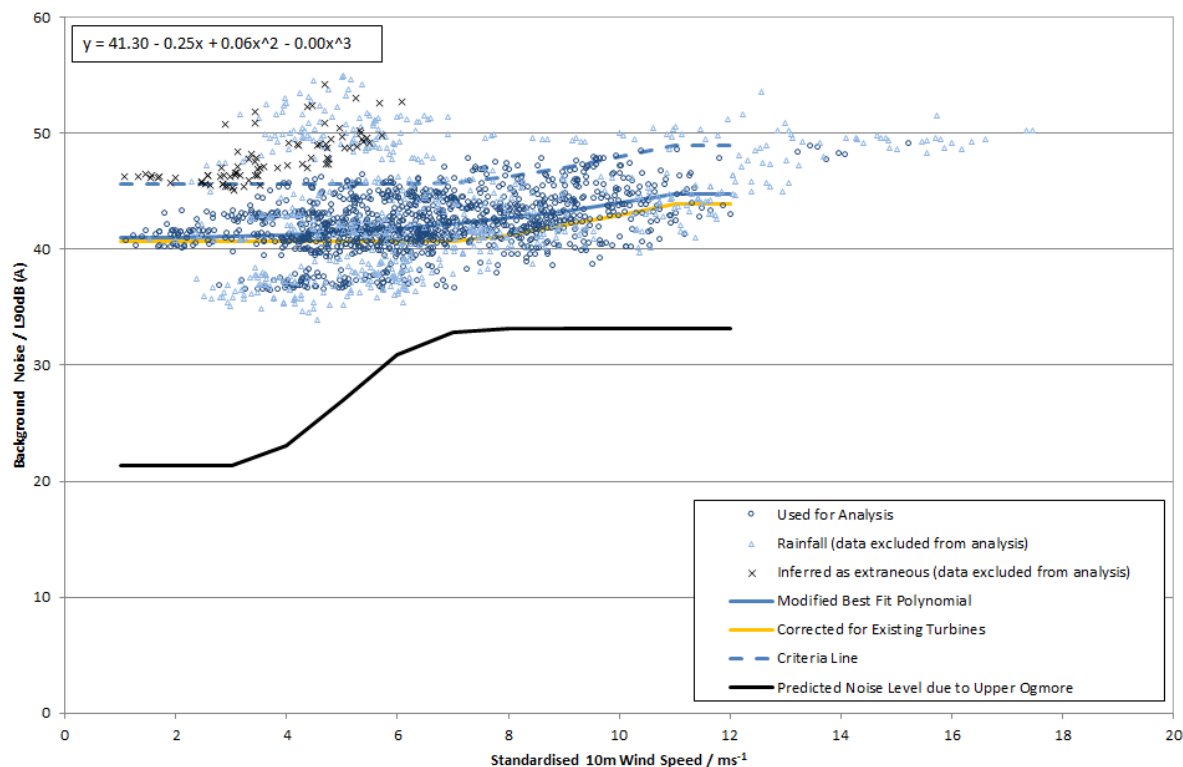


Chart 9: Downwind Predicted Noise Levels, Noise Limits and Background Noise Levels during Night-Time Periods at Queen Street

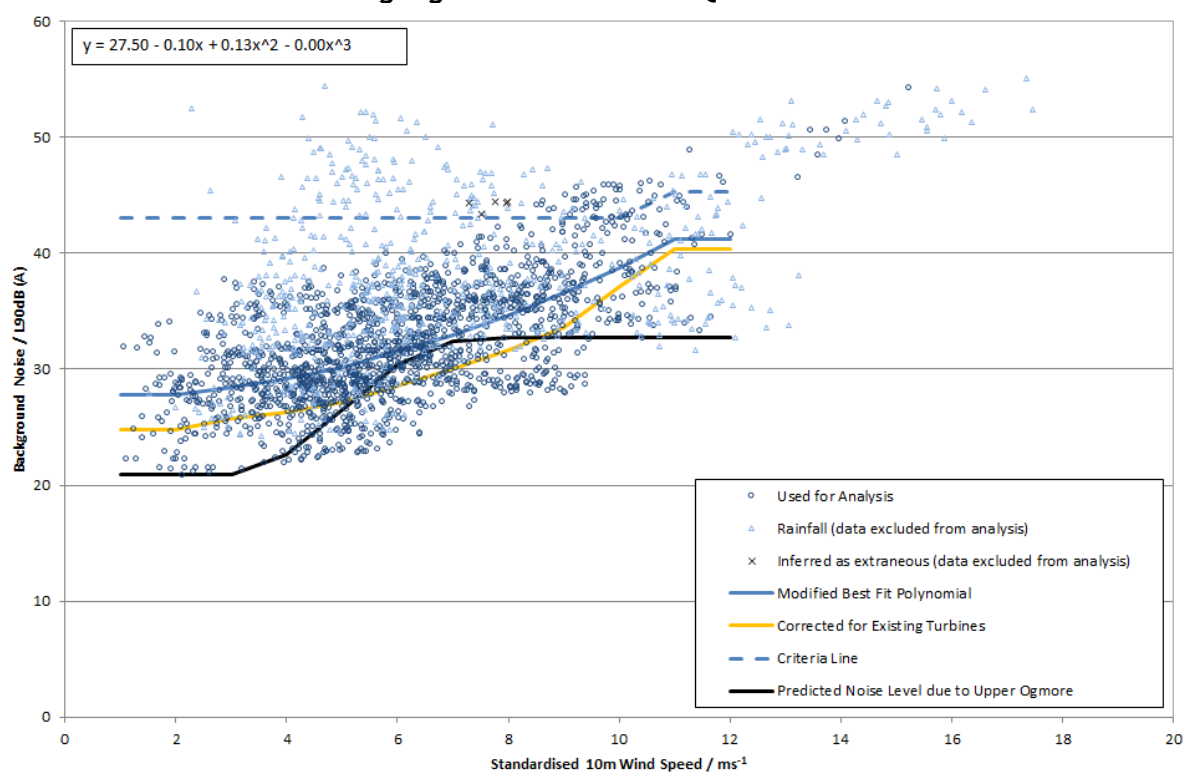


Chart 10: Downwind Predicted Noise Levels, Noise Limits and Background Noise Levels during Night-Time Periods at Ty-Talgarth

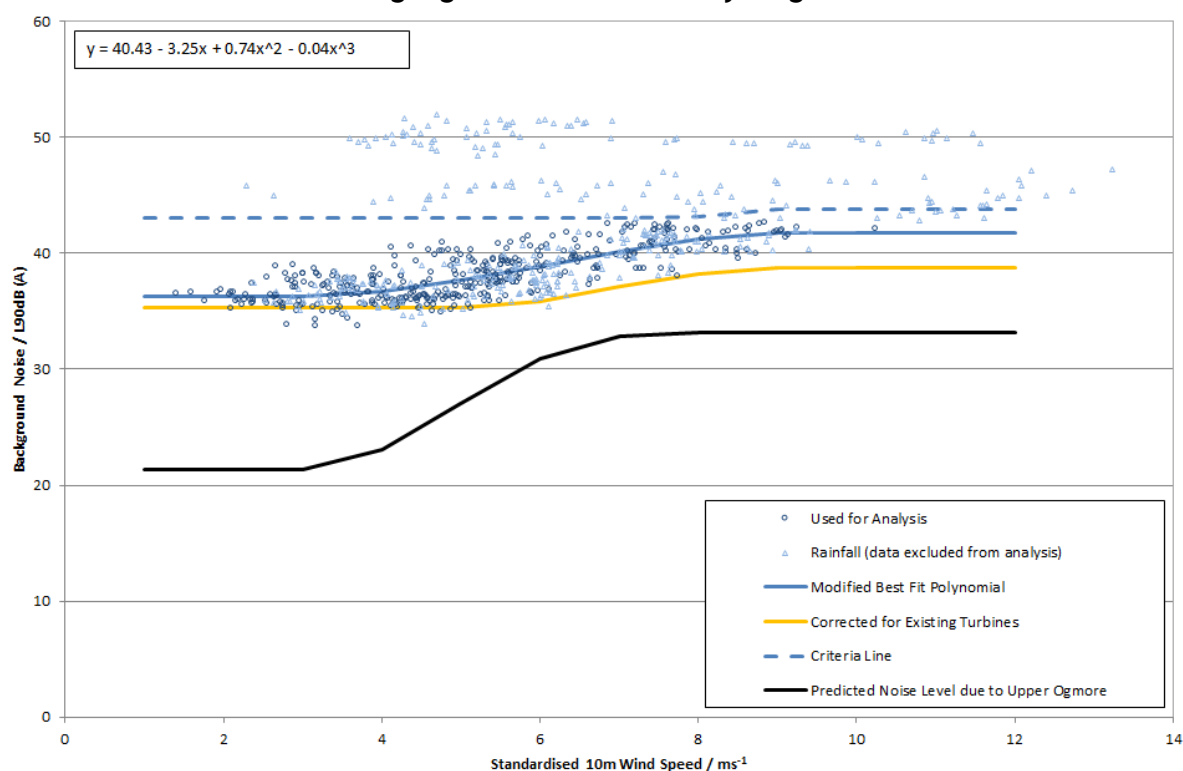


Chart 11: Downwind Cumulative Predicted Noise Levels & Noise Limits during Daytime Periods at H7

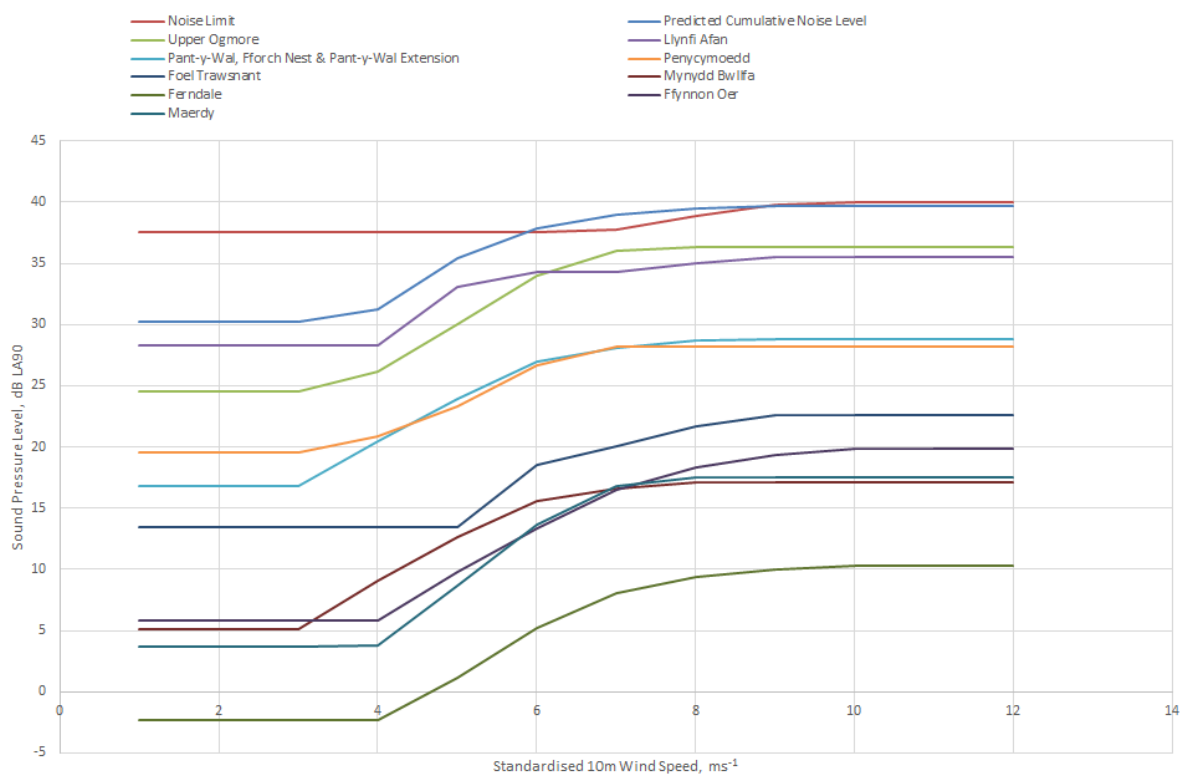


Chart 12: Downwind Cumulative Predicted Noise Levels & Noise Limits during Daytime Periods at H13

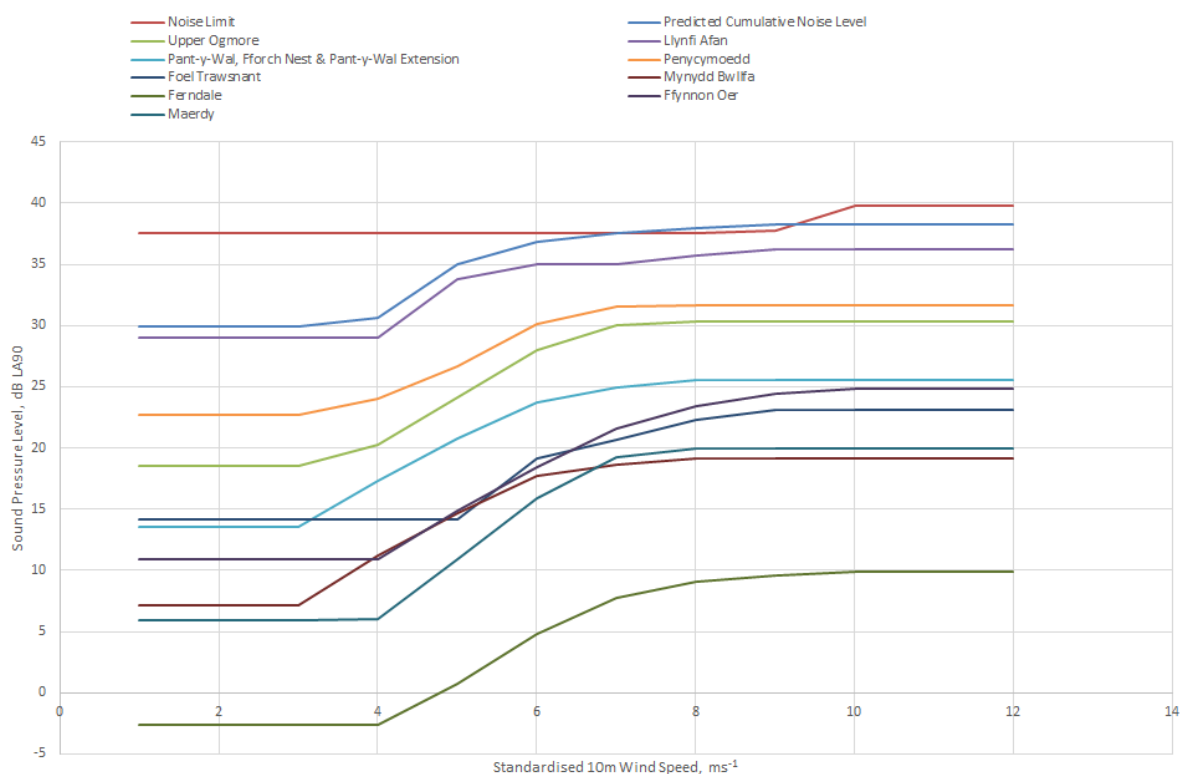


Chart 13: Downwind Cumulative Predicted Noise Levels & Noise Limits during Night-Time Periods at H15

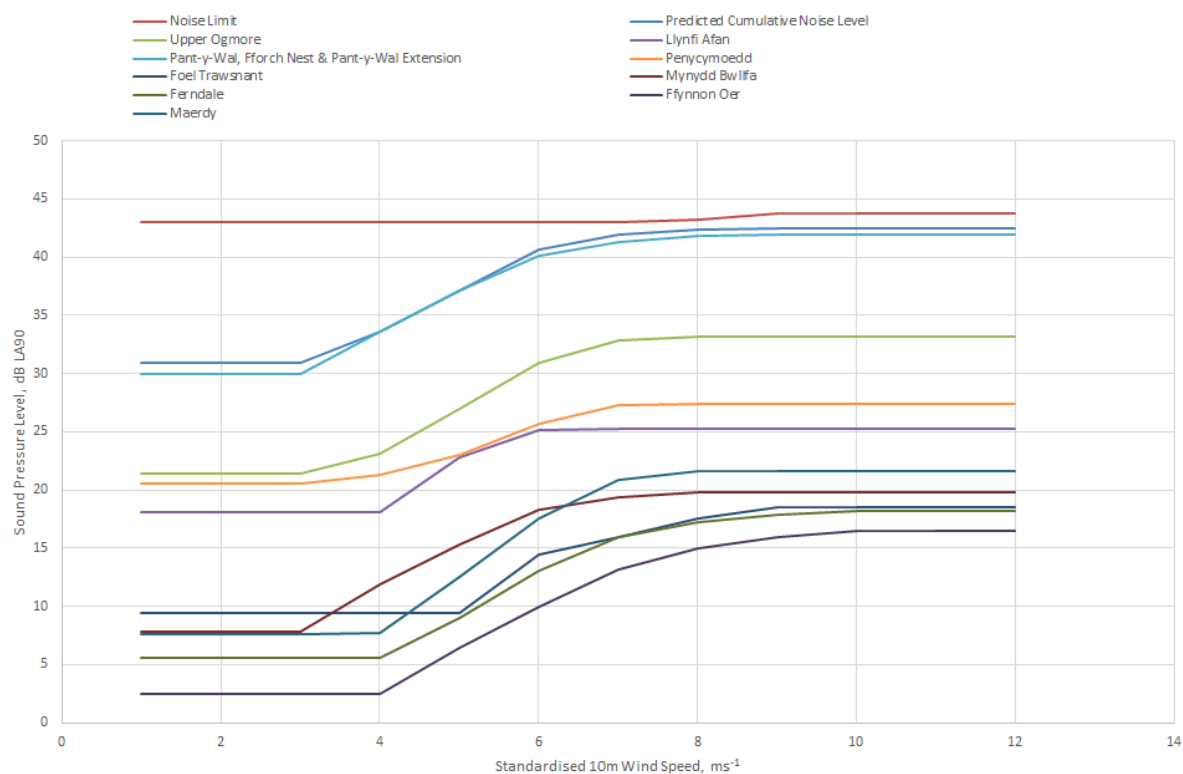


Chart 14: Downwind Cumulative Predicted Noise Levels & Noise Limits during Daytime Periods at H7 with Mitigation

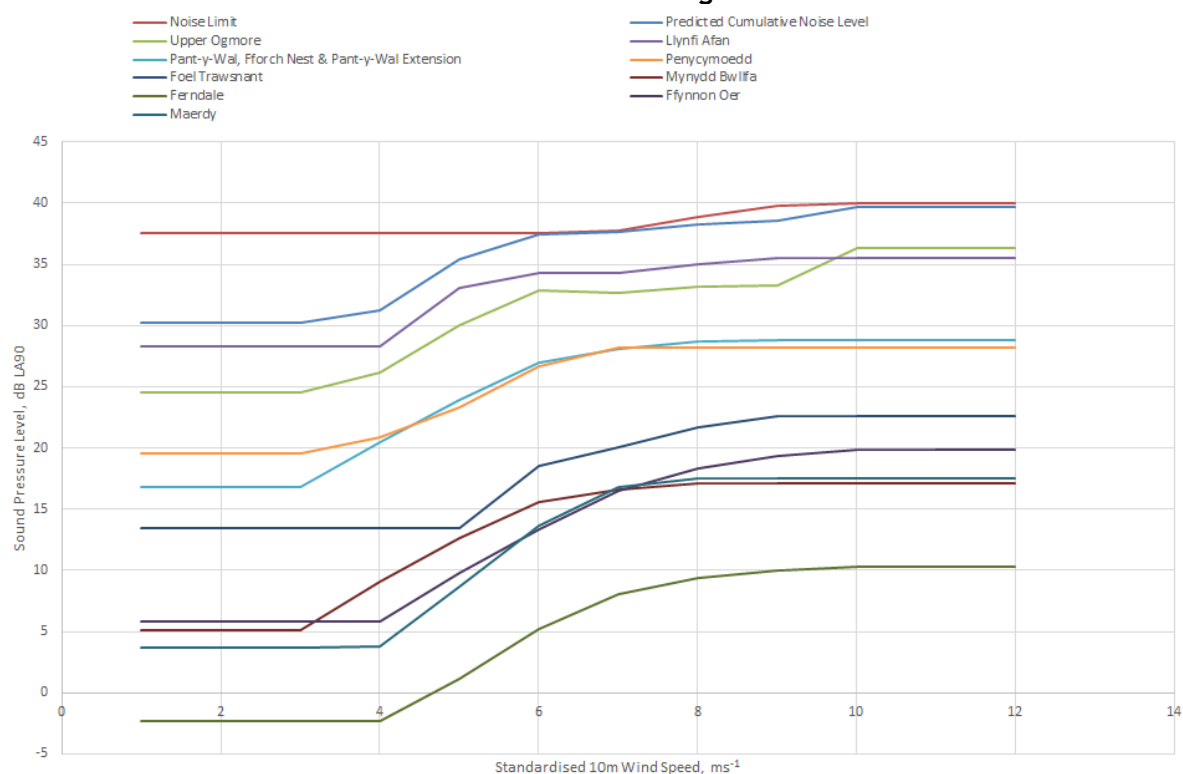


Chart 15: Downwind Cumulative Predicted Noise Levels & Noise Limits during Daytime Periods at H13 with Mitigation

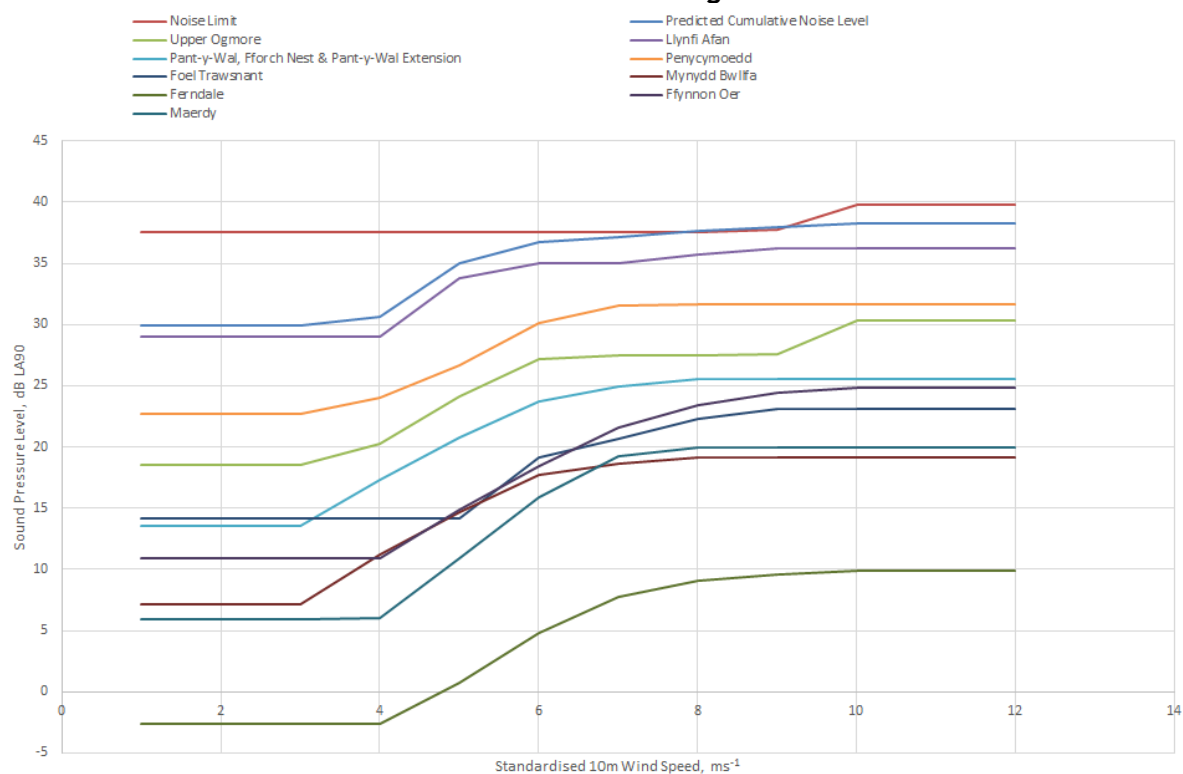


Chart 16: Cumulative Predicted Noise Levels by Direction & Noise Limit during Daytime Periods at H4

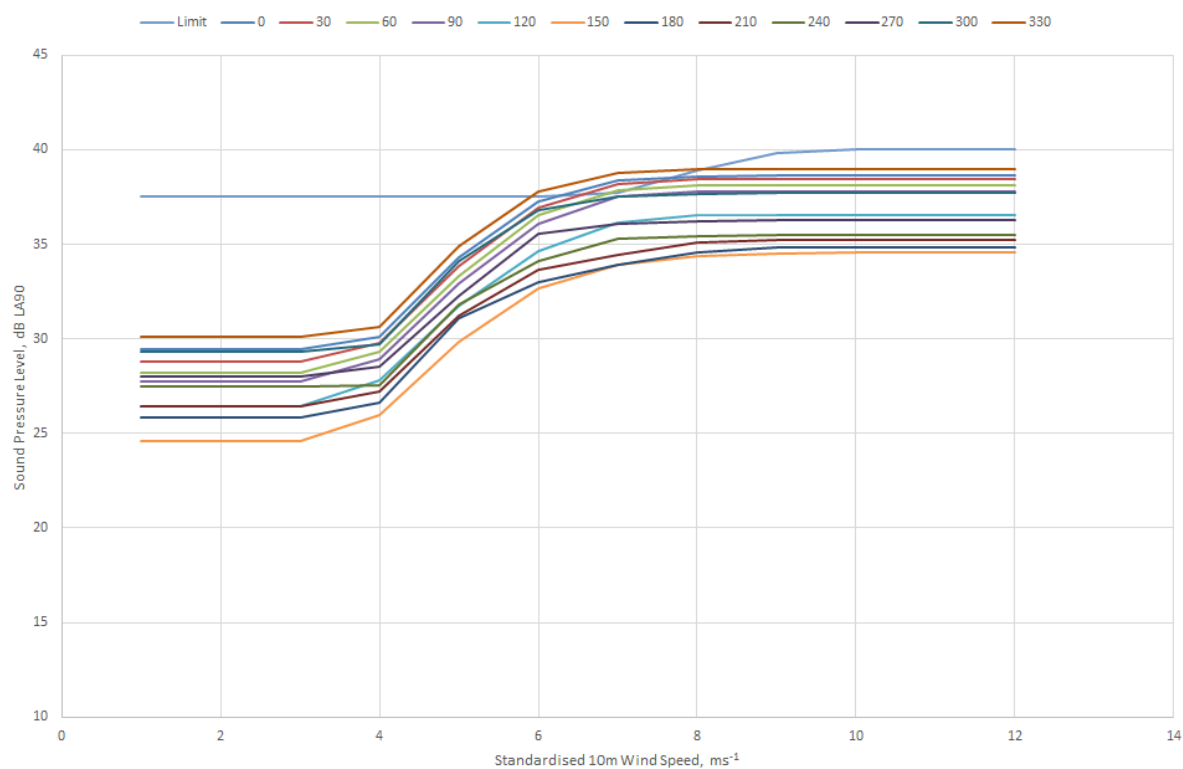


Chart 17: Directional Predicted Noise Level Breakdown during Daytime Periods at 7 ms⁻¹ for H4

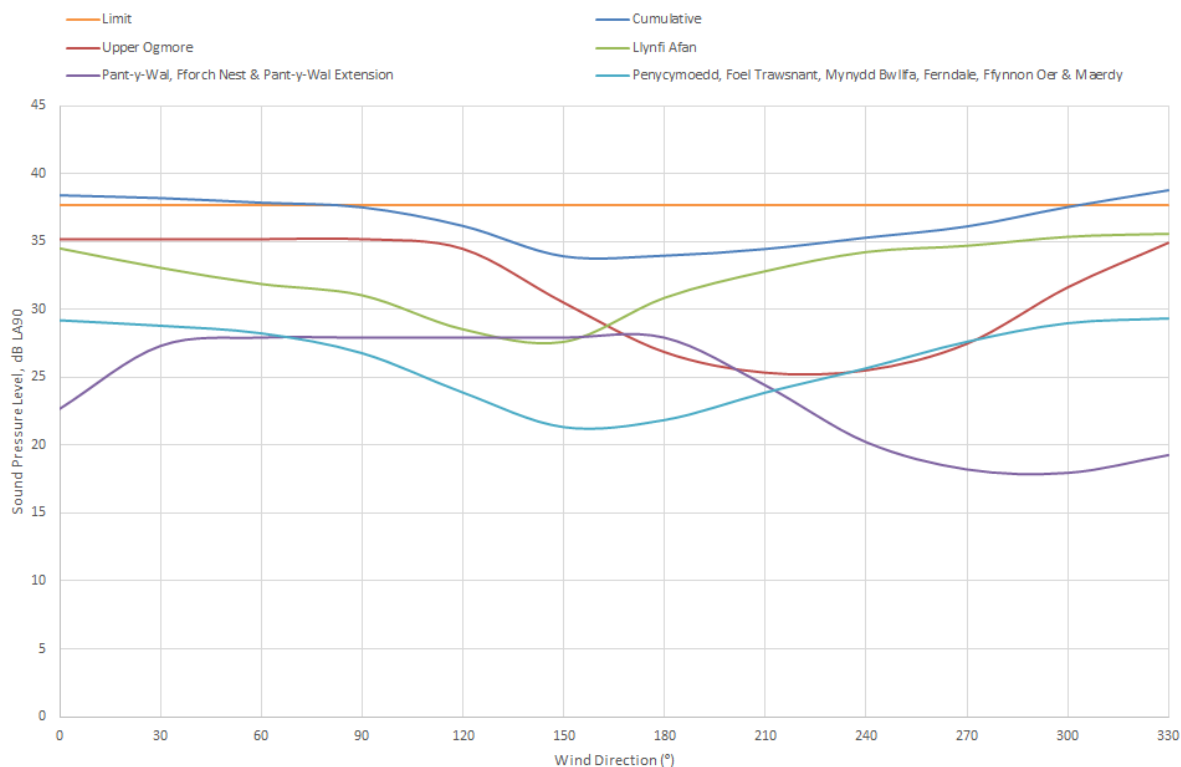


Chart 18: Cumulative Predicted Noise Levels by Direction & Noise Limit during Daytime Periods at H7

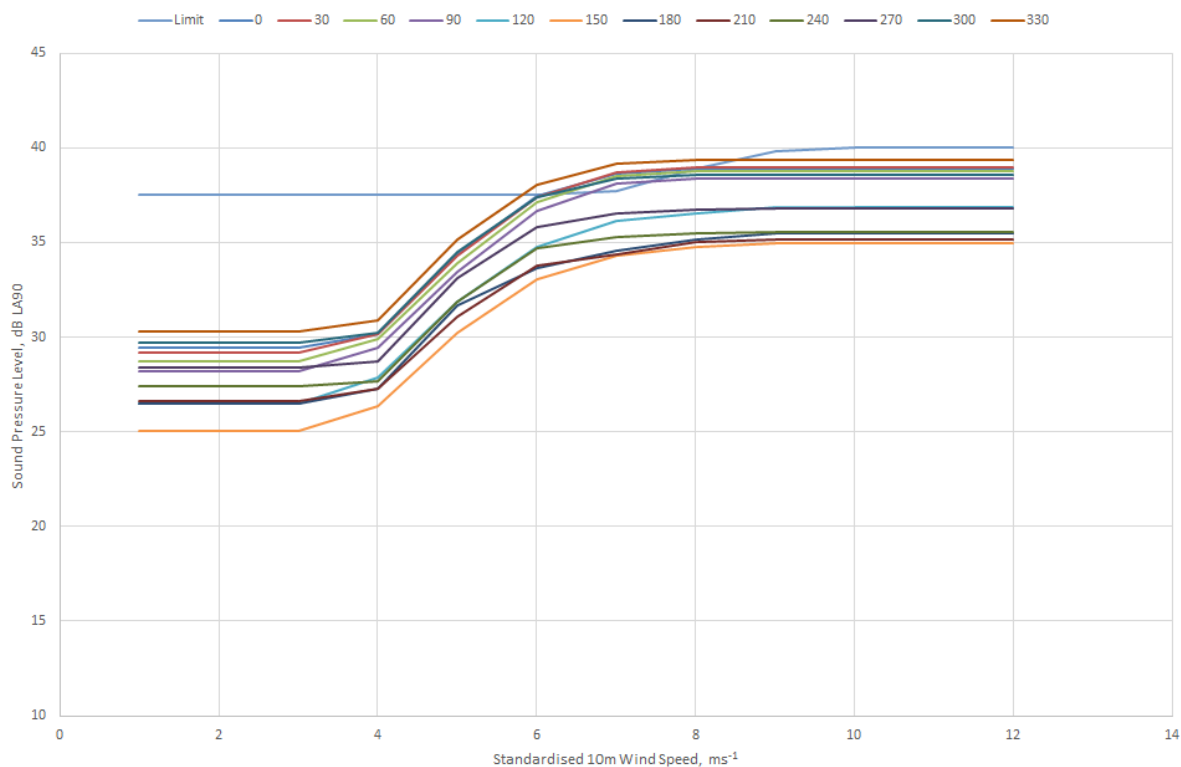


Chart 19: Directional Predicted Noise Level Breakdown during Daytime Periods at 7 ms⁻¹ for H7

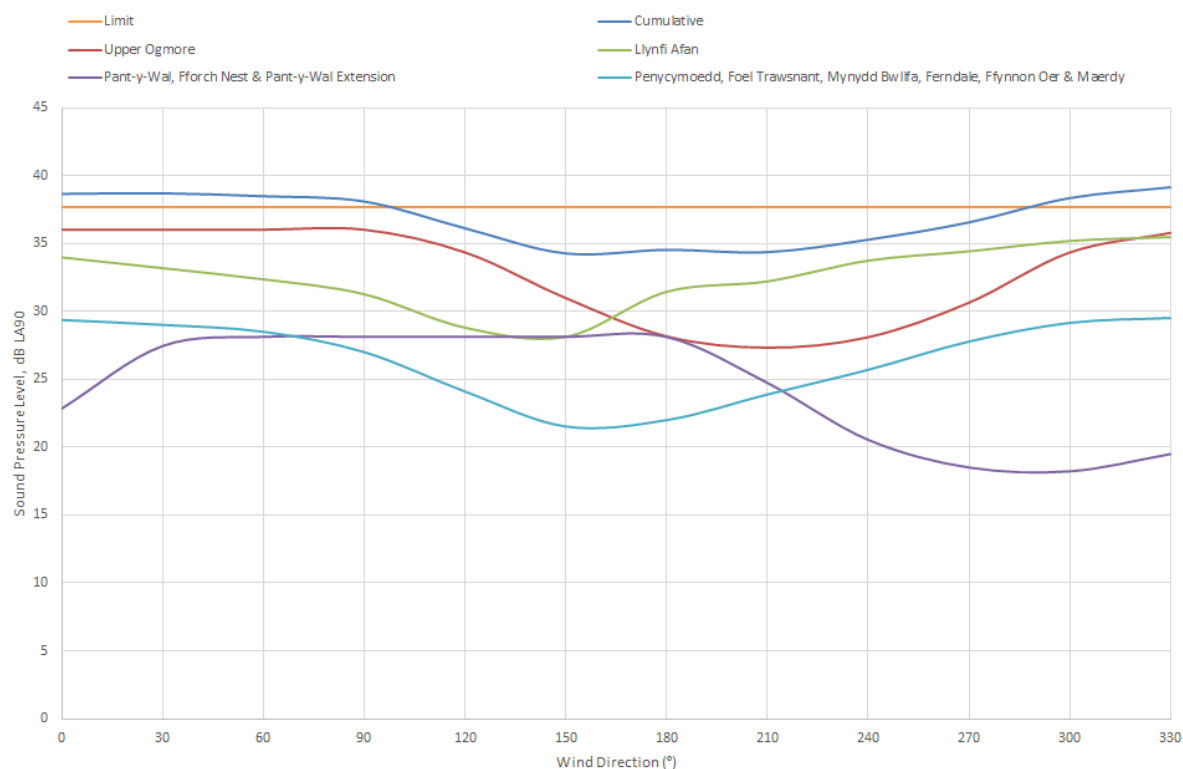


Chart 20: Cumulative Predicted Noise Levels by Direction & Noise Limit during Daytime Periods at H11

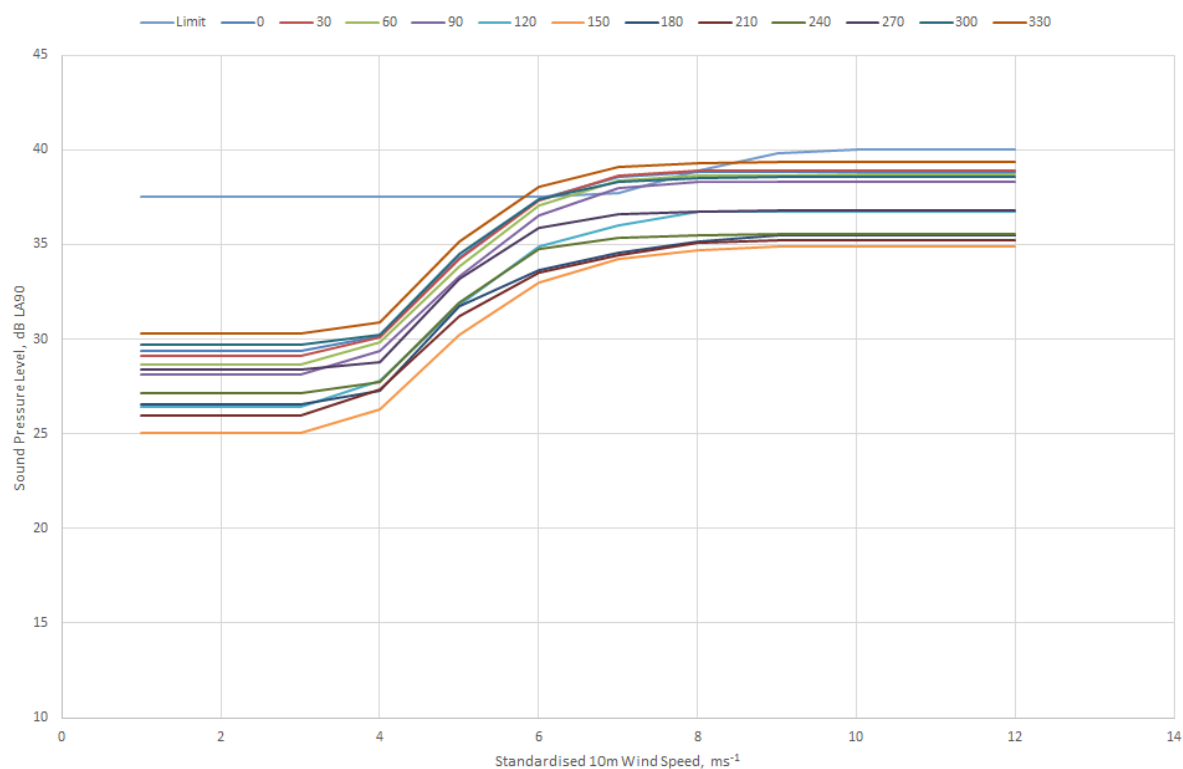


Chart 21: Directional Predicted Noise Level Breakdown during Daytime Periods at 7 ms⁻¹ for H11

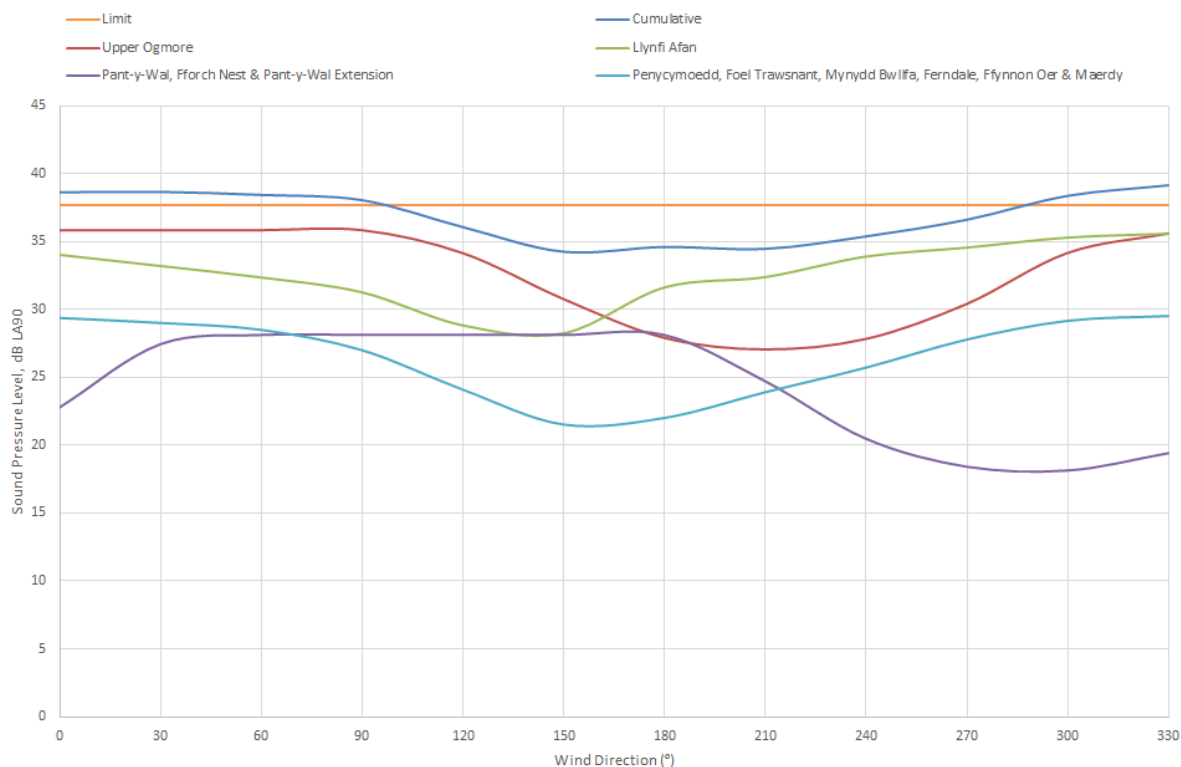


Chart 22: Cumulative Predicted Noise Levels by Direction & Noise Limit during Daytime Periods at H13

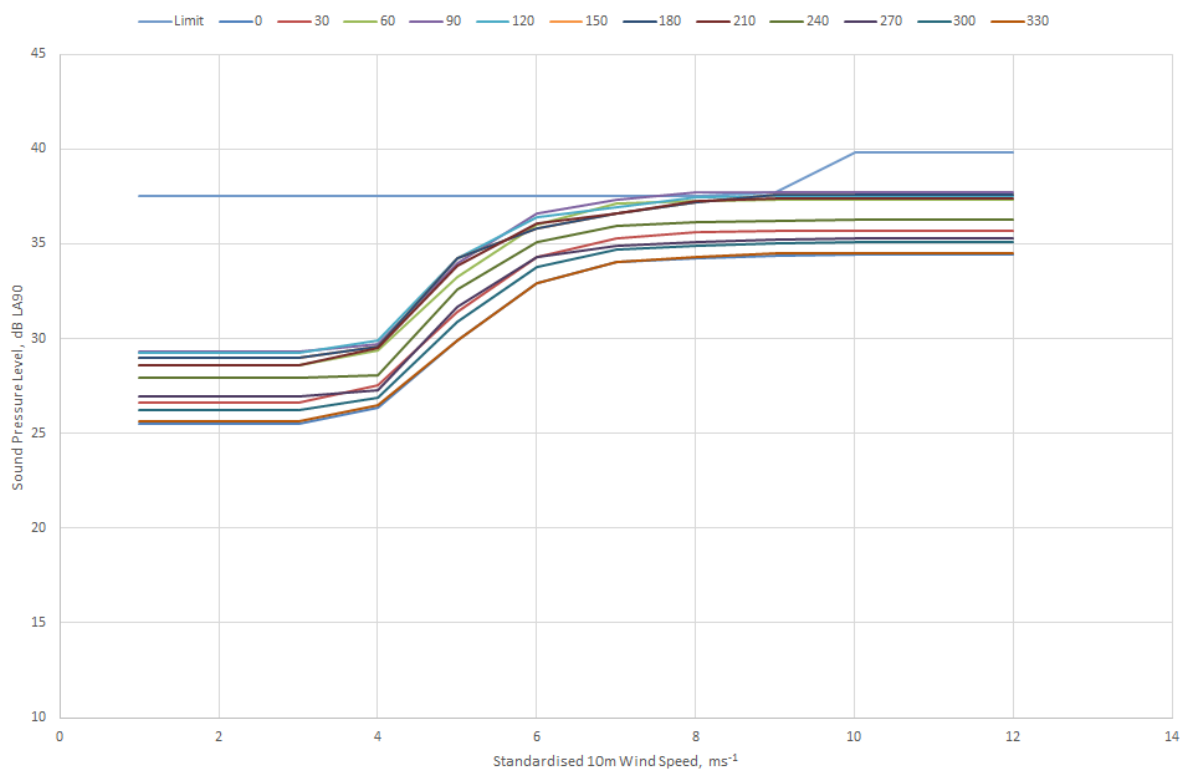


Chart 23: Directional Predicted Noise Level Breakdown during Daytime Periods at 8 ms⁻¹ for H13

