



UPPER OGMORE WIND FARM

FIGURE 5.3a

Zone of Theoretical Visibility to Turbine Tip Height

© CROWN COPYRIGHT, ALL RIGHTS RESERVED.
2018 LICENCE NUMBER 0100031673.

- Site boundary
- Turbine location
- 5km intervals from outermost turbines
- 15km from outermost turbines
- Viewpoint location

Theoretical turbine visibility

- 1-3 Turbines are visible
- 4-5 Turbines are visible
- 6-7 Turbines are visible

Notes

The ZTV is calculated to turbine tip height (130m and 149.9m) from a viewing height of 2m above ground level. The terrain model assumes bare ground and is derived from OS Terrain 50 height data (obtained from Ordnance Survey in July 2017). Earth curvature and atmospheric refraction have been taken into account. The ZTV was calculated using ArcMap 10.4.1 software.

Source: RES, LUC



LAYOUT DWG
6822-5.3a

T-LAYOUT NO.
PWALuog033

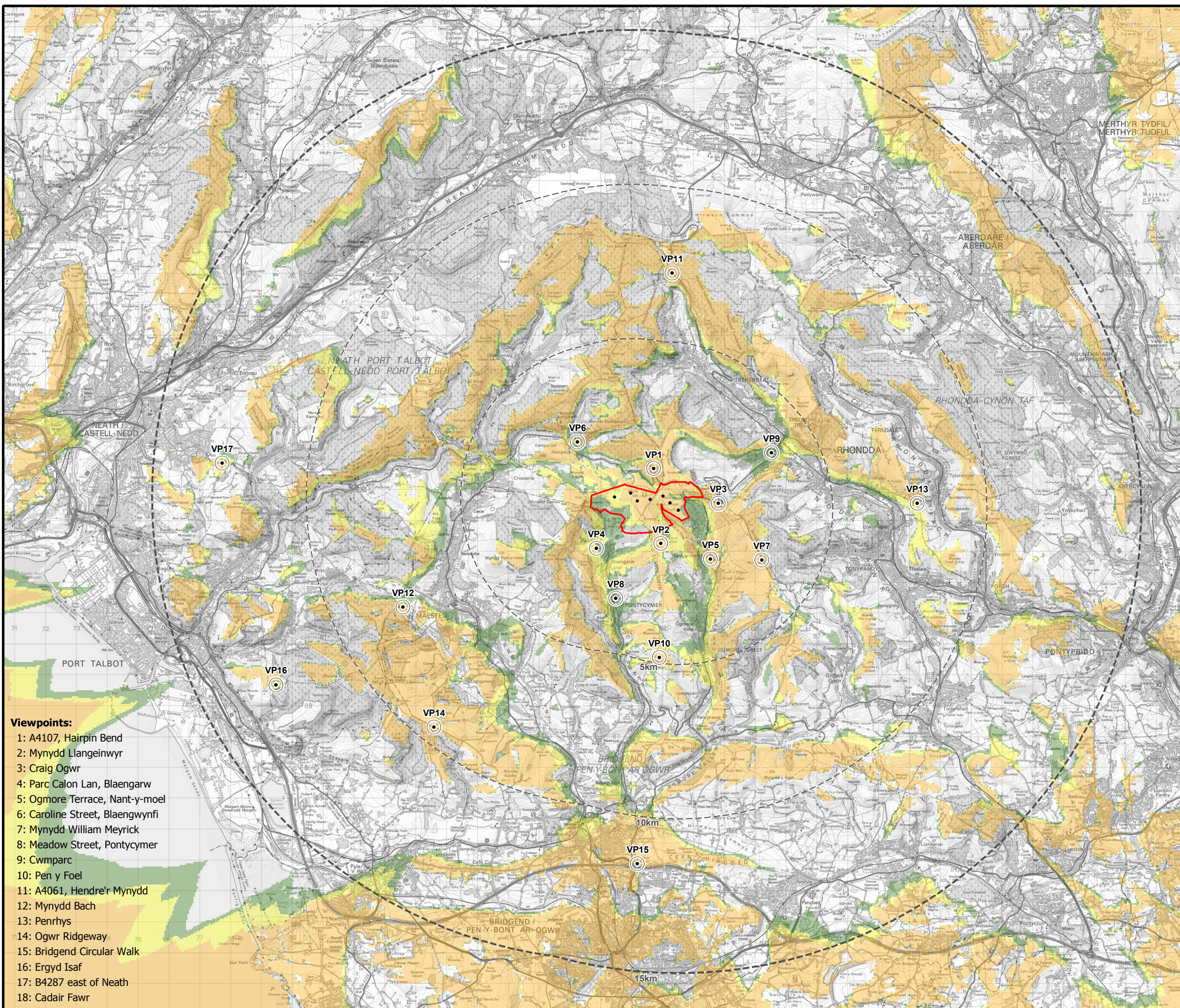
DRAWING NUMBER
FIG5-3a_6822_r1_ZTVtip_A3L
CB:EL EB:lendak_e 24/09/2018

LUC

SCALE - 1:120,000 @ A3

LANDSCAPE AND VISUAL IMPACT ASSESSMENT

THIS DRAWING IS THE PROPERTY OF RENEWABLE ENERGY
SYSTEMS LTD. AND NO REPRODUCTION MAY BE MADE IN
WHOLE OR IN PART WITHOUT PERMISSION



- Viewpoints:**
- 1: A4107, Hairpin Bend
 - 2: Mynydd Llangeinwyr
 - 3: Craig Ogwr
 - 4: Parc Calon Lan, Blaengarw
 - 5: Ogmere Terrace, Nant-y-moel
 - 6: Caroline Street, Blaengwynfi
 - 7: Mynydd William Meyrick
 - 8: Meadow Street, Pontycymer
 - 9: Cwmparc
 - 10: Pen y Foel
 - 11: A4061, Hendre'r Mynydd
 - 12: Mynydd Bach
 - 13: Penrhys
 - 14: Ogwr Ridgeway
 - 15: Bridgend Circular Walk
 - 16: Ergyd Isaf
 - 17: B4287 east of Neath
 - 18: Cadair Fawr