



UPPER OGMORE WIND FARM

FIGURE 5.17 Viewpoint 6 Caroline Street, Blaengwynfi

© CROWN COPYRIGHT, ALL RIGHTS RESERVED.
2018 LICENCE NUMBER 0100031673.

- Site boundary
- Turbine location
- Viewpoint location
- Horizontal field of view: 53.5°



Viewpoint Location

OS Reference:	289242, 196548
AOD at viewpoint: (derived from OS Terrain 50)	298m
Distance to nearest turbine:	2.2km

Source: RES, LUC

LAYOUT DWG 6822-	T-LAYOUT NO. PWALuog033
---------------------	----------------------------

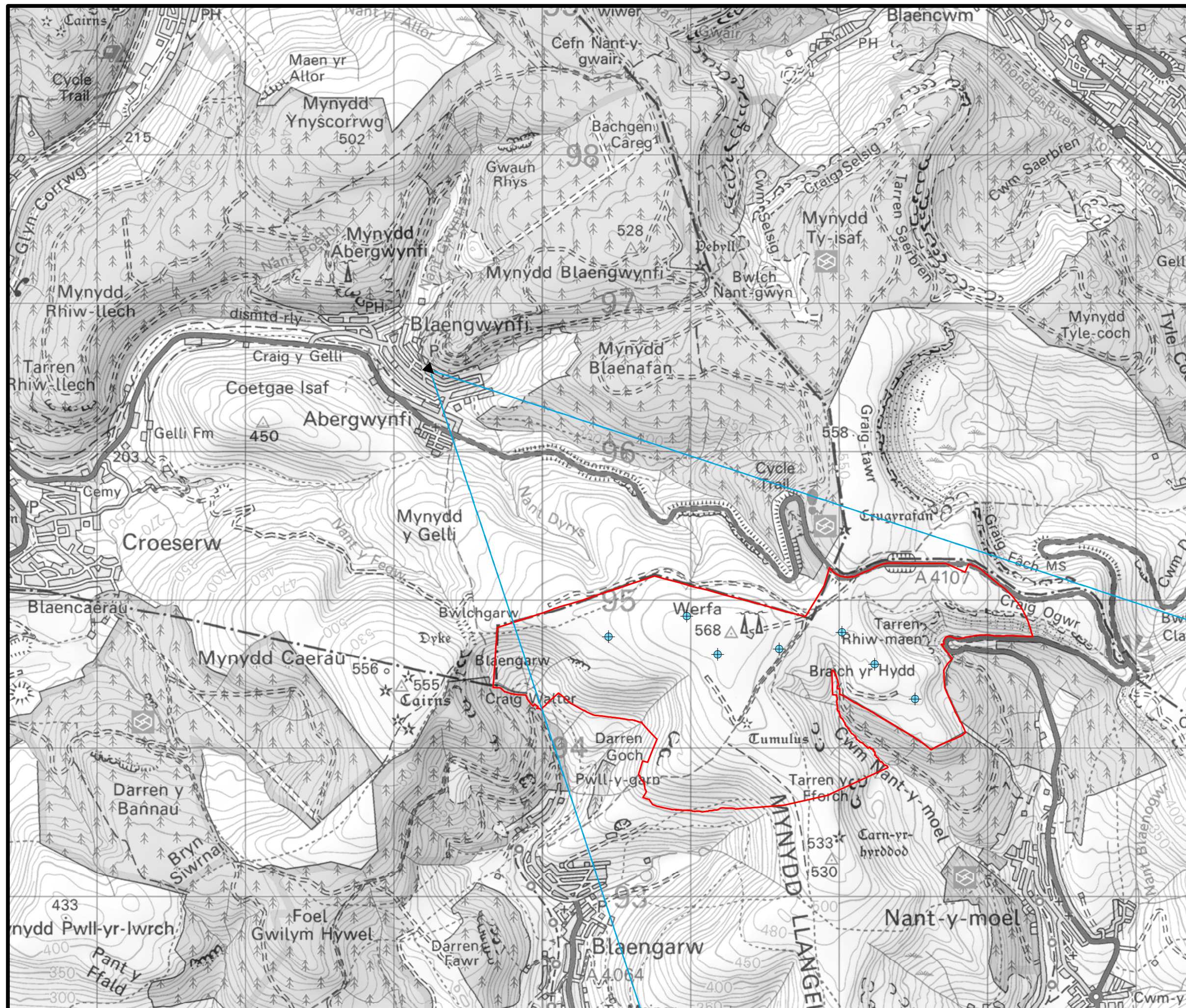
DRAWING NUMBER
LUC EDI FIGX_6822_r2_VPOverviews_A3P 19/10/2018



SCALE - 1:25,000 @ A3

LANDSCAPE AND VISUAL IMPACT ASSESSMENT

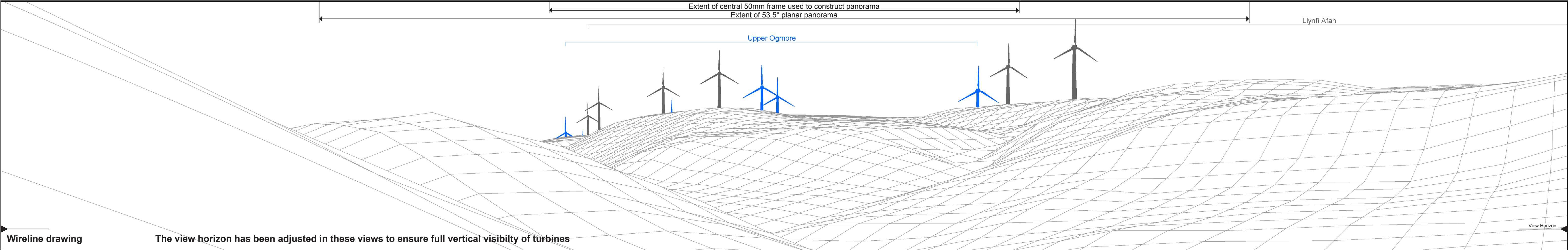
THIS DRAWING IS THE PROPERTY OF RENEWABLE ENERGY
SYSTEMS LTD. AND NO REPRODUCTION MAY BE MADE IN
WHOLE OR IN PART WITHOUT PERMISSION





Baseline photograph

This image provides landscape and visual context only



Wireline drawing

The view horizon has been adjusted in these views to ensure full vertical visibility of turbines

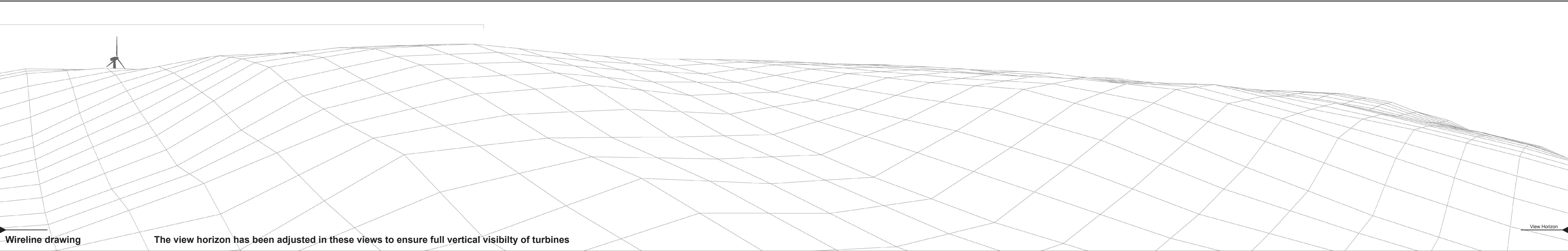
Figure: 5.17.1
Viewpoint 6: Caroline Street, Blaengwynfi

Cumulative Windfarm key (by status):	Proposed scheme	OS reference:	289242 E 196548 N	Horizontal field of view:	90° (cylindrical projection)	Camera:	Nikon D700
	Operational	AOD:	298 m	Principal distance:	522 mm	Lens:	Nikkor 50mm f/1.8D
	Consented	Direction of view:	135°	Paper size:	841 x 297 mm (half A1)	Camera height:	1.5 m AGL
	Application	Nearest turbine:	2.2 km	Correct printed image size:	820 x 260 mm	Date and time:	13/11/2017 12:00



Baseline photograph

This image provides landscape and visual context only



Wireline drawing

The view horizon has been adjusted in these views to ensure full vertical visibility of turbines

Figure: 5.17.2
Viewpoint 6: Caroline Street, Blaengwynfi

Cumulative Windfarm key (by status):	Proposed scheme	OS reference:	289242 E 196548 N	Horizontal field of view:	90° (cylindrical projection)	Camera:	Nikon D700
	Operational	AOD:	298 m	Principal distance:	522 mm	Lens:	Nikkor 50mm f/1.8D
	Consented	Direction of view:	225°	Paper size:	841 x 297 mm (half A1)	Camera height:	1.5 m AGL
	Application	Nearest turbine:	2.2 km	Correct printed image size:	820 x 260 mm	Date and time:	13/11/2017 12:00

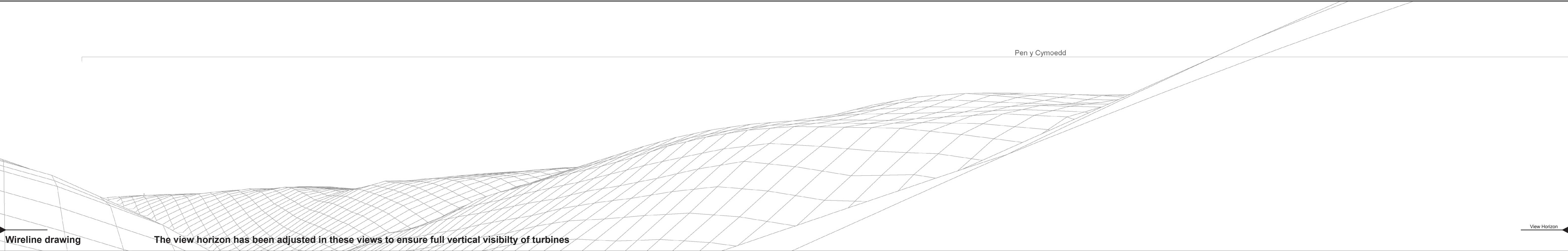
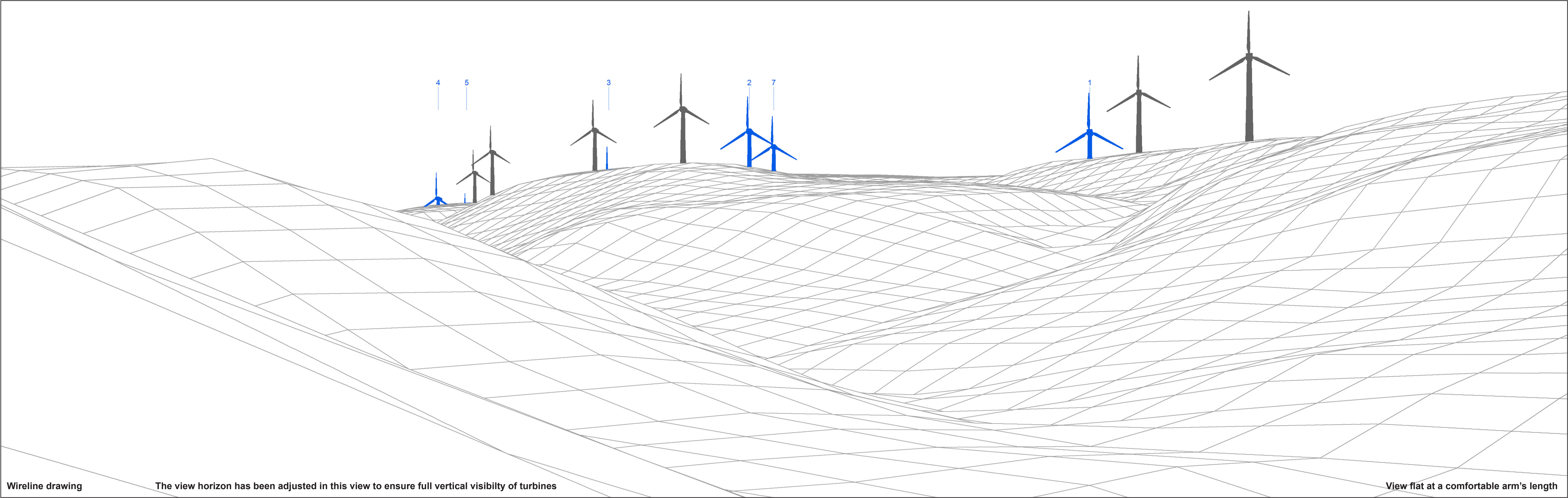


Figure: 5.17.3
Viewpoint 6: Caroline Street, Blaengwynfi

Cumulative Windfarm key (by status):	Proposed scheme	OS reference:	289242 E 196548 N	Horizontal field of view:	90° (cylindrical projection)	Camera:	Nikon D700
	Operational	AOD:	298 m	Principal distance:	522 mm	Lens:	Nikkor 50mm f/1.8D
	Consented	Direction of view:	315°	Paper size:	841 x 297 mm (half A1)	Camera height:	1.5 m AGL
	Application	Nearest turbine:	2.2 km	Correct printed image size:	820 x 260 mm	Date and time:	13/11/2017 12:00



Wireline drawing

The view horizon has been adjusted in this view to ensure full vertical visiblity of turbines

View flat at a comfortable arm's length

Figure: 5.17.4
Viewpoint 6: Caroline Street, Blaengwynfi

OS reference:	289242 E 196548 N	Horizontal field of view:	53.5° (planar projection)	Camera:	Nikon D700
AOD:	298 m	Principal distance:	812.5 mm	Lens:	Nikkor 50mm f/1.8D
Direction of view:	135°	Paper size:	841 x 297 mm (half A1)	Camera height:	1.5 m AGL
Nearest turbine:	2.2 km	Correct printed image size:	820 x 260 mm	Date and time:	13/11/2017 12:00



Photomontage

The view horizon has been adjusted in this view to ensure full vertical visiblty of turbines

View flat at a comfortable arm's length

Figure: 5.17.5
Viewpoint 6: Caroline Street, Blaengwynfi

OS reference:	289242 E 196548 N	Horizontal field of view:	53.5° (planar projection)	Camera:	Nikon D700
AOD:	298 m	Principal distance:	812.5 mm	Lens:	Nikkor 50mm f/1.8D
Direction of view:	135°	Paper size:	841 x 297 mm (half A1)	Camera height:	1.5 m AGL
Nearest turbine:	2.2 km	Correct printed image size:	820 x 260 mm	Date and time:	13/11/2017 12:00