



UPPER OGMORE WIND FARM

FIGURE 5.18 Viewpoint 7 Mynydd William Meyrick

© CROWN COPYRIGHT, ALL RIGHTS RESERVED.
2018 LICENCE NUMBER 0100031673.

- Site boundary
- Turbine location
- Viewpoint location
- Horizontal field of view: 53.5°



Viewpoint Location

OS Reference: 295215, 192726

AOD at viewpoint:
(derived from OS Terrain 50) 515m

Distance to nearest turbine: 3.1km

Source: RES, LUC

LAYOUT DWG: 6822- T-LAYOUT NO. PWALuog033

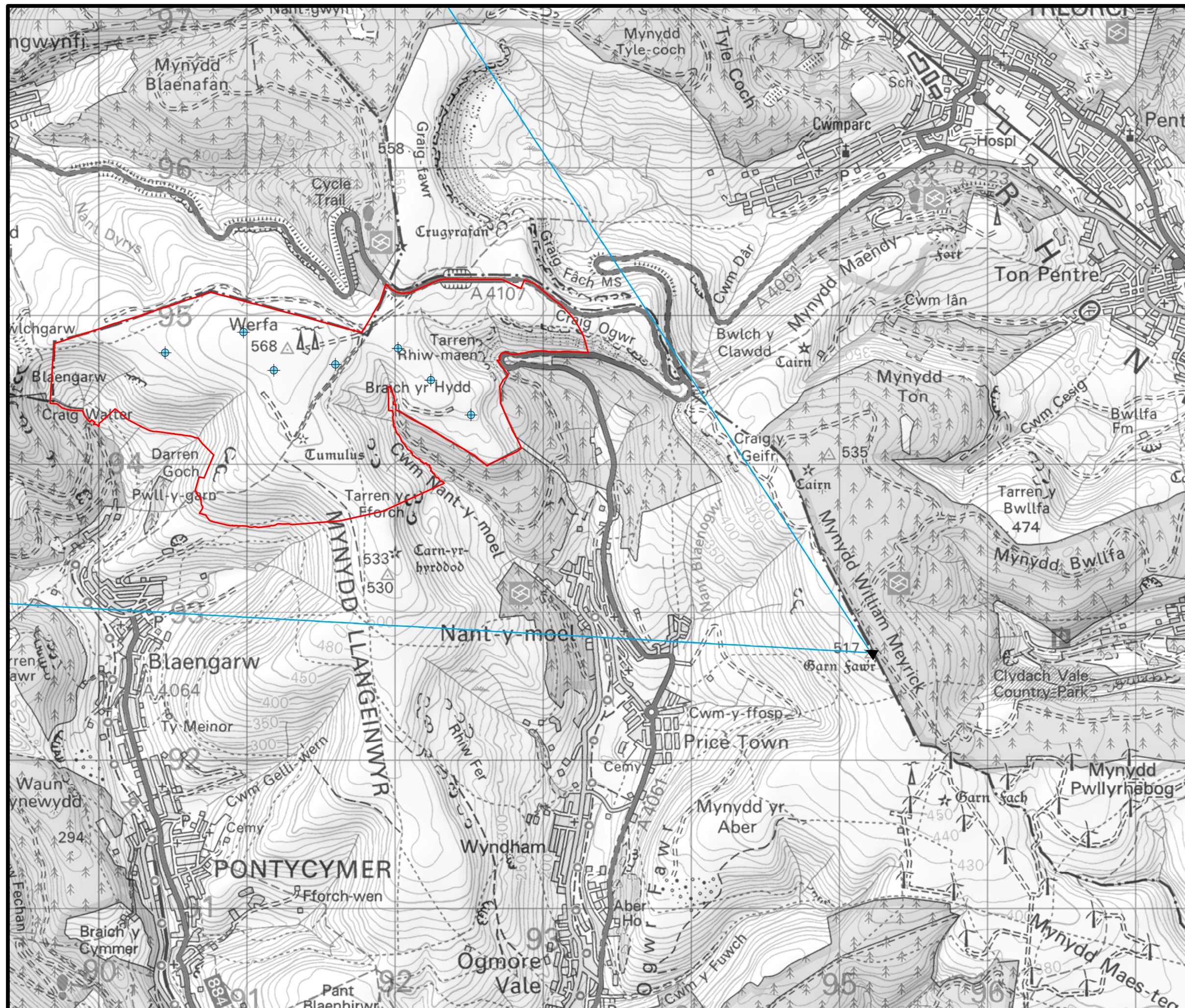
DRAWING NUMBER
LUC EDI FIGX_6822_r2_VPOverviews_A3P 19/10/2018



SCALE - 1:25,000 @ A3

LANDSCAPE AND VISUAL IMPACT ASSESSMENT

THIS DRAWING IS THE PROPERTY OF RENEWABLE ENERGY
SYSTEMS LTD. AND NO REPRODUCTION MAY BE MADE IN
WHOLE OR IN PART WITHOUT PERMISSION



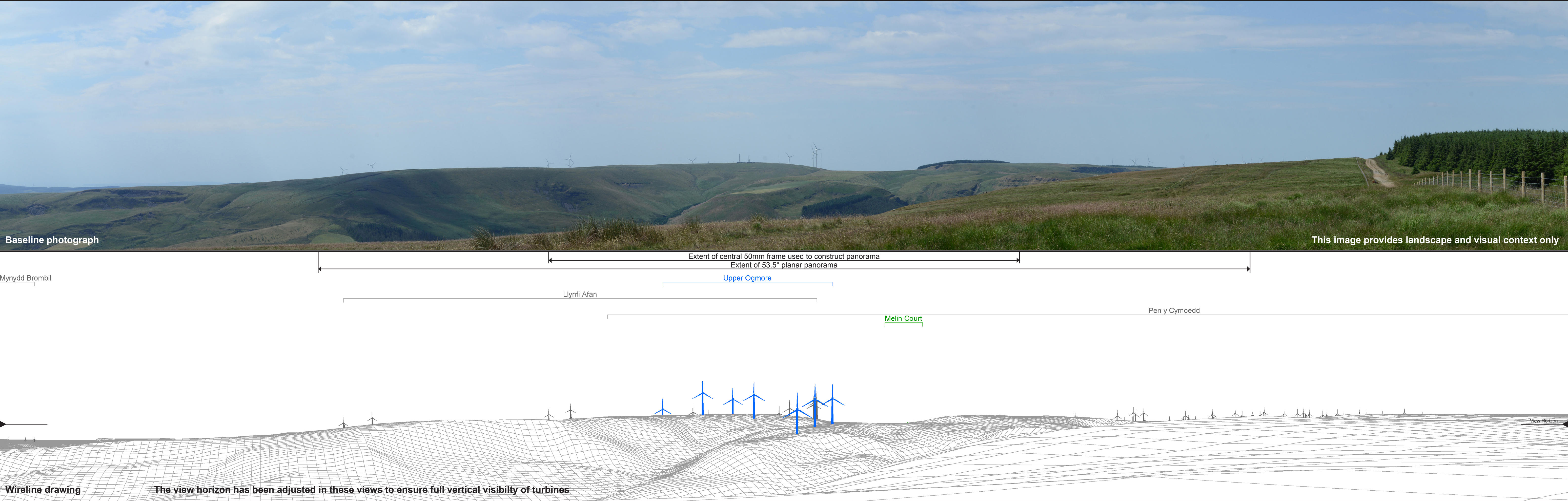


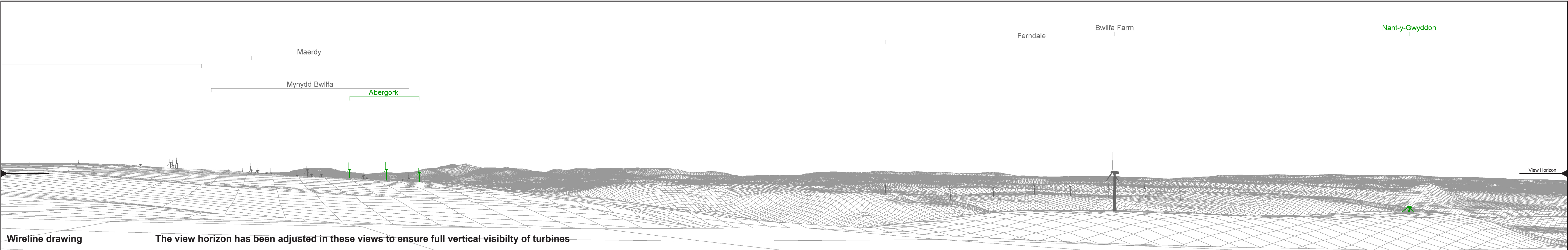
Figure: 5.18.1
Viewpoint 7: Mynydd William Meyrick

Cumulative Windfarm key (by status):	Proposed scheme	OS reference:	295215 E 192726 N	Horizontal field of view:	90° (cylindrical projection)	Camera:	Nikon D600
	Operational	AOD:	515 m	Principal distance:	522 mm	Lens:	Nikkor 50mm f/1.8D
	Consented	Direction of view:	300°	Paper size:	841 x 297 mm (half A1)	Camera height:	1.5 m AGL
	Application	Nearest turbine:	3.1 km	Correct printed image size:	820 x 260 mm	Date and time:	03/07/2018 13:25



Baseline photograph

This image provides landscape and visual context only



Wireline drawing

The view horizon has been adjusted in these views to ensure full vertical visibility of turbines

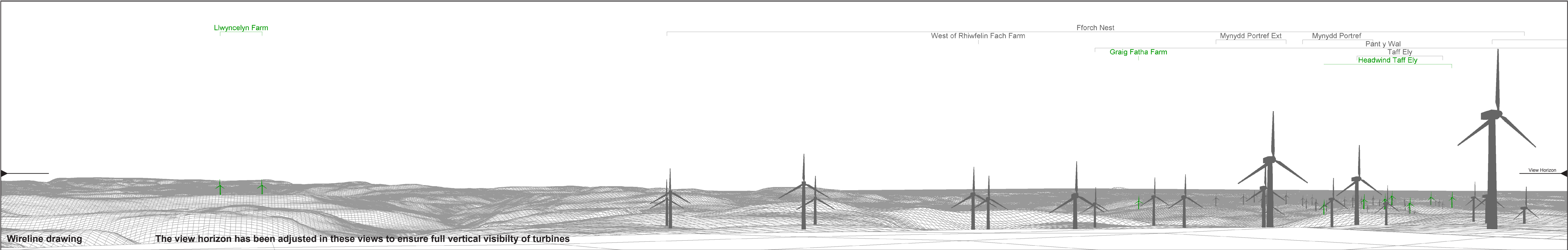
Figure: 5.18.2
Viewpoint 7: Mynydd William Meyrick

Cumulative Windfarm key (by status):	Proposed scheme	OS reference:	295215 E 192726 N	Horizontal field of view:	90° (cylindrical projection)	Camera:	Nikon D600
	Operational	AOD:	515 m	Principal distance:	522 mm	Lens:	Nikkor 50mm f/1.8D
	Consented	Direction of view:	30°	Paper size:	841 x 297 mm (half A1)	Camera height:	1.5 m AGL
	Application	Nearest turbine:	3.1 km	Correct printed image size:	820 x 260 mm	Date and time:	03/07/2018 13:25



Baseline photograph

This image provides landscape and visual context only



Wireline drawing

The view horizon has been adjusted in these views to ensure full vertical visibility of turbines

Figure: 5.18.3
Viewpoint 7: Mynydd William Meyrick

Cumulative Windfarm key (by status):	Proposed scheme	OS reference:	295215 E 192726 N	Horizontal field of view:	90° (cylindrical projection)	Camera:	Nikon D600
	Operational	AOD:	515 m	Principal distance:	522 mm	Lens:	Nikkor 50mm f/1.8D
	Consented	Direction of view:	120°	Paper size:	841 x 297 mm (half A1)	Camera height:	1.5 m AGL
	Application	Nearest turbine:	3.1 km	Correct printed image size:	820 x 260 mm	Date and time:	03/07/2018 13:25

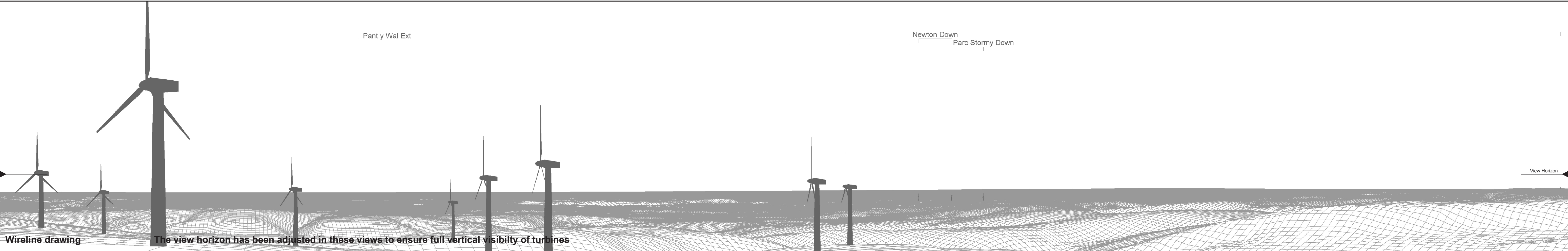


Figure: 5.18.4
Viewpoint 7: Mynydd William Meyrick

Cumulative Windfarm key (by status):	Proposed scheme	OS reference:	295215 E 192726 N	Horizontal field of view:	90° (cylindrical projection)	Camera:	Nikon D600
	Operational	AOD:	515 m	Principal distance:	522 mm	Lens:	Nikkor 50mm f/1.8D
	Consented	Direction of view:	210°	Paper size:	841 x 297 mm (half A1)	Camera height:	1.5 m AGL
	Application	Nearest turbine:	3.1 km	Correct printed image size:	820 x 260 mm	Date and time:	03/07/2018 13:25

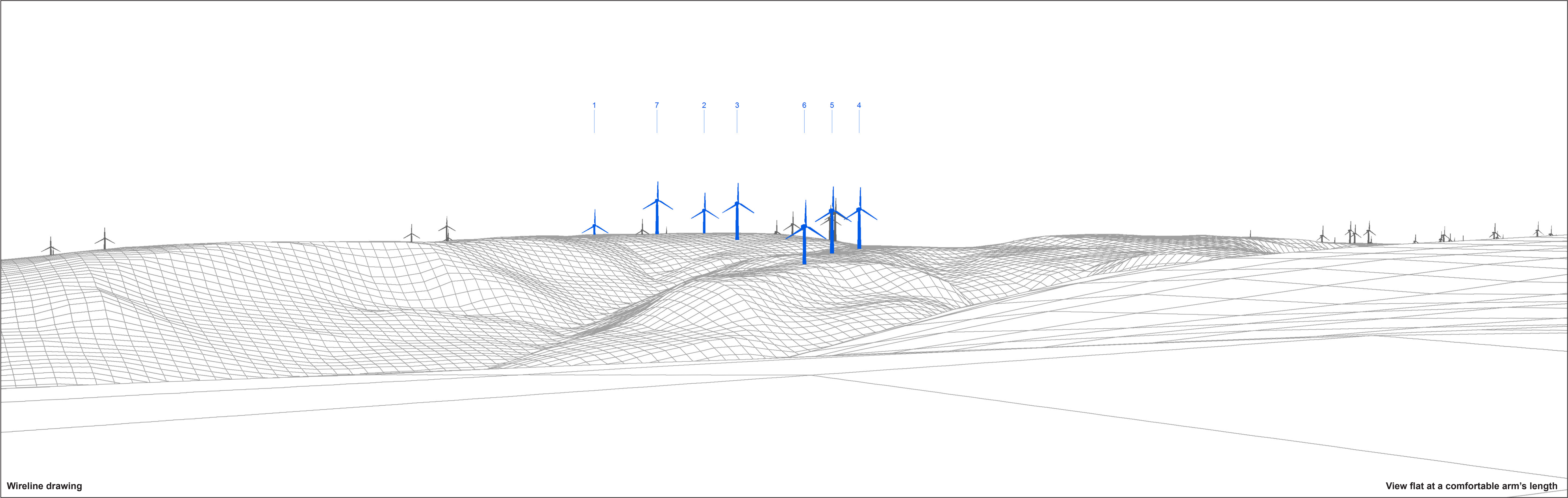


Figure: 5.18.5
Viewpoint 7: Mynydd William Meyrick

OS reference:	295215 E 192726 N	Horizontal field of view:	53.5° (planar projection)	Camera:	Nikon D600
AOD:	515 m	Principal distance:	812.5 mm	Lens:	Nikkor 50mm f/1.8D
Direction of view:	300°	Paper size:	841 x 297 mm (half A1)	Camera height:	1.5 m AGL
Nearest turbine:	3.1 km	Correct printed image size:	820 x 260 mm	Date and time:	03/07/2018 13:25



Photomontage

View flat at a comfortable arm's length

Figure: 5.18.6
Viewpoint 7: Mynydd William Meyrick

OS reference:	295215 E 192726 N	Horizontal field of view:	53.5° (planar projection)	Camera:	Nikon D600
AOD:	515 m	Principal distance:	812.5 mm	Lens:	Nikkor 50mm f/1.8D
Direction of view:	300°	Paper size:	841 x 297 mm (half A1)	Camera height:	1.5 m AGL
Nearest turbine:	3.1 km	Correct printed image size:	820 x 260 mm	Date and time:	03/07/2018 13:25