

## UPPER OGMORE WIND FARM

**FIGURE 5.19**  
**Viewpoint 8**  
**Pontycymer football**  
**field**

© CROWN COPYRIGHT, ALL RIGHTS RESERVED.  
2018 LICENCE NUMBER 0100031673.

- Site boundary
- Turbine location
- Viewpoint location
- Horizontal field of view: 53.5°



### Viewpoint Location

OS Reference: 290481, 191472

AOD at viewpoint:  
(derived from OS Terrain 50) 168m

Distance to nearest turbine: 3.2km

Source: RES, LUC

LAYOUT DWG 6822- T-LAYOUT NO. PWALuog033

DRAWING NUMBER  
LUC EDI FIGX\_6822\_r2\_VPOverviews\_A3P 19/10/2018



SCALE - 1:25,000 @ A3

### LANDSCAPE AND VISUAL IMPACT ASSESSMENT

THIS DRAWING IS THE PROPERTY OF RENEWABLE ENERGY  
SYSTEMS LTD. AND NO REPRODUCTION MAY BE MADE IN  
WHOLE OR IN PART WITHOUT PERMISSION



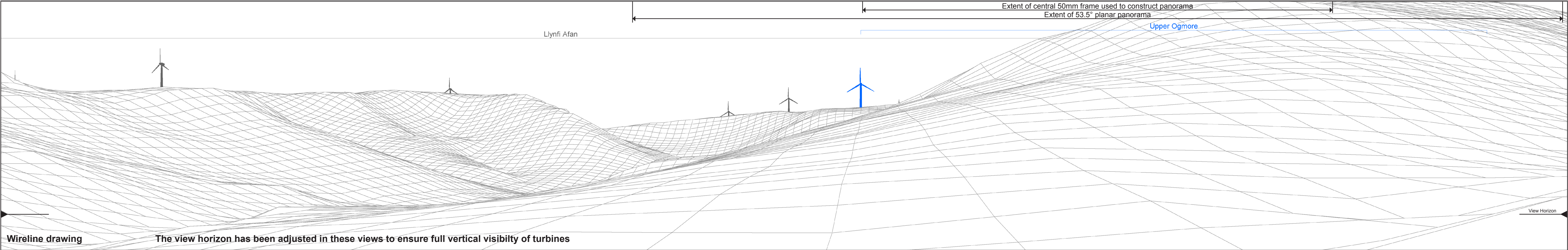
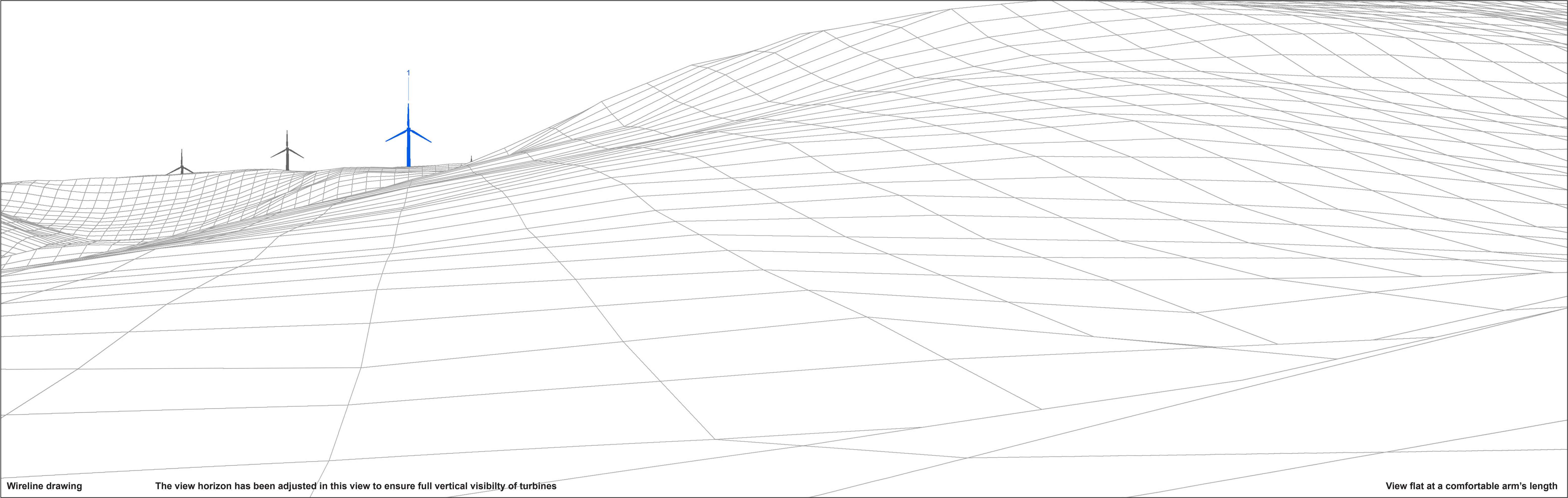


Figure: 5.19.1  
Viewpoint 8: Meadow Street, Pontycymer

Cumulative Windfarm key (by status):	Proposed scheme	OS reference:	290481 E 191472 N	Horizontal field of view:	90° (cylindrical projection)	Camera:	Nikon D700
	Operational	AOD:	168 m	Principal distance:	522 mm	Lens:	Nikkor 50mm f/1.8D
	Consented	Direction of view:	355°	Paper size:	841 x 297 mm (half A1)	Camera height:	1.5 m AGL
	Application	Nearest turbine:	3.2 km	Correct printed image size:	820 x 260 mm	Date and time:	13/11/2017 09:55





**Figure: 5.19.2**  
**Viewpoint 8: Meadow Street, Pontycymer**

OS reference:	290481 E 191472 N	Horizontal field of view:	53.5° (planar projection)	Camera:	Nikon D700
AOD:	168 m	Principal distance:	812.5 mm	Lens:	Nikkor 50mm f/1.8D
Direction of view:	13°	Paper size:	841 x 297 mm (half A1)	Camera height:	1.5 m AGL
Nearest turbine:	3.2 km	Correct printed image size:	820 x 260 mm	Date and time:	13/11/2017 09:55





Photomontage

The view horizon has been adjusted in this view to ensure full vertical visibility of turbines

View flat at a comfortable arm's length

**Figure: 5.19.3**  
**Viewpoint 8: Meadow Street, Pontycymer**

OS reference:	290481 E 191472 N	Horizontal field of view:	53.5° (planar projection)	Camera:	Nikon D700
AOD:	168 m	Principal distance:	812.5 mm	Lens:	Nikkor 50mm f/1.8D
Direction of view:	13°	Paper size:	841 x 297 mm (half A1)	Camera height:	1.5 m AGL
Nearest turbine:	3.2 km	Correct printed image size:	820 x 260 mm	Date and time:	13/11/2017 09:55