



UPPER OGMORE WIND & STORAGE

About the project

RES is currently consulting on its plans for a proposed wind farm & energy storage project located within the county boundary of Bridgend, neighbouring the boundaries of Neath Port Talbot and Rhondda Cynon Taf.

Over the previous few months we have continued to refine the design of the wind farm based on your feedback and further environmental information. RES is now proposing a seven turbine wind farm at Upper Ogmore, revised down from eight, and it is anticipated that the site could be capable of generating approximately 25 megawatts (MW) of clean, green and renewable electricity – enough to power approximately 21,000 homes*.

Our plans at Upper Ogmore also include an energy storage facility. We are currently undertaking further site survey work and will continue to engage and consult with the relevant statutory bodies, organisations and local community on the proposal.

Submission of the planning application is scheduled later this Autumn.

*The homes equivalent figure has been calculated by taking the predicted annual electricity generation of the site (based on RES studies Upper Ogmore has a predicted capacity factor of approximately 40%) and dividing this by the annual average electricity consumption figures from the Department for Business, Energy & Industrial Strategy 2018 (3,781 kWh)







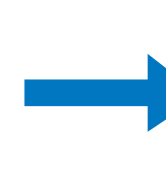
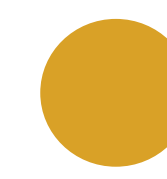
Panoramic View of RES' Garreg Lwyd Wind Farm, Powys (image is being used for illustrative purposes)

www.upperogmore-windfarm.co.uk

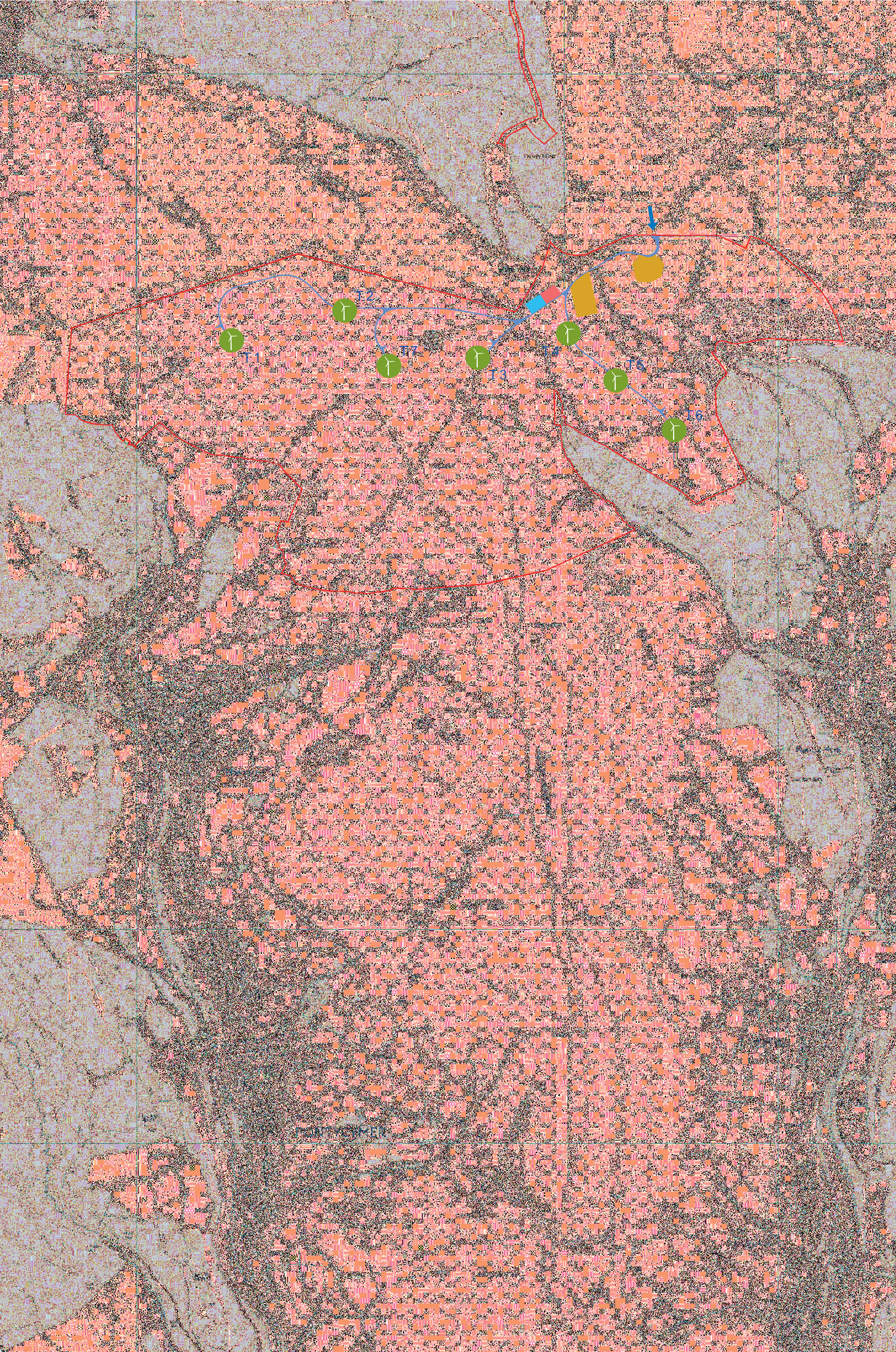
Site Layout

The map below shows the location of the Upper Ogmore Wind Farm and layout of the proposed seven turbines and energy storage facility.

RES is currently consulting on this layout and as such it is subject to change.

- | | | |
|---|--|--|
|  Wind turbine |  Control building & substation compound |  Temporary construction compound/permanent energy storage |
|  Planning application boundary |  Site entrance |  Borrow-pits |

© Crown Copyright and Database right 2018 License 0100031673



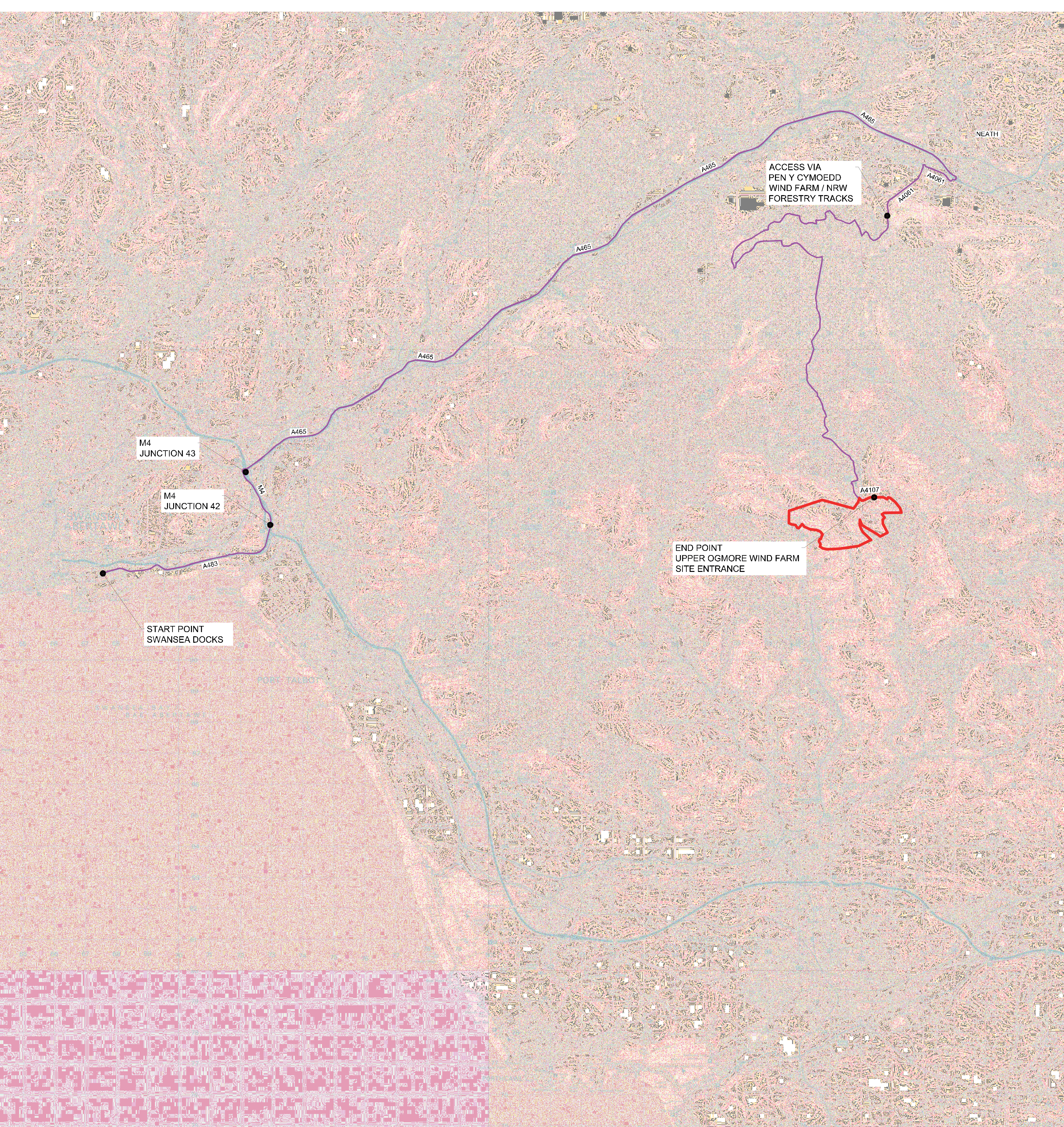
www.upperogmore-windfarm.co.uk

Transport and access

Access is one of the key considerations when selecting a potential wind farm site.

The proposed access route would be from Swansea Docks along the M4 and the A465 to Hirwaun and then south on the A4061 to the recently constructed Penycymoedd Wind Farm. The access route would then follow tracks through that Wind Farm before travelling along a short stretch of the A4107 to the Upper Ogmore site (see image below).

If the wind farm is approved, a detailed Traffic Management Plan will be agreed with the highway authorities and the police. Wherever reasonably practicable we will use stone available on site and source construction materials locally in order to help reduce traffic movements.



www.upperogmore-windfarm.co.uk

Environmental studies

As part of the planning process RES is required to undertake an Environmental Impact Assessment (EIA). The purpose of an EIA is to investigate any significant potential effects of a development on the natural, physical and human environment.

The scope of this assessment work includes plants and animals, soil, water, air, climate, landscape and archaeology, noise and hydrology. The interaction between these factors and the development is examined, their significance assessed and where applicable mitigation measures identified to eliminate or reduce potential effects.

A variety of surveys and assessments have been completed, including ornithology, hydrology, peat, noise, landscape and visual impact and cultural heritage. The results of these surveys will be included in the Environmental Statement which will form part of the planning application when it is submitted. Copies of the Environmental Statement will be made available to read locally as well as on the project website.



Image taken from the proposed Upper Ogmore Wind Farm site

www.upperogmore-windfarm.co.uk



UPPER OGMORE WIND & STORAGE

Commitment to excellence

RES, a UK company, is one of the world's leading independent renewable energy project developers with operations across Europe, the Americas and Asia-Pacific. At the forefront of renewable energy development for over 35 years, RES has developed and/or built more than 16,000MW of renewable energy capacity worldwide. In the UK alone, RES currently has more than 1,000MW of projects either constructed, under construction or consented.

RES is active in a range of renewable energy technologies including both onshore and offshore wind, solar as well as enabling technologies such as energy storage.

Drawing on decades of experience in the renewable energy and construction industries, RES has the expertise to develop, construct and operate projects of outstanding quality. We work closely with communities, local authorities and independent experts to ensure our wind farms are built to the highest standards.

We want to be a good neighbour and will listen to any questions or concerns that you may have and try our best to address them.

Projects in Wales that have been developed, constructed and/or operated by RES.

- 1 Llanbrynmair
 - 2 Mynydd Clogau
 - 3 Garreg Lwyd Hill
 - 4 Rheidol
 - 5 Dyffryn Brodyn
 - 6 Longlands Lane
 - 7 Great House Farm
 - 8 Upper Ogmore
 - 9 Brechfa North
- Under development
- Operational

www.upperogmore-windfarm.co.uk

We believe in meaningful and effective consultation

The aims of our consultation process are to:

- » Engage early and throughout the development process with the local community to facilitate a constructive consultation process to help identify and understand concerns.
- » Assist the local community in understanding the benefits and potential impacts of the proposed wind farm.
- » Add value and improve the quality of our proposal through meaningful and productive consultation.

Before we submit a planning application we will create a Pre-Application Consultation (PAC) Report, that documents the community engagement process and any steps we have taken to adapt our proposal. At this stage we are inviting you to submit comments directly to RES. Once an application is submitted there will be the opportunity to submit representations to the Determining Authority, which for this project is the Planning Inspectorate based in Cardiff. Listening to what the local and wider community have to say about our proposals is an integral part of the consultation process and we welcome your comments and suggestions.

We are keen to understand your views on the proposal and the information available at this exhibition.

Please take a few minutes to fill out a feedback form with your comments.



Photo: Shutterstock image (for illustrative purposes only)

www.upperogmore-windfarm.co.uk

Energy Storage

As a basic concept energy storage enables electricity to be stored and used later when it is needed.

Energy storage is a safe and proven technology and it provides the opportunity to create a more stable and secure electricity system leading to cost benefits for all consumers.

At Upper Ogmore we are proposing to include energy storage capabilities. The energy storage containers will be positioned on-site adjacent to the substation. It is proposed that the facility will help to balance the grid.

240 MW
contracted
globally

80 MW
contracted
in the UK



STORAGE SOLUTION BENEFITS

SYSTEM OPERATION

- » Frequency regulation (EFR, FFR)
- » System balancing and stability
- » Balancing mechanism
- » Managing system power flows
- » Voltage support
- » Blackstart

NETWORKS

- » Network constraint avoidance
- » Reduce network reinforcements
- » Voltage & power quality support
- » Improve network reliability
- » RIIO losses management

ENERGY USERS AND GENERATORS

- » Revenues from ancillary services
- » Reduce energy costs
- » Reduce DUoS charges
- » Increase supply resilience (UPS)
- » Reduce grid connection costs
- » Capacity Market payments



Broxburn Energy Storage – for illustrative purposes only

www.upperogmore-windfarm.co.uk

Why choose this site?

- » Infrastructure is outside designated ecological areas.
- » Onshore wind is now the cheapest source of electricity generation bar none. This makes onshore wind developments not only beneficial for the environment but also for bill payers*.
- » Opportunities to build on existing infrastructure (e.g. access route through Penycymoedd Wind Farm)
- » It is anticipated that more than £1.9 million would be invested in the local economy through construction and first year of operation. However, we consider this to be a minimum figure and as we progress through the development of this site we are keen to hear from local businesses that have the skills and experience to help deliver this project, if consented.
- » High average wind speed to generate significant contribution towards Wales' renewable electricity targets.

*Electricity Generation Costs, Department for Business, Energy & Industrial Strategy - November 2016



RES developed and constructed Garreg Lwyd Wind Farm, Powys - for illustrative purposes

www.upperogmore-windfarm.co.uk

Common Act

The proposed seven turbine Upper Ogmore Wind Farm is located on rough grazing land, some of which is designated Common Land (green hatched area).

You will see from the plan below that some land will need to be taken out of the common designation (magenta hatched area) to allow the proposed development of four turbines, hardstands and access tracks.

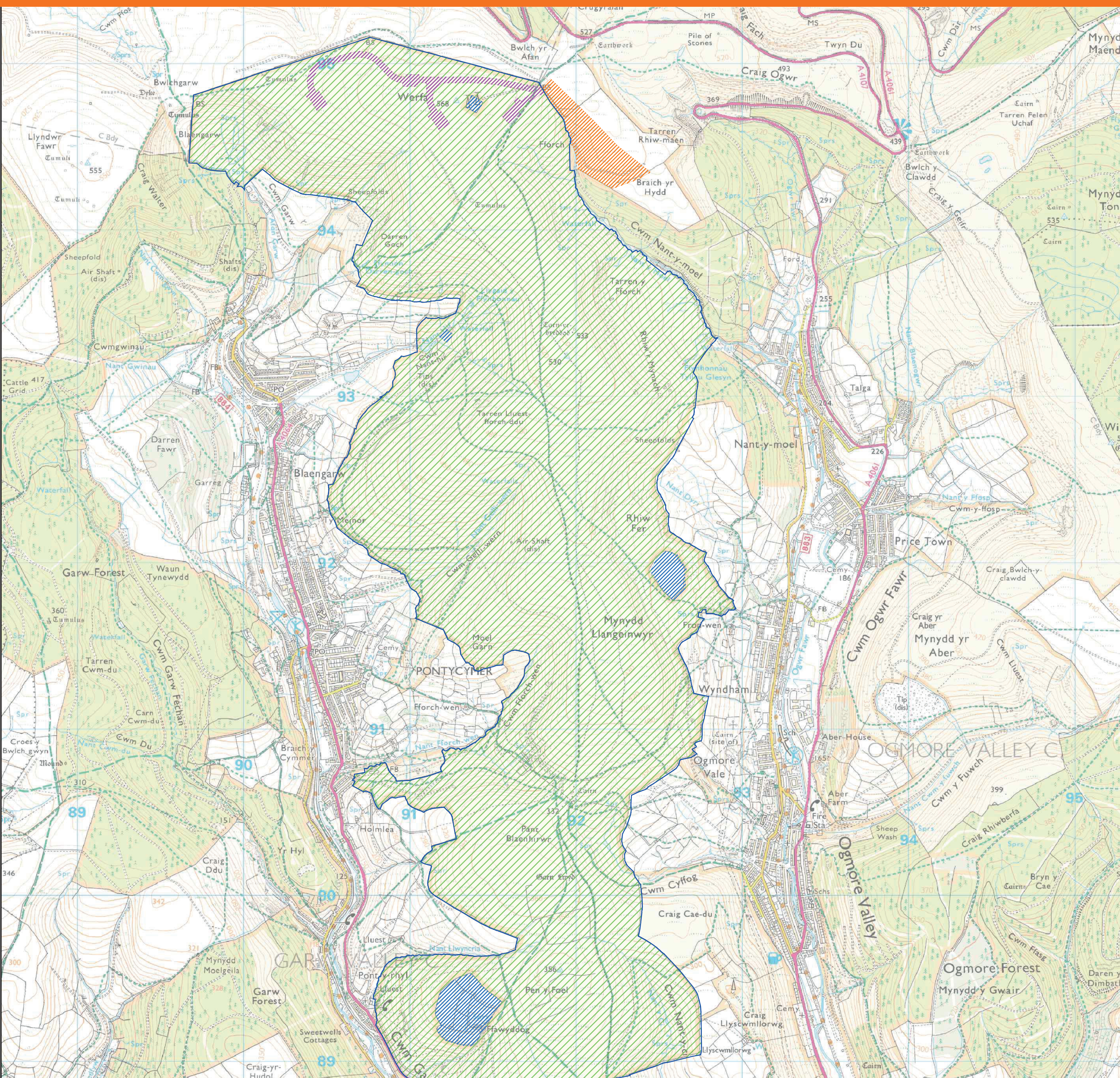
To mitigate the de-registration of common land RES are pleased to say that a larger area of land (within the orange hatched area) is being offered to off-set for this loss and to ensure that the overall amount of common land does not diminish as a result of this project.

We will seek consent for this exchange under s16 Commons Act 2006.

Further to this consent we will also apply for additional consents from Welsh Ministers under Section 38 of the Commons Act 2006 to permit the carrying out of works on the common. Section 38 applications are required for works which are for the management, improvement or protection (or to the negligible detriment) of the common or are otherwise consistent with the traditional uses of the common (e.g. grazing, public recreation).

It is our intention to submit applications under Sections 38 and 16 of the Commons Act 2006 in relation to the development of a wind farm and energy storage project at Upper Ogmore as part of the application for a development of national significance to the Planning Inspectorate Wales later this year. A formal 28 day consultation on the application will take place following submission of the application.

More information with regard to submitting applications can be found at www.planningportal.gov.uk/planning/countryside/commonland/guidance



www.upperogmore-windfarm.co.uk

Common Act

Prior to submitting applications to the planning Inspectorate RES is required to undertake pre application consultation.

The purpose of the consultation, at this stage, is:

- » to inform people living, working or otherwise using the land in the vicinity of the proposed site about our proposals;
- » to provide access to information about the proposed deregistration and subsequent registration in an inclusive way, to all people within the community;
- » to provide an opportunity for people living, working or otherwise using the land in the vicinity of the common to put forward their ideas and have a role in developing proposals where they can have an influence; and
- » to create and deliver a process through which people living, working or otherwise using the land in the vicinity of the proposed site can comment on the formal proposals.

We hope that you will take this opportunity to engage with us regarding our proposals at Upper Ogmores so that we can understand your interests in the Common. In addition, if you have common rights and actively use those rights, but have not been contacted directly by or on behalf of RES, we would like to hear from you.

A wide-angle photograph of a green, grassy field under a clear blue sky. In the distance, there are rolling hills and a small body of water. The foreground is filled with lush green grass, and a dirt path leads towards the horizon.

Image taken from the proposed Upper Ogmores Wind Farm site

www.upperogmore-windfarm.co.uk

Eight to seven turbines

Following the feedback from last November's exhibitions and further environmental and engineering studies, we have refined the layout of the project.

Most notably we have reduced the number of turbines in the project from eight to seven. Reasons for this include:

- » Comments received about the visibility of turbines T3 (moved north) and T6 (reduced in height);
- » New information received on EMI links at the Werfa transmission masts;
- » Further ground investigation, including peat survey;
- » A detailed landscape and visual assessment that allowed us to refine the design from key viewpoints.



www.upperogmore-windfarm.co.uk

RES believes in meaningful and productive consultation with the communities around our developments. We are keen to hear your views on our proposed Upper Ogmores Wind Farm & Energy Storage Project and would appreciate it if you would take a minute to provide us with some feedback.

1. How did you find out about the exhibition?

- ☐ Newsletter through the door
- ☐ Advert in The Glamorgan GEM / Glamorgan Gazette / Rhondda Leader
- ☐ Website: www.upperogmore-windfarm.co.uk
- ☐ Poster _____
- ☐ Other (please specify) _____

2. Before coming to the public exhibition how would you describe your knowledge of the proposed Upper Ogmores Wind Farm & Energy Storage Project?

- ☐ Knew a lot
- ☐ Knew quite a lot
- ☐ Knew a little
- ☐ Knew very little
- ☐ Knew nothing at all

3. Having attended this exhibition, to what extent do you feel we have increased your understanding and knowledge of the proposed Upper Ogmores Wind Farm & Energy Storage Project?

- ☐ A lot
- ☐ Quite a lot
- ☐ A little
- ☐ Very little
- ☐ Not at all

4. What do you think about the proposed transport route for Upper Ogmores Wind Farm & Energy Storage Project?

- ☐ I am happy with the proposed transport route
- ☐ I am neutral towards the proposed transport route
- ☐ I have concerns about the proposed transport route

Access comments: _____



5. Since the previous public exhibitions in November 2017 RES has revised the proposals by removing one turbine. Do you believe that these changes have improved the design of Upper Ogmore Wind Farm and Energy Storage Project?

- ☐ Yes
- ☐ No
- ☐ Don't know

Comments: _____

6. What do you think about the proposed plans for Upper Ogmore Wind Farm & Energy Storage Project?

- ☐ I am happy with the revised proposal
- ☐ I am neutral towards the revised proposal
- ☐ I have concerns about the revised proposal
- ☐ I don't like wind farms in general

7. Additional Comments:

If you would like to be kept informed about the proposed Upper Ogmore Wind Farm & Energy Storage Project or have left a comment that you would like RES to contact you about, please leave your details here:

Name: _____

Email: _____

Address: _____

In accordance with the Data Protection Act 1998, information provided to RES on this questionnaire will not be shared with third party organisations.

Thank you for taking the time to fill out this questionnaire. Your feedback is important to us.



A+ A A-

RES is committed to consultation with local people and stakeholders throughout a project's development. Consultation allows an informed debate that helps us identify issues of concern, explore potential solutions, and design a low impact project that can be welcomed as a positive asset by the local community.

Two sets of public exhibitions for Upper Ogmere have been held. The exhibition boards from the previous exhibition can be found below:

Our photomontages were as shown. These give a visual representation of what the wind farm could look like from various locations. These can also be found below:

13laer.gwynfi

Nantymcel

Cymhareb

Hlaeng garw

RES has set up a Community Liaison Group (CLG), which is made up of representatives from the local community around the wind farm. We have invited representatives from Gomersley Valley Community Council, Garw Valley Community Council as well as local ward councillors to join the group. The first meeting was held on 28th February 2018 and details of the meeting can be found in the links below.

Appendix 1 - Terms of Reference

Appendix 2 - Summary of Public Exhibitions

Appendix 3 - Exhibition Invite Letter

Content - umbroobusinessgroup... X

Umbroo Careers Designer X

Upper Ossmore Wind Farm | CIO... X

+

← → ↻ ⓘ Not secure uppergmore.windfarm.co.uk/contact-us/

Appz Managed bookmarks Yammer Home Dev Projects Hive Admin JLEN Projects Travel Finance RES - Global Renew... Glasgow Signl Election Maps Umbroo Budget Tracker Portfolio Tracker AM Sites Comm

[Home](#)

[THE PROJECT](#)

[LOCAL BENEFITS](#)

[DNS APPLICATION](#)

[CONSULTATION](#)

[NEWS](#)

[CONTACT US](#)

Upper Ossmore → CONTACT US

A+ A A-


CONTACT US

We would love to hear from you, if you have any comments or require further information there are a number of ways you can contact us. Please feel free to contact a member of the team using the contact details below.

Cardiff Office
RES Ltd
Cedar House
Greenwood Close
Cardiff Gate Business Park
Cardiff
CF23 8RD [\[map\]](#)


tel: 029 2167 10377

Chris Jackson



Chris is the Senior Development Project Manager for Upper Ossmore Wind Farm. Chris can be contacted by phone on 02920 021074 or by email at chris.jackson@res-group.com

Callum Whiteford



Desktop 8:50 25/09/2020