



# ASIDOHL v2 Assessment

---

Upper Ogmore  
Windfarm



July 2020 | Project Ref 0294A

Project Number: 0029A

File Origin: L:\Jim AC\00294D - Upper Ogmore\ASIDOHL\2020.07.19-  
00294D-Upper-Ogmore-ASIDOHL-Final.docx

Author with date	Reviewer code, with date
JL, 01.09.2018	JA, August 2018
	JM-0049, 19.07.2020

## Contents

### Non-Technical Summary

1.	Stage 1 Contextual Information.....	5
2.	Stage 3 Assessment of Indirect Impact of Development .....	9
3.	Stage 4 Evaluation of Relative Importance .....	24
4.	Stage 5 Assessment of Overall Significance of Impact.....	46

## Figures

Fig. 1	Site Location
Fig. 2	All Historic Landscape Character Areas within 10km of application area
Fig. 3	Historic Landscape Character Areas filtered by bare earth Zone of Theoretical Visibility
Fig. 4	Portions of HLC Areas filtered and clipped to bare earth ZTV in the Rhondda Registered Landscape of Special Historic Interest
Fig. 5	Portions of HLC Areas filtered and clipped to bare earth ZTV in the Margam Mountain Registered Landscape of Special Historic Interest

## Executive Summary

*This Assessment of the Significance of the Impact of Development on Historic Landscape Areas on the Register of Landscapes of Historic Interest in Wales (ASIDOHLv2) has been prepared by Archaeology Collective, on behalf of RES, to inform planning proposals for wind farm development on land at Upper Ogmores, Nant-y-Moel, Bridgend.*

*This report concludes that it is anticipated that should the proposed development receive consent there would be a slight reduction in the overall value of both the Rhondda Landscape of Special Historic Interest and the Margam Mountain Landscape of Special Historic Interest. This is due in the main to only a relatively small proportion of the Historic Landscape Character Areas of each Landscape area being within the ZTV. The report further concludes that this will result in a no more than 'low' reduction of both the Rhondda Landscape of Special Historic Interest and the Margam Mountain Landscape of Special Historic Interest*

*Therefore, this assessment should provide sufficient information to determine a planning application, when it is submitted, and the proposed development is in line with national and local planning policy in regard to provisions relevant to Historic Landscape Areas on the Register of Landscapes of Historic Interest in Wales.*



# 1. Stage 1 Contextual Information

## Project Background

- 1.1** This Assessment of the Significance of the Impact of Development on Historic Landscape Areas on the Register of Landscapes of Historic Interest in Wales (ASIDOHLv2) has been prepared by John Lord BSc MSc MCIfA, Associate Director at Archaeology Collective on behalf of RES Limited. This assessment follows the ASIDOHLv2 assessment methodology, as published by Cadw<sup>1</sup> throughout.
- 1.2** John is an archaeologist and historic landscape specialist with 17 years' professional experience, of which 10 years are as a consultant in commercial practice. He has also worked as a Historic Landscape Characterisation Project Officer on the Lincolnshire and West Yorkshire projects. He holds a bachelor's degree in Archaeological Science with Environmental Science from University of East London, awarded in 1999, and a master's degree in Applied Landscape Archaeology from University of Oxford, awarded in 2004. He has prepared approximately 15 ASIDOHLv2 assessments, in the main for renewable energy developments.
- 1.3** The subject of this assessment is the site known as Upper Ogmores, Nant-y-Moel, Bridgend. The area which the application occupies is approximately 8.5ha of a larger c.360ha application area, and is centred at National Grid Reference (NGR) 291545, 194880 hereafter referred to as the 'development area'. The larger application area, identified by a red line within the application documentation is hereafter referred to as 'the application area'. The development area and application area lie to the north of Nant-y-Moel, Bridgend.
- 1.4** This document is being prepared a part of an EIA. Other archaeological heritage matters will be dealt with within a separate Archaeology and Heritage Desk Based Assessment.
- 1.5** The application area (Figure 1) comprises an area of moorland the majority of which is used for pastoral grazing of sheep and cattle. A portion of the application area is occupied by two communications masts and associated infrastructure including access track. A portion of this extant access track will be reused and reconstructed as part of the application scheme. Whilst the application area is not within any Historic Landscape Areas on the Register of Landscapes of Historic Interest in Wales, two such areas lie within 10km of the application area (Figure 2), these being The Rhondda (Y Rhondda) Landscape of Special Historic Interest, the nearest part of

---

<sup>1</sup> Cadw 2007

which lies c.15m to the north, and Margam Mountain (Mynydd Margam) Landscape of Special Historic Interest

**1.6** The proposed development is for three wind turbines with a tip height of 130m (turbines 1, 2 and 6) and four wind turbines with a tip height of 149.9m (turbines 3, 4, 5 and 7) along with associated infrastructure including access tracks, The proposed development also includes works to approximately 3.6km of the existing track through the Mynydd Ty-isaf forest to the north west of the Site to enable it to be used for turbine delivery.

**1.7** As the proposed development is not within any areas on the Historic Landscape Areas on the Register of Landscapes of Historic Interest in Wales, rather lying completely outside of any such areas, this assessment only considers Stage 1 and Stages 3 to 5 of the ASIDOHL methodology. So for the purposes of avoidance of doubt, Stage 2 of the methodology has been omitted as there is no potential for the proposed development to have any direct, physical impact on any area of an entry on the Register. This Introduction represents Stage 1 of the ASIDOHL methodology.

**1.8** The bare earth Zone of Theoretical Visibility has been used to identify those historic landscape character areas (HLCAs) which have entire or partial visibility of the proposed development. All HLCAs which lie completely outside of the ZTV have been discounted from the assessment, on the basis they will not experience any impacts as a result of the proposed development. Table below and Figures 3, 4a and 4b identify those HLCAs which will be considered further within this assessment, with the table also identifying the total area of each HLCA, expressed in hectares, the total area of each HLCA within the ZTV and therefore containing visibility of any part of the proposed development, again expressed in hectares, and finally the percentage of each HLCA within the ZTV.

**Table 1: Historic Landscape Character Areas visible from proposals and areas affected based on bare earth ZTV**

HLCA Number	HLCA Name	Total Area of HLCA (ha)	Area of HLCA within ZTV (ha)	Percentage of area of HLCA within ZTV
<b>Rhondda (Y Rhondda) Landscape of Special Historic Interest</b>				
<b>HLCA030</b>	Rhondda Uplands	2717.15ha	950.15ha	35%
<b>HLCA029</b>	Rhondda Fawr: Enclosed Valley Sides	1126.55ha	72.20ha	6.4%
<b>HLCA034</b>	Rhondda Fawr: Enclosed Valley Sides (Mynydd Penygraig)	1243.05ha	45.90ha	3.7%
<b>HLCA032</b>	Parc Cwm Brychinog	444.45ha	34.94ha	7.9%
<b>HLCA023</b>	Rhondda fach: Eastern closed Valley Sides	656.00ha	114.79ha	17.5%
<b>HLCA025</b>	Mynachdy Penrhys	152.19ha	0.73ha	0.5%
<b>HLCA024</b>	Rhondda Fach: Western Enclosed Valley Sides	198.41ha	12.49ha	6.3%
<b>Margam Mountain (Mynydd Margam) Landscape of Special Historic Interest</b>				
<b>HLCA013</b>	Upper Cwm Kenfin	95.78ha	78.00ha	81.4%
<b>HLCA010</b>	Mynydd Margam	1640.88ha	393.84ha	24%
<b>HLCA005</b>	Llangynwyd	704.94ha	337.43ha	47.9%
<b>HLCA011</b>	Waun-y-Gilfach	26.97ha	24.61ha	91.2%
<b>HLCA012</b>	Nant y Gadlys	54.44ha	13.29ha	24.4%
<b>HLCA014</b>	Moel Ton Mawr	51.83ha	34.58ha	66.7%

**1.9** For the avoidance of doubt, Table 2 below identifies those HLCA's which lie entirely outside of the ZTV, and consequently will in no way be affected by the proposed development.

**Table 2: Historic Landscape Character Areas lying entirely outside the bare earth ZTV**

HLCA Number	HLCA Name
<b>Rhondda (Y Rhondda) Landscape of Special Historic Interest</b>	
<b>HLCA022</b>	Ffaldau
<b>HLCA021</b>	Maerdy
<b>HLCA015</b>	Blaenrhondda
<b>HLCA014</b>	Ty-Newydd
<b>HLCA016</b>	Blaenycwm
<b>HLCA013</b>	Treherbert
<b>HLCA012</b>	Cwmparc
<b>HLCA011</b>	Treorchy
<b>HLCA009</b>	Ystrad and Pentre
<b>HLCA010</b>	Ton Pentre and Gelli
<b>HLCA020</b>	Blaenllechau and Ferndale
<b>HLCA019</b>	Pontygwaith, Tylorstown and Stanleytown
<b>HLCA027</b>	Brith-Weunydd and Troed-y-rhiw
<b>HLCA031</b>	Rhondda Uplands (Mynydd Ton - Mynydd Penygraig)
<b>HLCA018</b>	Wattstown
<b>HLCA036</b>	Cilely and Rhiwgarn
<b>HLCA023</b>	Rhondda fach: Eastenclosed Valley Sides
<b>HLCA026</b>	Mynydd Brith-weunydd and Mynydd Troed-y-rhiw



## 2. Stage 3 Assessment of Indirect Impact of Development

### Introduction

- 2.1** As noted above, no part of the application site or proposed development lies within a Registered Historic Landscape of Historic Interest. On that basis, Stage 2 of the ASIDOHLv2 methodology<sup>2</sup> is irrelevant to this assessment
- 2.2** Furthermore, as no part of the proposed development lies within a Registered Historic Landscape of Historic Interest there is no potential for the proposed development to cause indirect physical impacts, as laid out within the published ASIDOHLv2 methodology, to any Historic Character Area. On that basis, part (a) Indirect, physical impacts of Stage 3 of the ASIDOHLv2 methodology is irrelevant to this assessment.
- 2.3** On that basis, this assessment moves directly on to consider part (b) Indirect (non-physical) visual impacts of Stage 3 of the ASIDOHLv2 methodology.

### Rhondda Landscape of Special Historic Interest

#### HLCA030 Rhondda Uplands

- 2.4** The Rhondda Uplands HCLA comprises c.2,717 ha, of which c.950ha are within the bare earth ZTV which is c.35% of the overall area of the HCLA. At its closest point to the application area, the HCLA is c.1.1km north.
- 2.5** A review of the character area description for the HLCA as available on the GGAT website<sup>3</sup> indicated that it contains a variety of archaeological features displaying considerable time depth, with the dominant character of the landscape being that of unimproved, common upland sheepwalk, where coarse grasses and sedge vegetation predominant, a significant proportion of which has been turned over to forestry; large plantations of spruce, fir, and occasional stands of larch. The terrain is characterised by gently sloping bare summits, bordered by craggy cliffs and steep

---

<sup>2</sup> Cadw 2007

<sup>3</sup> [http://www.ggat.org.uk/cadw/historic\\_landscape/](http://www.ggat.org.uk/cadw/historic_landscape/)

wooded slopes. Apart from agriculture, previous land use included quarrying for building stone, notably from the disused Ynys-feio Quarry and trial prospecting for minerals, coal levels. The character area description also notes that the HLCA contains largely buried archaeological evidence from the Mesolithic period through to the modern period. It also notes that the most visible and common prehistoric sites in the area are burial cairns from the Bronze Age, with the HLCA also containing evidence for continuous occupation spanning the Iron Age and Roman periods, including the settlement site at Hen Dre'r Mynydd and the Roman marching camp at Twyn y Briddallt. Later features are noted as including an extensive system of early medieval cross dykes, which demarcate administrative boundaries at this time, and later medieval house platforms. In terms of later features, the character area description is mainly focussed on the extractive works in the HLCA, including flagstone quarries and coal mining, including coal tipping along the ridge above Maerdy.

**2.6** Views from the HLCA towards the proposed development will in all cases contain elements of previously consented and constructed windfarms, some within the HLCA and others outside of it. Whilst these are modern elements in the view of the HLCA, they won't detract from an understanding of the settings of those elements of previous landscapes which are identified within the character area description. The proposed development will not create any inappropriate visual connections between elements not intended to be intervisible, or equally impact on the visual connection between historically linked elements within the HLCA, due to the nature of the development. Whilst the proposed development is unlikely to detract from the understanding of the dominant HLCA character as identified within the character area description as an unimproved, common upland sheepwalk, there remains the possibility that it could experience some limited impact. Therefore, only the broad character area description has been taken forward to the ASIDOHLv2 Stage 3 assessment, shown in the table below.

**Table 3: Indirect impacts on the historic character of the HLCA030 – Rhondda Uplands**

Impacts	Category and Score	Magnitude and Score
Overall impact on HLCA	B – 3	Very Slight – 1
Development Form	3	Very Slight – 1
Development Appearance	3	Very Slight – 1
<b>Magnitude of direct impacts</b>	$(3+1) + (3+1) + (3+1) / 3 \rightarrow 12/3$	<b>Total = 4 Slight Impact</b>

**2.7** Following the ASIDOHLv2 methodology, an overall magnitude of indirect impacts is then derived, which gives a score of 4, which the ASIDOHLv2 methodology equates to a 'slight' impact.

## HLCA30 Rhondda Fawr: Enclosed Valley Sides

- 2.8** The Rhondda Fawr: Enclosed Valley Sides HCLA comprises c.1,126 ha, of which c.72ha are within the bare earth ZTV which is c.6.4% of the overall area of the HCLA. At its closest point to the application area, the HCLA is c.5.8km east.
- 2.9** A review of the character area description for the HLCA as available on the GGAT website<sup>4</sup> indicated that it comprises a palimpsest of surviving archaeological features of considerable time-depth, and variety, indicating development and change of use over the last 12000 years, but being 'a largely relict medieval/post medieval agricultural landscape'. The earliest indications of human settlement of the landscape are the Mesolithic (10000-4400BC) sites at Fforch above Cwmparc, Cefn Glas, and Mynydd Ystradffernol, where flint assemblages and stray finds have been recorded. Similar finds from the area are dated stylistically to the Neolithic (4400-2300BC), including a number of flint arrowheads and other finds often associated with charcoal from Mynydd Ystradffernol and Tarren Pantyffin and the find of a Petit tranchet axehead from the slopes of Mynydd Ynysfelo. Flint processing is also recorded on Mynydd Ty-newydd. The Bronze Age (2300-800BC) is represented by finds of a bronze tanged spearhead with ribbed blade from Blaenrhondda and a cairn field at Blaenrhondda.
- 2.10** The character area description also notes that the HLCA is an extensive industrial landscape with features dating from the early phases of mineral extraction, and also contains significant proportion of the area is modern forestation and that 'several colliery sites, including Bodringallt, Lady Margaret, Nant-dyrys, and Tyle-coch, located within the boundaries of the area impinge on the character of the historic landscape'.
- 2.11** Views from the HCLA towards the proposed development will in all cases contain elements of previously consented and constructed windfarms, some within the HLCA and others outside of it. Whilst these are modern elements in the view of the HLCA, they won't detract from an understanding of the settings of those elements of previous landscapes which are identified within the character area description. The proposed development will not create any inappropriate visual connections between elements not intended to be intervisible, or equally impact on the visual connection between historically linked elements within the HLCA, due to the nature of the development. Whilst the proposed development is unlikely to detract from the understanding of the dominant HLCA character as identified within the character area description as a largely relict medieval/post medieval agricultural landscape, there remains the possibility that it could experience some limited impact. Therefore, only

---

<sup>4</sup> [http://www.ggat.org.uk/cadw/historic\\_landscape/](http://www.ggat.org.uk/cadw/historic_landscape/)

the broad character area description has been taken forward to the ASIDOHLv2 Stage 3 assessment, shown in Table 4 below.

**Table 4: Indirect impacts on the historic character of the HLCA029 – Rhondda Fawr: Enclosed Valley Sides**

Impacts	Category and Score	Magnitude and Score
Overall impact on HLCA	B – 3	Very Slight – 1
Development Form	3	Very Slight – 1
Development Appearance	3	Very Slight – 1
<b>Magnitude of direct impacts</b>	$(3+1) + (3+1) + (3+1) / 3 \rightarrow 12/3$	<b>Total = 4 Slight Impact</b>

- 2.12** Following the ASIDOHLv2 methodology, an overall magnitude of indirect impacts is then derived, which gives a score of 4, which the ASIDOHLv2 methodology equates to a 'slight' impact.

#### HLCA034 Rhondda Fawr: Enclosed Valley Sides (Mynydd Penygraig)

- 2.13** The Rhondda Fawr: Enclosed Valley Sides HCLA comprises c.1,243 ha, of which c.45.9ha are within the bare earth ZTV which is c.3.7% of the overall area of the HCLA. At its closest point to the application area, the HCLA is c.820m east.
- 2.14** A review of the character area description for the HLCA as available on the GGAT website<sup>5</sup> indicated that it is similar to HLCA29, comprises a 'largely relict medieval/post medieval agricultural landscape', of 'small and medium sized irregular fields contained by frequently disused field boundaries, both hedged and dry stone'. Consequently, where appropriate the remainder of the description is that for HLCA29, this being a palimpsest of surviving archaeological features of considerable time-depth, and variety, indicating development and change of use over the last 12000 years. The earliest indications of human settlement of the landscape are the Mesolithic (10000-4400BC) sites at Fforch above Cwmparc, Cefn Glas, and Mynydd Ystradffernol, where flint assemblages and stray finds have been recorded. Similar finds from the area are dated stylistically to the Neolithic (4400- 2300BC), including a number of flint arrowheads and other finds often associated with charcoal from Mynydd Ystradffernol and Tarren Pantyffin and the find of a Petit tranchet axehead from the slopes of Mynydd Ynysfelo. Flint processing is also recorded on Mynydd Ty-

<sup>5</sup> [http://www.ggat.org.uk/cadw/historic\\_landscape/](http://www.ggat.org.uk/cadw/historic_landscape/)



newydd. The Bronze Age (2300-800BC) is represented by finds of a bronze tanged spearhead with ribbed blade from Blaenrhondda and a cairn field at Blaenrhondda.

**2.15** The character area description also notes that the HLCA a minor level of industrial activity with features dating from the early phases of mineral extraction, and also contains a small amount of modern forestation.

**2.16** Views from the HCLA towards the proposed development will in all cases contain elements of previously consented and constructed windfarms. Whilst these are modern elements in the view of the HLCA, they don't detract from an understanding of the settings of those elements of previous landscapes which are identified within the character area description. The proposed development will not create any inappropriate visual connections between elements not intended to be intervisible, or equally impact on the visual connection between historically linked elements within the HLCA, due to the nature of the development. Whilst the proposed development is unlikely to detract from the understanding of the dominant HLCA character as identified within the character area description as a largely relict medieval/post medieval agricultural landscape, there remains the possibility that it could experience some impact. Therefore, only the broad character area description has been taken forward to the ASIDOHLv2 Stage 3 assessment, shown in Table 5 below.

**Table 5: Indirect impacts on the historic character of the HLCA 034 Rhondda Fawr: Enclosed Valley Sides (Mynydd Penygraig)**

Impacts	Category and Score	Magnitude and Score
Overall impact on HLCA	B – 3	Very Slight – 1
Development Form	3	Very Slight – 1
Development Appearance	3	Very Slight – 1
<b>Magnitude of direct impacts</b>	$(3+1) + (3+1) + (3+1) / 3 \rightarrow 12/3$	<b>Total = 4 Slight Impact</b>

**2.17** Following the ASIDOHLv2 methodology, an overall magnitude of indirect impacts is then derived, which gives a score of 4, which the ASIDOHLv2 methodology equates to a 'slight' impact.

## HLCA032 Parc Cwm Brychinog

**2.18** The Parc Cwm Brychinog HCLA comprises c.444 ha, of which c.35ha are within the bare earth ZTV which is c.7.9% of the overall area of the HCLA. At its closest point to the application area, the HCLA is c.14m north.

- 2.19** A review of the character area description for the HLCA as available on the GGAT website<sup>6</sup> indicated that it comprises an upland mountain sheepwalk with limited forestation. It contains a small number of significant archaeological remains dating to the prehistoric and medieval periods with earliest finds from the area include Mesolithic flints, including microliths and a Neolithic stone axe. Crug-yr-Afan (SAM GM 233), a burial cairn of the Bronze Age (2000-1000BC) is singled out within the description as being located on a highpoint overlooking the junction of three valleys at Bwlch-yr-Afan; Cwm Parc, Cwm Ogwr Fawr and Cwm Nant-ty at the head of Cwm Afan on the western edge of the area and lies on a traditional north-south boundary.
- 2.20** The character area description also notes that the HLCA a minor level of industrial activity with features dating from the early phases of mineral extraction, and also contains a small amount of modern forestation.
- 2.21** Views from the HCLA towards the proposed development will in all cases contain elements of previously consented and constructed windfarms. Whilst these are modern elements in the view of the HLCA, they don't detract from an understanding of the settings of those elements of previous landscapes which are identified within the character area description. The proposed development will not create any inappropriate visual connections between elements not intended to be intervisible, but is likely to impact on the visual connection between the Crug-yr- Afan burial cairn and those burial cairns within the application site (Carn y Hyddod and neighbouring cairn scheduled monument GM243 and Round Barrow on the Werfa, GM499) and those located to the south west on Llyn Dwr Fawr (Mynydd Caerau Round Cains, GM232), due to the nature of the development. Whilst the proposed development is unlikely to detract from the understanding of the dominant HLCA character as identified within the character area description as an upland mountain sheepwalk, there remains the possibility that it could experience some impact. Therefore, only the broad character area description has been taken forward to the ASIDOHLv2 Stage 3 assessment, shown in Table 6 below

---

<sup>6</sup> [http://www.ggat.org.uk/cadw/historic\\_landscape/](http://www.ggat.org.uk/cadw/historic_landscape/)

**Table 6: Indirect impacts on the historic character of the HLCA032 Parc Cwm Brychinog**

Impacts	Category and Score	Magnitude and Score
Overall impact on HLCA	B – 3	Slight – 2
Views disrupted between Crug-yr-Afan scheduled cairn and those listed above	A – 4	Considerable – 4
Development Form	3.5	Considerable – 4
Development Appearance	3.5	Considerable – 4
<b>Magnitude of direct impacts</b>	$(3+2) + (4+4) + (3.5+4)$ $(3.5 + 4) / 4 \rightarrow 28/4$	<b>Total = 7</b> <b>Slight Impact</b>

**2.22** Following the ASIDOHLv2 methodology, an overall magnitude of indirect impacts is then derived, which gives a score of 7, which the ASIDOHLv2 methodology equates to a 'slight impact'.

## HLCA023 Rhondda Fach: East Enclosed Valley Sides

**2.23** The Rhondda Fach: East Enclosed Valley Sides HCLA comprises c.656 ha, of which c.115ha are within the bare earth ZTV which is c.17.5% of the overall area of the HCLA. At its closest point to the application area, the HCLA is c.7.7km east.

**2.24** A review of the character area description for the HLCA as available on the GGAT website<sup>7</sup> indicated that it comprises a relict agricultural landscape modified by industrial development. It contains surviving post medieval agricultural landscapes associated with the early post-medieval farmsteads east of the Afon Rhondda Fach and north of the Afon Rhondda south of Porth, upon which has been imposed quarrying along with the extensive workings of the National Colliery, Wattstown with its tramway/incline.

**2.25** Views from the HCLA towards the proposed development will in all cases contain elements of previously consented and constructed windfarms. Whilst these are modern elements in the view of the HLCA, they don't detract from an understanding of the settings of those elements of previous landscapes which are identified within the character area description. The proposed development will not create any inappropriate visual connections between elements not intended to be intervisible, or equally impact on the visual connection between historically linked elements within the HLCA, due to the nature of the development. Whilst the proposed development is

<sup>7</sup> [http://www.ggat.org.uk/cadw/historic\\_landscape/](http://www.ggat.org.uk/cadw/historic_landscape/)

unlikely to detract from the understanding of the dominant HLCA character as identified within the character area description as a largely relict medieval/post medieval agricultural landscape, there remains the possibility that it could experience some impact. Therefore, only the broad character area description has been taken forward to the ASIDOHLv2 Stage 3 assessment, shown in Table 7 below

**Table 7: Indirect impacts on the historic character of the HLCA023 Rhondda Fach: East Enclosed Valley Sides**

Impacts	Category and Score	Magnitude and Score
Overall impact on HLCA	B – 3	Very Slight – 1
Development Form	3	Very Slight – 1
Development Appearance	3	Very Slight – 1
<b>Magnitude of direct impacts</b>	$(3+1) + (3+1) + (3+1) / 3 \rightarrow 12/3$	<b>Total = 4 Slight Impact</b>

- 2.26** Following the ASIDOHLv2 methodology, an overall magnitude of indirect impacts is then derived, which gives a score of 4, which the ASIDOHLv2 methodology equates to a 'slight' impact.

#### HLCA025 Mynachdy Penrhys

- 2.27** The Mynachdy Penrhys HLCA comprises c.152 ha, of which c.0.73ha are within the bare earth ZTV which is c.0.5% of the overall area of the HCLA. At its closest point to the application area, the HCLA is c.6.6km east.
- 2.28** Given the very small proportion of the HLCA that lies within the bare earth ZTV, it is considered that it has no potential to be affected by the proposed development and consequently will not be considered further here .

#### HLCA023 Rhondda Fach: Western Enclosed Valley Sides

- 2.29** The Rhondda Fach: Western Enclosed Valley Sides HCLA comprises c.198 ha, of which c.12.49 ha are within the bare earth ZTV which is c.6.3% of the overall area of the HCLA. At its closest point to the application area, the HCLA is c.4.9km north east.
- 2.30** A review of the character area description for the HLCA as available on the GGAT website<sup>8</sup> indicated that it comprises a relict agricultural landscape modified by industrial development, in the form of quarries. It contains surviving Bronze Age (2300-800BC) features, typically funerary monuments, such as the round

<sup>8</sup> [http://www.ggat.org.uk/cadw/historic\\_landscape/](http://www.ggat.org.uk/cadw/historic_landscape/)



barrow/cairn(s) on Tarren Maerdy and a find of a bronze axe nearby. A number of medieval settlement features are also preserved in the area, such as the characteristic platform house sites of Twyn Disgwylfa and Craig Rhondda-fach.

**2.31** Views from the HCLA towards the proposed development will in all cases contain elements of previously consented and constructed windfarms. Whilst these are modern elements in the view of the HLCA, they don't detract from an understanding of the settings of those elements of previous landscapes which are identified within the character area description. The proposed development will not create any inappropriate visual connections between elements not intended to be intervisible, or equally impact on the visual connection between historically linked elements within the HLCA, due to the nature of the development. Whilst the proposed development is unlikely to detract from the understanding of the dominant HLCA character as identified within the character area description as a largely relict medieval/post medieval agricultural landscape, there remains the possibility that it could experience some impact. Therefore, only the broad character area description has been taken forward to the ASIDOHLv2 Stage 3 assessment, shown in Table 8 below.

**Table 8: Indirect impacts on the historic character of the HLCA023 Rhondda Fach: Western Enclosed Valley Sides**

Impacts	Category and Score	Magnitude and Score
Overall impact on HLCA	B – 3	Very Slight – 1
Development Form	3	Very Slight – 1
Development Appearance	3	Very Slight – 1
<b>Magnitude of direct impacts</b>	$(3+1) + (3+1) + (3+1) / 3 \rightarrow 12/3$	<b>Total = 4 Slight Impact</b>

**2.32** Following the ASIDOHLv2 methodology, an overall magnitude of indirect impacts is then derived, which gives a score of 4, which the ASIDOHLv2 methodology equates to a 'slight' impact.

## Margam Mountain Landscape of Special Historic Interest

### HLCA013 Upper Cwm Kenfig

**2.33** The Upper Cwm Kenfig HCLA comprises c.95 ha, of which c.78 ha are within the bare earth ZTV which is c.81.4% of the overall area of the HCLA. At its closest point to the application area, the HCLA is c.8.6km south west.

**2.34** A review of the character area description for the HLCA as available on the GGAT website<sup>9</sup> indicated that it is characterised by its enclosed and partly semi-improved pasture. The area represents a surviving fragment of the once extensive open upland grazing of Margam Mountain and comprises a remnant of a formerly much more extensive area of upland grazing. The character area description states the most visible remains in the area are relict prehistoric and medieval features, such as the impressive Iron Age Camp or Hillfort of Caer Blaen y Cwm (SAM GM 58), which dominates the upper portion of Cwm Cynffig, the Kenfig Valley. This site is one of a number in the vicinity, which appear to be controlling access between the valleys, ridgeway routes and the higher pastures of Mynydd Margam.

**2.35** Views from the HLCA towards the proposed development will in all cases contain elements of previously consented and constructed windfarms. Whilst these are modern elements in the view of the HLCA, they don't detract from an understanding of the settings of those elements of previous landscapes which are identified within the character area description. The proposed development will not create any inappropriate visual connections between elements not intended to be intervisible, or equally impact on the visual connection between historically linked elements within the HLCA, due to the nature of the development. Whilst the proposed development is unlikely to detract from the understanding of the dominant HLCA character as identified within the character area description as a largely relict extensive area of upland grazing, there remains the possibility that it could experience some impact. Therefore, only the broad character area description has been taken forward to the ASIDOHLv2 Stage 3 assessment, shown in Table 9 below.

**Table 9: Indirect impacts on the historic character of the HLCA013 Upper Cwm Kenfig**

Impacts	Category and Score	Magnitude and Score
Overall impact on HLCA	B – 3	Very Slight – 1
Development Form	3	Very Slight – 1
Development Appearance	3	Very Slight – 1
<b>Magnitude of direct impacts</b>	$(3+1) + (3+1) + (3+1) / 3 \rightarrow 12/3$	<b>Total = 4 Slight Impact</b>

**2.36** Following the ASIDOHLv2 methodology, an overall magnitude of indirect impacts is then derived, which gives a score of 4, which the ASIDOHLv2 methodology equates to a 'slight' impact.

<sup>9</sup> [http://www.ggat.org.uk/cadw/historic\\_landscape/](http://www.ggat.org.uk/cadw/historic_landscape/)

## HLCA010 Mynydd Margam Forest

- 2.37** The Mynydd Margam HCLA comprises c.1640 ha, of which c.393 ha are within the bare earth ZTV which is c.24% of the overall area of the HCLA. At its closest point to the application area, the HCLA is c.7.4km south west.
- 2.38** A review of the character area description for the HLCA as available on the GGAT website<sup>10</sup> indicated that it is characterised by an extensive 20<sup>th</sup> century forestry plantation, formerly occupied by a mixture of formerly unenclosed and evolved/irregular and varied enclosure. The character area description also states area also contains tracts of ancient woodland and Bronze Age cairns.
- 2.39** Views from the HCLA towards the proposed development will in all cases contain elements of previously consented and constructed windfarms. Whilst these are modern elements in the view of the HLCA, they don't detract from an understanding of the settings of those elements of previous landscapes which are identified within the character area description. The proposed development will not create any inappropriate visual connections between elements not intended to be intervisible, or equally impact on the visual connection between historically linked elements within the HLCA, due to the nature of the development. Whilst the proposed development is unlikely to detract from the understanding of the dominant HLCA character as identified within the character area description as a largely unenclosed and evolved/irregular and varied enclosure landscape, there remains the possibility that it could experience some impact. Therefore, only the broad character area description has been taken forward to the ASIDOHLv2 Stage 3 assessment, shown in Table 10 below.

**Table 10: Indirect impacts on the historic character of the HLCA010 Mynydd Margam Forest**

Impacts	Category and Score	Magnitude and Score
Overall impact on HLCA	B – 3	Very Slight – 1
Development Form	3	Very Slight – 1
Development Appearance	3	Very Slight – 1
<b>Magnitude of direct impacts</b>	$(3+1) + (3+1) + (3+1) / 3 \rightarrow 12/3$	<b>Total = 4 Slight Impact</b>

- 2.40** Following the ASIDOHLv2 methodology, an overall magnitude of indirect impacts is then derived, which gives a score of 4, which the ASIDOHLv2 methodology equates to a 'slight' impact.

<sup>10</sup> [http://www.ggat.org.uk/cadw/historic\\_landscape/](http://www.ggat.org.uk/cadw/historic_landscape/)

## HLCA005 Llangynwyd

- 2.41** The Llangynwyd HCLA comprises c.704 ha, of which c.337 ha are within the bare earth ZTV which is c.47.9% of the overall area of the HCLA. At its closest point to the application area, the HCLA is c.6.1km south west.
- 2.42** A review of the character area description for the HLCA as available on the GGAT website<sup>11</sup> indicated that the focus of the area is on the nucleated medieval settlement of Llangynwyd, at the centre of which is the Grade II\* listed church of St Cynwyd, and has been so since early medieval times, if not before. The area is essentially an evolved agricultural landscape, which retains indications of settlement and enclosure developed from the prehistoric, early medieval, medieval and post-medieval periods. The western fringe of the area is demarcated by late prehistoric defended enclosures such as Y Bwlwarcau and beyond the area, the camp at Rhyd Blaen-y-cwm, which control access to the high ground of Mynydd Margam.
- 2.43** Views from the HCLA towards the proposed development will in all cases contain elements of previously consented and constructed windfarms. Whilst these are modern elements in the view of the HLCA, they don't detract from an understanding of the settings of those elements of previous landscapes which are identified within the character area description. The proposed development will not create any inappropriate visual connections between elements not intended to be intervisible, or equally impact on the visual connection between historically linked elements within the HLCA, due to the nature of the development. Whilst the proposed development is unlikely to detract from the understanding of the dominant HLCA character as identified within the character area description as a largely unenclosed and evolved/irregular and varied enclosure landscape, there remains the possibility that it could experience some impact. Therefore, only the broad character area description has been taken forward to the ASIDOHLv2 Stage 3 assessment, shown in Table 11 below.

---

<sup>11</sup> [http://www.ggat.org.uk/cadw/historic\\_landscape/](http://www.ggat.org.uk/cadw/historic_landscape/)



**Table 11: Indirect impacts on the historic character of HLCA005 Llangynwyd**

Impacts	Category and Score	Magnitude and Score
Overall impact on HLCA	B – 3	Very Slight – 1
Church of St Cynwyd	A-4	Very Slight – 1
Development Form	3.5	Very Slight – 1
Development Appearance	3.5	Very Slight – 1
<b>Magnitude of direct impacts</b>	$(3+1) + (4+1) + (3.5+1) + (3.5+1) / 4 \rightarrow 18/4$	<b>Total = 4.5</b> <b>Slight Impact</b>

**2.44** Following the ASIDOHLv2 methodology, an overall magnitude of indirect impacts is then derived, which gives a score of 4.5, which the ASIDOHLv2 methodology equates to a 'slight' impact.

#### HLCA011 Waun-y-Gilfach

**2.45** The Waun-y-Gilfach HCLA comprises c.27 ha, of which c.24 ha are within the bare earth ZTV which is c.91.2% of the overall area of the HCLA. At its closest point to the application area, the HCLA is c.7.6km south west.

**2.46** A review of the character area description for the HLCA as available on the GGAT website<sup>12</sup> indicated it comprises a small, discreet area of forested hilltop formerly open mountain moorland or 'waun' associated with surrounding farms and is characterised as an area of 20th century forestry plantation on land formerly unenclosed 'waun'. The area, a low hilltop south of Cwm Cae-lloi, contains little in the way of known archaeological remains, apart from minor communication features such as tracks and footpaths.

**2.47** Given the lack of important historic assets within the HLCA, it is considered that it has no potential to be affected by the proposed development and consequently will not be considered further here.

#### HLCA012 Nant y Gadlys

**2.48** The Nant y Gadlys HCLA comprises c.54 ha, of which c.13 ha are within the bare earth ZTV which is c.24.4% of the overall area of the HCLA. At its closest point to the application area, the HCLA is c.7.3km south west.

<sup>12</sup> [http://www.ggat.org.uk/cadw/historic\\_landscape/](http://www.ggat.org.uk/cadw/historic_landscape/)

**2.49** A review of the character area description for the HLCA as available on the GGAT website<sup>13</sup> indicated that the area is characterised as an area of surviving Ancient Woodland with other broadleaved woodland within deeply entrenched stream valley with post-medieval agricultural fieldscapes and associated scatter of vernacular buildings. An important characteristic element of this landscape is in the form of industrial archaeological remains associated in particular with corn milling, and later the woollen industry; features include millraces.

**2.50** Views from the HCLA towards the proposed development will in all cases contain elements of previously consented and constructed windfarms. Whilst these are modern elements in the view of the HLCA, they don't detract from an understanding of the settings of those elements of previous landscapes which are identified within the character area description. The proposed development will not create any inappropriate visual connections between elements not intended to be intervisible, or equally impact on the visual connection between historically linked elements within the HLCA, due to the nature of the development. Whilst the proposed development is unlikely to detract from the understanding of the dominant HLCA character as identified within the character area description as a largely unenclosed and evolved/irregular and varied enclosure landscape, there remains the possibility that it could experience some impact. Therefore, only the broad character area description has been taken forward to the ASIDOHLv2 Stage 3 assessment, shown in Table 12 below.

**Table 12: Indirect impacts on the historic character of HLCA012 Nant y Gadlys**

Impacts	Category and Score	Magnitude and Score
Overall impact on HLCA	B – 3	Very Slight – 1
Development Form	3.5	Very Slight – 1
Development Appearance	3.5	Very Slight – 1
<b>Magnitude of direct impacts</b>	$(3+1) + (3.5+1) + (3.5+1) / 3 \rightarrow 12/3$	<b>Total = 4.33 Slight Impact</b>

**2.51** Following the ASIDOHLv2 methodology, an overall magnitude of indirect impacts is then derived, which gives a score of 4.33, which the ASIDOHLv2 methodology equates to a 'slight' impact.

<sup>13</sup> [http://www.ggat.org.uk/cadw/historic\\_landscape/](http://www.ggat.org.uk/cadw/historic_landscape/)

## HLCA014 Moet Ton Mawr

- 2.52** The Nant y Gadlys HCLA comprises c.51 ha, of which c.34 ha are within the bare earth ZTV which is c.66.7% of the overall area of the HCLA. At its closest point to the application area, the HCLA is c.9.5km south west.
- 2.53** A review of the character area description for the HLCA as available on the GGAT website<sup>14</sup> indicated that the area comprises a small, detached area of 20th century plantation, formerly part of the extensive open mountain pasture of Mynydd Margam and once similar in character to HLCA013 and is characterised as 20th century forestry plantation on former open unenclosed mountain. Known historic assets comprise a single funerary and ritual feature, a Bronze Age cairn, an intrenchment, or holloway, and the remains of former upland trackways.
- 2.54** Given the relative lack of important historic assets within the HLCA, it is considered that it has no potential to be affected by the proposed development and consequently will not be considered further here.

.

---

<sup>14</sup> [http://www.ggat.org.uk/cadw/historic\\_landscape/](http://www.ggat.org.uk/cadw/historic_landscape/)

## 3. Stage 4 Evaluation of Relative Importance

### Introduction

**3.1** The initial part of the fourth stage of the ASIDOHLv2 process and report is to evaluate the Relative importance of the portion(s) of the Historic Character Area(s) affected in relation to the whole of the Historic Character Area (**Step A**) affected and the whole of the historic landscape area on the Register (**Step B**).

### Rhondda Landscape of Special Historic Interest

#### HLCA030 Rhondda Uplands

**Table 13: HLCA030 Rhondda Uplands – relative importance**

Value	Very High / Very Good 5	High / Good 4	Moderate / Medium 3	Low 2	Very Low / poor 1	Very High / Very Good 5	High / Good 4	Moderate / Medium 3	Low 2	Very Low / poor 1
Criterion	Step A: Whole of Historic Character Area					Step B: Whole of Historic Landscape Area on the Register				
Rarity				X						X
Representativeness				X						X
Documentation				X						X
Group Value				X						X
Survival				X						X
Condition				X						X
Coherence				X						X
Integrity				X						X
Potential				X						X
Amenity				X						X
Associations				X						X
SCORES				22						11

### 3.2

Views from the HCLA towards the proposed development will in all cases contain elements of previously consented and constructed windfarms, some within the HLCA and others outside of it. Whilst these are modern elements in the view of the HLCA, they won't detract from an understanding of the settings of those elements of previous landscapes which are identified within the character area description. The proposed development will not create any inappropriate visual connections between elements not intended to be intervisible, or equally impact on the visual connection between historically linked elements within the HLCA, due to the nature of the development. Whilst the proposed development is unlikely to detract from the understanding of the dominant HLCA character as identified within the character area description as an unimproved, common upland sheepwalk, there remains the possibility that it could experience some limited impact.

## HLCA029 Rhondda Fawr: Enclosed Valley Sides

**Table 14: HLCA029 Rhondda Fawr – relative importance**

Value	Very High / Very Good 5	High / Good 4	Moderate / Medium 3	Low 2	Very Low / poor 1	Very High / Very Good 5	High / Good 4	Moderate / Medium 3	Low 2	Very Low / poor 1
Criterion	Step A: Whole of Historic Character Area					Step B: Whole of Historic Landscape Area on the Register				
Rarity				X						X
Representativeness				X						X
Documentation				X						X
Group Value				X						X
Survival				X						X
Condition				X						X
Coherence				X						X
Integrity				X						X
Potential				X						X
Amenity				X						X
Associations				X						X
SCORES				22						11

### 3.3

Views from the HLCA towards the proposed development will in all cases contain elements of previously consented and constructed windfarms, some within the HLCA and others outside of it. Whilst these are modern elements in the view of the HLCA, they won't detract from an understanding of the settings of those elements of previous landscapes which are identified within the character area description. The proposed development will not create any inappropriate visual connections between elements not intended to be intervisible, or equally impact on the visual connection between historically linked elements within the HLCA, due to the nature of the development. Whilst the proposed development is unlikely to detract from the understanding of the dominant HLCA character as identified within the character area description as a largely relict medieval/post medieval agricultural landscape, there remains the possibility that it could experience some limited impact.



## HLCA034 Rhondda Fawr: Enclosed Valley Sides (Mynydd Penygraig)

**Table 15: HLCA034 Rhondda Uplands (Mynydd Penygraig) – relative importance**

Value	Very High / Very Good 5	High / Good 4	Moderate / Medium 3	Low 2	Very Low/ poor 1	Very High / Very Good 5	High / Good 4	Moderate / Medium 3	Low 2	Very Low / poor 1
Criterion	Step A: Whole of Historic Character Area					Step B: Whole of Historic Landscape Area on the Register				
Rarity				X						X
Representativeness				X						X
Documentation				X						X
Group Value				X						X
Survival				X						X
Condition				X						X
Coherence				X						X
Integrity				X						X
Potential				X						X
Amenity				X						X
Associations				X						X
SCORES				22						11

**3.4** Views from the HLCA towards the proposed development will in all cases contain elements of previously consented and constructed windfarms. Whilst these are modern elements in the view of the HLCA, they don't detract from an understanding of the settings of those elements of previous landscapes which are identified within the character area description. The proposed development will not create any inappropriate visual connections between elements not intended to be intervisible, or equally impact on the visual connection between historically linked elements within the HLCA, due to the nature of the development. Whilst the proposed development is unlikely to detract from the understanding of the dominant HLCA character as identified within the character area description as a largely relict medieval/post medieval agricultural landscape, there remains the possibility that it could experience some impact.

## HLCA032 Parc Cwm Brychinog

**Table 16: HLCA032 Parc Cwm Brynchinog – relative importance**

Value	Very High / Very Good 5	High / Good 4	Moderate / Medium 3	Low 2	Very Low / poor 1	Very High / Very Good 5	High / Good 4	Moderate / Medium 3	Low 2	Very Low / poor 1
Criterion	Step A: Whole of Historic Character Area					Step B: Whole of Historic Landscape Area on the Register				
Rarity				X						X
Representativeness				X						X
Documentation				X						X
Group Value			X							X
Survival				X						X
Condition				X						X
Coherence				X						X
Integrity				X						X
Potential				X						X
Amenity				X						X
Associations			X							X
SCORES			6	18						11

### 3.5

Views from the HCLA towards the proposed development will in all cases contain elements of previously consented and constructed windfarms. Whilst these are modern elements in the view of the HLCA, they don't detract from an understanding of the settings of those elements of previous landscapes which are identified within the character area description. The proposed development will not create any inappropriate visual connections between elements not intended to be intervisible, but is likely to impact on the visual connection between the Crug-yr-Afan burial cairn and those burial cairns within the application site (Carn y Hyddod and neighbouring cairn scheduled monument GM243 and Round Barrow on the Werfa, GM499) and those located to the south west on Llyn Dwr Fawr (Mynydd Caerau Round Cairns, GM232), due to the nature of the development. Whilst the proposed development is unlikely to detract from the understanding of the dominant HLCA

character as identified within the character area description as an upland mountain sheepwalk, there remains the possibility that it could experience some impact.

## HLCA023 Rhondda Fach: Eastern Enclosed Valley Sides

**Table 17: HLCA023 Rhondda Fach (East) – relative importance**

Value	Very High / Very Good 5	High / Good 4	Moderate / Medium 3	Low 2	Very Low / poor 1	Very High / Very Good 5	High / Good 4	Moderate / Medium 3	Low 2	Very Low / poor 1
Criterion	Step A: Whole of Historic Character Area					Step B: Whole of Historic Landscape Area on the Register				
Rarity				X						X
Representativeness				X						X
Documentation				X						X
Group Value				X						X
Survival				X						X
Condition				X						X
Coherence				X						X
Integrity				X						X
Potential				X						X
Amenity				X						X
Associations				X						X
SCORES				22						11

**3.6** Views from the HLCA towards the proposed development will in all cases contain elements of previously consented and constructed windfarms. Whilst these are modern elements in the view of the HLCA, they don't detract from an understanding of the settings of those elements of previous landscapes which are identified within the character area description. The proposed development will not create any inappropriate visual connections between elements not intended to be intervisible, or equally impact on the visual connection between historically linked elements within the HLCA, due to the nature of the development. Whilst the proposed development is unlikely to detract from the understanding of the dominant HLCA character as identified within the character area description as a largely relict medieval/post

medieval agricultural landscape, there remains the possibility that it could experience some impact.

## HLCA024 Rhondda Fach: Western Enclosed Valley Sides

**Table 18: HLCA Rhondda Fach (west) – relative importance**

Value	Very High / Very Good 5	High / Good 4	Moderate / Medium 3	Low 2	Very Low / poor 1	Very High / Very Good 5	High / Good 4	Moderate / Medium 3	Low 2	Very Low / poor 1
Criterion	Step A: Whole of Historic Character Area					Step B: Whole of Historic Landscape Area on the Register				
Rarity				X						X
Representativeness				X						X
Documentation				X						X
Group Value				X						X
Survival				X						X
Condition				X						X
Coherence				X						X
Integrity				X						X
Potential				X						X
Amenity				X						X
Associations				X						X
SCORES				22						11

**3.7** Views from the HLCA towards the proposed development will in all cases contain elements of previously consented and constructed windfarms. Whilst these are modern elements in the view of the HLCA, they don't detract from an understanding of the settings of those elements of previous landscapes which are identified within the character area description. The proposed development will not create any inappropriate visual connections between elements not intended to be intervisible, or equally impact on the visual connection between historically linked elements within the HLCA, due to the nature of the development. Whilst the proposed development is unlikely to detract from the understanding of the dominant HLCA character as identified within the character area description as a largely relict medieval/post

medieval agricultural landscape, there remains the possibility that it could experience some impact.

## Margam Mountain Landscape of Special Historic Interest

HLCA013 Upper Cwm Kenfig

**Table 19: HLCA013 Upper Cwm Kenfig – relative importance**

Value	Very High / Very Good 5	High / Good 4	Moderate / Medium 3	Low 2	Very Low/ poor 1	Very High / Very Good 5	High / Good 4	Moderate / Medium 3	Low 2	Very Low / poor 1
Criterion	Step A: Whole of Historic Character Area					Step B: Whole of Historic Landscape Area on the Register				
Rarity				X						X
Representativeness				X						X
Documentation				X						X
Group Value				X						X
Survival				X						X
Condition				X						X
Coherence				X						X
Integrity				X						X
Potential				X						X
Amenity				X						X
Associations				X						X
SCORES				22						11

### 3.8

Views from the HLCA towards the proposed development will in all cases contain elements of previously consented and constructed windfarms. Whilst these are modern elements in the view of the HLCA, they don't detract from an understanding of the settings of those elements of previous landscapes which are identified within the character area description. The proposed development will not create any inappropriate visual connections between elements not intended to be intervisible, or equally impact on the visual connection between historically linked elements within the HLCA, due to the nature of the development. Whilst the proposed development is

unlikely to detract from the understanding of the dominant HLCA character as identified within the character area description as a largely relict extensive area of upland grazing, there remains the possibility that it could experience some impact.

## HLCA010 Mynydd Margam Forest

**Table 20: HLCA010 Mynydd Margam Forest – relative importance**

Value	Very High / Very Good 5	High / Good 4	Moderate / Medium 3	Low 2	Very Low/ poor 1	Very High / Very Good 5	High / Good 4	Moderate / Medium 3	Low 2	Very Low / poor 1
Criterion	Step A: Whole of Historic Character Area					Step B: Whole of Historic Landscape Area on the Register				
Rarity				X						X
Representativeness				X						X
Documentation				X						X
Group Value				X						X
Survival				X						X
Condition				X						X
Coherence				X						X
Integrity				X						X
Potential				X						X
Amenity				X						X
Associations				X						X
<b>SCORES</b>				<b>22</b>						<b>11</b>

**3.9** Views from the HLCA towards the proposed development will in all cases contain elements of previously consented and constructed windfarms. Whilst these are modern elements in the view of the HLCA, they don't detract from an understanding of the settings of those elements of previous landscapes which are identified within the character area description. The proposed development will not create any inappropriate visual connections between elements not intended to be intervisible, or equally impact on the visual connection between historically linked elements within the HLCA, due to the nature of the development. Whilst the proposed development is unlikely to detract from the understanding of the dominant HLCA character as



identified within the character area description as a largely unenclosed and evolved/irregular and varied enclosure landscape, there remains the possibility that it could experience some impact.

## HLCA005 Llangynwyd

**Table 21: HLCA005 Llangynwyd – relative importance**

Value	Very High / Very Good 5	High / Good 4	Moderate / Medium 3	Low 2	Very Low/ poor 1	Very High / Very Good 5	High / Good 4	Moderate / Medium 3	Low 2	Very Low / poor 1
Criterion	Step A: Whole of Historic Character Area					Step B: Whole of Historic Landscape Area on the Register				
Rarity				X						X
Representativeness				X						X
Documentation				X						X
Group Value				X						X
Survival				X						X
Condition				X						X
Coherence				X						X
Integrity				X						X
Potential				X						X
Amenity				X						X
Associations				X						X
<b>SCORES</b>				<b>22</b>						<b>11</b>

**3.10** Views from the HCLA towards the proposed development will in all cases contain elements of previously consented and constructed windfarms. Whilst these are modern elements in the view of the HLCA, they don't detract from an understanding of the settings of those elements of previous landscapes which are identified within the character area description. The proposed development will not create any inappropriate visual connections between elements not intended to be intervisible, or equally impact on the visual connection between historically linked elements within the HLCA, due to the nature of the development. Whilst the proposed development is unlikely to detract from the understanding of the dominant HLCA character as

identified within the character area description as a largely unenclosed and evolved/irregular and varied enclosure landscape, there remains the possibility that it could experience some impact.

## HLCA012 Nant y Gadlys

**Table 22: HLCA012 Nant y Gadlys – relative importance**

Value	Very High / Very Good	High / Good	Moderate / Medium	Low	Very Low / poor	Very High / Very Good	High / Good	Moderate / Medium	Low	Very Low / poor
Criterion	Whole of Historic Character Area					Whole of Historic Landscape Area on the Register				
Rarity				X						X
Representativeness				X						X
Documentation				X						X
Group Value				X						X
Survival				X						X
Condition				X						X
Coherence				X						X
Integrity				X						X
Potential				X						X
Amenity				X						X
Associations				X						X
SCORES				22						11

**3.11** Views from the HCLA towards the proposed development will in all cases contain elements of previously consented and constructed windfarms. Whilst these are modern elements in the view of the HLCA, they don't detract from an understanding of the settings of those elements of previous landscapes which are identified within the character area description. The proposed development will not create any inappropriate visual connections between elements not intended to be intervisible, or equally impact on the visual connection between historically linked elements within

the HLCA, due to the nature of the development. Whilst the proposed development is unlikely to detract from the understanding of the dominant HLCA character as identified within the character area description as a largely unenclosed and evolved/irregular and varied enclosure landscape, there remains the possibility that it could experience some impact.

- 3.12** The next step within Stage 4 (**Step C**) is undertake the same exercise, but this time evaluating the relative importance of the affected parts of the Historic Character Areas concerned in the national context.

## HLCA030 Rhondda Uplands

**Table 23: HLCA030 Rhondda Uplands – relative importance in a national context**

Step C Value	Very High / Very Good 5	High / Good 4	Moderate / Medium 3	Low 2	Very Low / poor 1
Rarity					X
Representativeness					X
Documentation					X
Group Value					X
Survival					X
Condition					X
Coherence					X
Integrity					X
Potential					X
Amenity					X
Associations					X
SCORE					11

- 3.13** Views from the HLCA towards the proposed development will in all cases contain elements of previously consented and constructed windfarms, some within the HLCA and others outside of it. Whilst these are modern elements in the view of the HLCA, they won't detract from an understanding of the settings of those elements of

previous landscapes which are identified within the character area description. The proposed development will not create any inappropriate visual connections between elements not intended to be intervisible, or equally impact on the visual connection between historically linked elements within the HLCA, due to the nature of the development. Whilst the proposed development is unlikely to detract from the understanding of the dominant HLCA character as identified within the character area description as an unimproved, common upland sheepwalk, there remains the possibility that it could experience some limited impact.

## HLCA029 Rhondda Fawr: Enclosed Valley Sides

**Table 24: HLCA029 Rhondda Fawr – relative importance in a national context**

Step C Value	Very High / Very Good 5	High / Good 4	Moderate / Medium 3	Low 2	Very Low / poor 1
Rarity					X
Representativeness					X
Documentation					X
Group Value					X
Survival					X
Condition					X
Coherence					X
Integrity					X
Potential					X
Amenity					X
Associations					X
SCORE					11

**3.14** Views from the HLCA towards the proposed development will in all cases contain elements of previously consented and constructed windfarms, some within the HLCA and others outside of it. Whilst these are modern elements in the view of the HLCA, they won't detract from an understanding of the settings of those elements of previous landscapes which are identified within the character area description. The

proposed development will not create any inappropriate visual connections between elements not intended to be intervisible, or equally impact on the visual connection between historically linked elements within the HLCA, due to the nature of the development. Whilst the proposed development is unlikely to detract from the understanding of the dominant HLCA character as identified within the character area description as a largely relict medieval/post medieval agricultural landscape, there remains the possibility that it could experience some limited impact.

#### HLCA034 Rhondda Fawr: Enclosed Valley Sides (Mynydd Penygraig)

**Table 25: HLCA034 Rhondda Fawr (Mynydd Penygraig) – relative importance in a national context**

Step C Value	Very High / Very Good 5	High / Good 4	Moderate / Medium 3	Low 2	Very Low / poor 1
Rarity					X
Representativeness					X
Documentation					X
Group Value					X
Survival					X
Condition					X
Coherence					X
Integrity					X
Potential					X
Amenity					X
Associations					X
SCORE					11

**3.15** Views from the HCLA towards the proposed development will in all cases contain elements of previously consented and constructed windfarms. Whilst these are modern elements in the view of the HLCA, they don't detract from an understanding of the settings of those elements of previous landscapes which are identified within the character area description. The proposed development will not create any inappropriate visual connections between elements not intended to be intervisible, or

equally impact on the visual connection between historically linked elements within the HLCA, due to the nature of the development. Whilst the proposed development is unlikely to detract from the understanding of the dominant HLCA character as identified within the character area description as a largely relict medieval/post medieval agricultural landscape, there remains the possibility that it could experience some impact.

## HLCA032 Parc Cwm Brychinog

**Table 26: HLCA032 Parc Cwm Brychinog – relative importance in a national context**

Step C Value	Very High / Very Good 5	High / Good 4	Moderate / Medium 3	Low 2	Very Low / poor 1
<b>Rarity</b>					<b>X</b>
<b>Representativeness</b>					<b>X</b>
<b>Documentation</b>					<b>X</b>
<b>Group Value</b>					<b>X</b>
<b>Survival</b>					<b>X</b>
<b>Condition</b>					<b>X</b>
<b>Coherence</b>					<b>X</b>
<b>Integrity</b>					<b>X</b>
<b>Potential</b>					<b>X</b>
<b>Amenity</b>					<b>X</b>
<b>Associations</b>					<b>X</b>
<b>SCORE</b>					<b>11</b>

**3.16** Views from the HCLA towards the proposed development will in all cases contain elements of previously consented and constructed windfarms. Whilst these are modern elements in the view of the HLCA, they don't detract from an understanding of the settings of those elements of previous landscapes which are identified within the character area description. The proposed development will not create any inappropriate visual connections between elements not intended to be intervisible, but is likely to impact on the visual connection between the Crug-yr- Afan burial cairn and those burial cairns within the application site (Carn y Hyddod and



neighbouring cairn scheduled monument GM243 and Round Barrow on the Werfa, GM499) and those located to the south west on Llyn Dwr Fawr (Mynydd Caerau Round Cains, GM232), due to the nature of the development. Whilst the proposed development is unlikely to detract from the understanding of the dominant HLCA character as identified within the character area description as an upland mountain sheepwalk, there remains the possibility that it could experience some impact.

## HLCA023 Rhondda Fach: Eastern Enclosed Valley Sides

**Table 27: HLCA023 Rhondda Fach (East) – relative importance in a national context**

Step C Value	Very High / Very Good 5	High / Good 4	Moderate / Medium 3	Low 2	Very Low / poor 1
<b>Rarity</b>					<b>X</b>
<b>Representativeness</b>					<b>X</b>
<b>Documentation</b>					<b>X</b>
<b>Group Value</b>					<b>X</b>
<b>Survival</b>					<b>X</b>
<b>Condition</b>					<b>X</b>
<b>Coherence</b>					<b>X</b>
<b>Integrity</b>					<b>X</b>
<b>Potential</b>					<b>X</b>
<b>Amenity</b>					<b>X</b>
<b>Associations</b>					<b>X</b>
<b>SCORE</b>					<b>11</b>

**3.17** Views from the HCLA towards the proposed development will in all cases contain elements of previously consented and constructed windfarms. Whilst these are modern elements in the view of the HLCA, they don't detract from an understanding of the settings of those elements of previous landscapes which are identified within the character area description. The proposed development will not create any inappropriate visual connections between elements not intended to be intervisible, or equally impact on the visual connection between historically linked elements within the HLCA, due to the nature of the development. Whilst the proposed development is

unlikely to detract from the understanding of the dominant HLCA character as identified within the character area description as a largely relict medieval/post medieval agricultural landscape, there remains the possibility that it could experience some impact.

## HLCA024 Rhondda Fach: Western Enclosed Valley Sides

**Table 28: HLCA024 Rhondda Fach (West) – relative importance in a national context**

Step C Value	Very High / Very Good 5	High / Good 4	Moderate / Medium 3	Low 2	Very Low / poor 1
<b>Rarity</b>					<b>X</b>
<b>Representativeness</b>					<b>X</b>
<b>Documentation</b>					<b>X</b>
<b>Group Value</b>					<b>X</b>
<b>Survival</b>					<b>X</b>
<b>Condition</b>					<b>X</b>
<b>Coherence</b>					<b>X</b>
<b>Integrity</b>					<b>X</b>
<b>Potential</b>					<b>X</b>
<b>Amenity</b>					<b>X</b>
<b>Associations</b>					<b>X</b>
<b>SCORE</b>					<b>11</b>

**3.18** Views from the HLCA towards the proposed development will in all cases contain elements of previously consented and constructed windfarms. Whilst these are modern elements in the view of the HLCA, they don't detract from an understanding of the settings of those elements of previous landscapes which are identified within the character area description. The proposed development will not create any inappropriate visual connections between elements not intended to be intervisible, or equally impact on the visual connection between historically linked elements within the HLCA, due to the nature of the development. Whilst the proposed development is unlikely to detract from the understanding of the dominant HLCA character as identified within the character area description as a largely relict medieval/post

medieval agricultural landscape, there remains the possibility that it could experience some impact.

## Margam Mountain Landscape of Special Historic Interest

### HLCA013 Upper Cwm Kenfig

**Table 29: HLCA013 Upper Cwm Kenfig – relative importance in a national context**

Step C Value	Very High / Very Good 5	High / Good 4	Moderate / Medium 3	Low 2	Very Low / poor 1
<b>Rarity</b>					<b>X</b>
<b>Representativeness</b>					<b>X</b>
<b>Documentation</b>					<b>X</b>
<b>Group Value</b>					<b>X</b>
<b>Survival</b>					<b>X</b>
<b>Condition</b>					<b>X</b>
<b>Coherence</b>					<b>X</b>
<b>Integrity</b>					<b>X</b>
<b>Potential</b>					<b>X</b>
<b>Amenity</b>					<b>X</b>
<b>Associations</b>					<b>X</b>
<b>SCORE</b>					<b>11</b>

**3.19** Views from the HCLA towards the proposed development will in all cases contain elements of previously consented and constructed windfarms. Whilst these are modern elements in the view of the HLCA, they don't detract from an understanding of the settings of those elements of previous landscapes which are identified within the character area description. The proposed development will not create any inappropriate visual connections between elements not intended to be intervisible, or equally impact on the visual connection between historically linked elements within the HLCA, due to the nature of the development. Whilst the proposed development is unlikely to detract from the understanding of the dominant HLCA character as

identified within the character area description as a largely relict extensive area of upland grazing, there remains the possibility that it could experience some impact.

## HLCA010 Mynydd Margam

**Table 30: HLCA010 Mynydd Margam – relative importance in a national context**

Step C Value	Very High / Very Good 5	High / Good 4	Moderate / Medium 3	Low 2	Very Low / poor 1
Rarity					X
Representativeness					X
Documentation					X
Group Value					X
Survival					X
Condition					X
Coherence					X
Integrity					X
Potential					X
Amenity					X
Associations					X
SCORE					11

**3.20** Views from the HLCA towards the proposed development will in all cases contain elements of previously consented and constructed windfarms. Whilst these are modern elements in the view of the HLCA, they don't detract from an understanding of the settings of those elements of previous landscapes which are identified within the character area description. The proposed development will not create any inappropriate visual connections between elements not intended to be intervisible, or equally impact on the visual connection between historically linked elements within the HLCA, due to the nature of the development. Whilst the proposed development is unlikely to detract from the understanding of the dominant HLCA character as identified within the character area description as a largely unenclosed and evolved/irregular and varied enclosure landscape, there remains the possibility that it could experience some impact.

## HLCA005 Llangynwyd

**Table 31: HLCA005 Llangynwyd – relative importance in a national context**

Step C Value	Very High / Very Good 5	High / Good 4	Moderate / Medium 3	Low 2	Very Low / poor 1
Rarity					X
Representativeness					X
Documentation					X
Group Value					X
Survival					X
Condition					X
Coherence					X
Integrity					X
Potential					X
Amenity					X
Associations					X
SCORE					11

**3.21** Views from the HCLA towards the proposed development will in all cases contain elements of previously consented and constructed windfarms. Whilst these are modern elements in the view of the HLCA, they don't detract from an understanding of the settings of those elements of previous landscapes which are identified within the character area description. The proposed development will not create any inappropriate visual connections between elements not intended to be intervisible, or equally impact on the visual connection between historically linked elements within the HLCA, due to the nature of the development. Whilst the proposed development is unlikely to detract from the understanding of the dominant HLCA character as identified within the character area description as a largely unenclosed and evolved/irregular and varied enclosure landscape, there remains the possibility that it could experience some impact.

## HLCA012 Nant y Gadlys

**Table 32: HLCA012 Nant y Gadlys – relative importance in a national context**

Step C Value	Very High / Very Good 5	High / Good 4	Moderate / Medium 3	Low 2	Very Low / poor 1
Rarity					X
Representativeness					X
Documentation					X
Group Value					X
Survival					X
Condition					X
Coherence					X
Integrity					X
Potential					X
Amenity					X
Associations					X
SCORE					11

**3.22** Views from the HCLA towards the proposed development will in all cases contain elements of previously consented and constructed windfarms. Whilst these are modern elements in the view of the HLCA, they don't detract from an understanding of the settings of those elements of previous landscapes which are identified within the character area description. The proposed development will not create any inappropriate visual connections between elements not intended to be intervisible, or equally impact on the visual connection between historically linked elements within the HLCA, due to the nature of the development. Whilst the proposed development is unlikely to detract from the understanding of the dominant HLCA character as identified within the character area description as a largely unenclosed and evolved/irregular and varied enclosure landscape, there remains the possibility that it could experience some impact.



## OVERALL STAGE 4 EVALUATION SCORES

**3.23** The next stage of the ASIDOHLv2 process is to combine the scores of Step A, Step B and Step C.

**Table 33: ASIDOHLv2 Stage 4: Evaluation Scores**

HLCA Number	HLCA Name	Step A Score	Step B Score	Step C Score	Overall Score: A + B + C / 3	Grade of Overall Value
<b>Rhondda (Y Rhondda) Landscape of Special Historic Interest</b>						
<b>HLCA030</b>	Rhondda Uplands	22	11	11	<b>15</b>	Low
<b>HLCA029</b>	Rhondda Fawr: Enclosed Valley Sides	22	11	11	<b>15</b>	Low
<b>HLCA034</b>	Rhondda Fawr: Enclosed Valley Sides (Mynydd Penygraig)	22	11	11	<b>15</b>	Low
<b>HLCA032</b>	Parc Cwm Brychinog	24	11	11	<b>15</b>	Low
<b>HLCA023</b>	Rhondda fach: Eastenclosed Valley Sides	22	11	11	<b>15</b>	Low
<b>HLCA024</b>	Rhondda Fach: Western Enclosed Valley Sides	22	11	11	<b>15</b>	Low
<b>Margam Mountain (Mynydd Margam) Landscape of Special Historic Interest</b>						
<b>HLCA013</b>	Upper Cwm Kenfig	22	11	11	<b>15</b>	Low
<b>HLCA010</b>	Mynydd Margam	22	11	11	<b>15</b>	Low
<b>HLCA005</b>	Llangynwyd	22	11	11	<b>15</b>	Low
<b>HLCA012</b>	Nant y Gadlys	22	11	11	<b>15</b>	Low

## 4. Stage 5 Assessment of Overall Significance of Impact

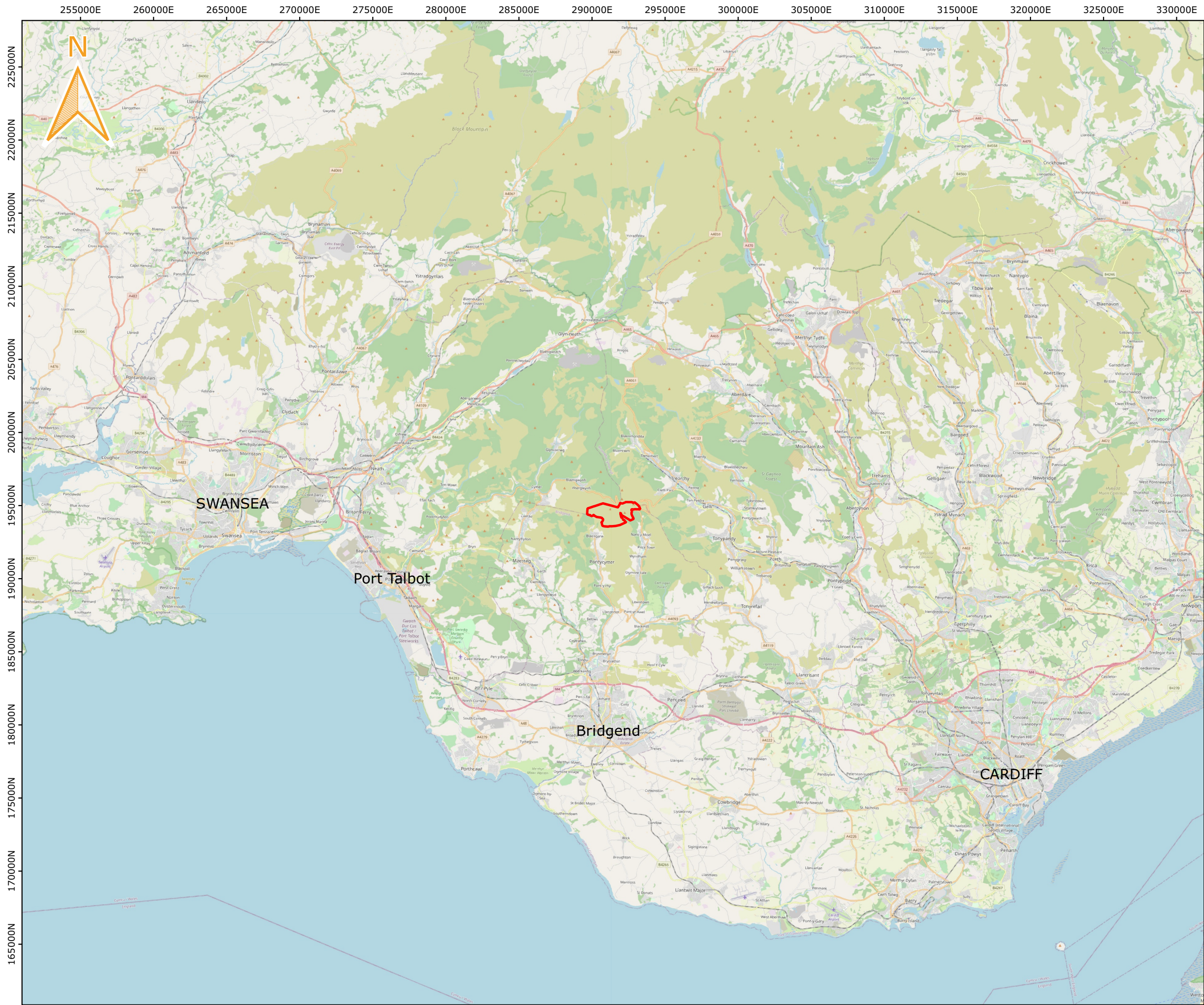
### Summary of Overall Significance of Impact on Rhondda Landscape of Special Historic Interest

- 4.1** It is anticipated that should the proposed development receive consent there would be a slight reduction in the overall value of the Rhondda Landscape of Special Historic Interest. This is due in the main to only seven of the 34 HLCA's having part of their area within the ZTV. Furthermore well under 50% of each HLCA identified would have part of their area within the ZTV. This will result in a no more than 'low' reduction of value of the Rhondda Landscape of Special Historic Interest.
- 4.2** The ASIDOHLv2 process has demonstrated only 'slight' impacts to each of the HLCA areas and overall evaluation scores of the areas affected are 'low'.

### Summary of Overall Significance of Impact on Margam Mountain Landscape of Special Historic Interest

- 4.3** It is anticipated that should the proposed development receive consent there would be a slight reduction in the overall value of the Margam Mountain Landscape of Special Historic Interest. This is due in the main to only five of the eight HLCA's having part of their area within the ZTV. This will result in a no more than 'low' reduction of value of the Rhondda Landscape of Special Historic Interest.
- 4.4** The ASIDOHLv2 process has demonstrated only 'slight' impacts to each of the HLCA areas and overall evaluation scores of the areas affected are 'low'.





**Key:**

Application Boundary

© OpenStreetMap contributors

0

2.5

5

7.5


10

Km

Scale @A3:1:250000

**Archaeology  
Collective**

**HCUK  
GROUP**

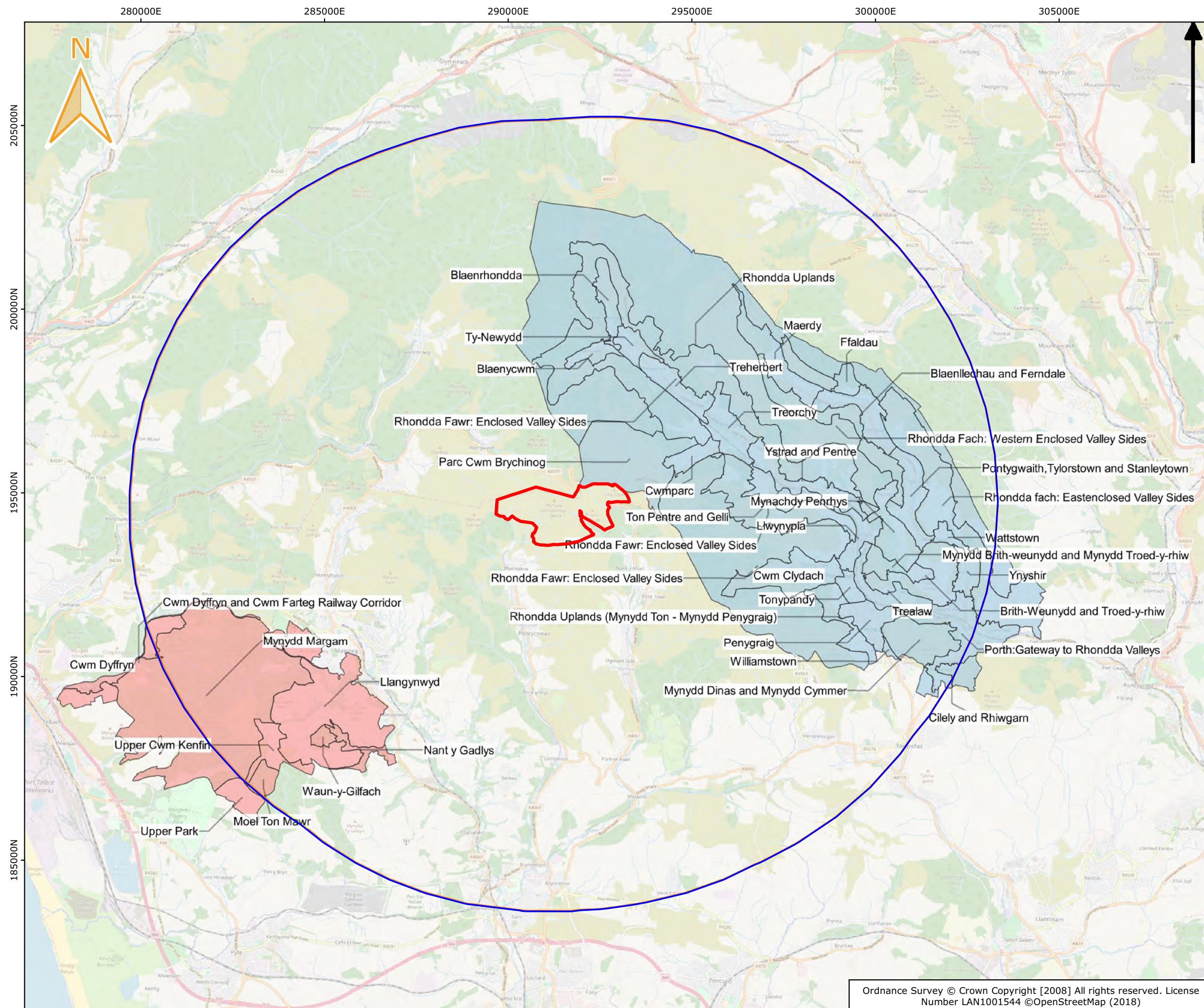
**Upper Ogmore  
Windfarm,  
Bridgend, Wales -  
ASIDOHL2**

On behalf of RES Ltd

**Figure 1**  
Site location plan

Project No.00294D | 15/7/2020 | Drawn By: JM





**Key:**

- Application Boundary

**Registered Historic Landscapes**

- Margam HLC Areas
- Rhondda HLC Areas

© OpenStreetMap contributors

0 1 2 3 4 5

Km

Scale @A3:1:100000

**Archaeology Collective**

**HCUK GROUP**

**Upper Ogmore Windfarm, Bridgend, Wales - ASIDOHL2**

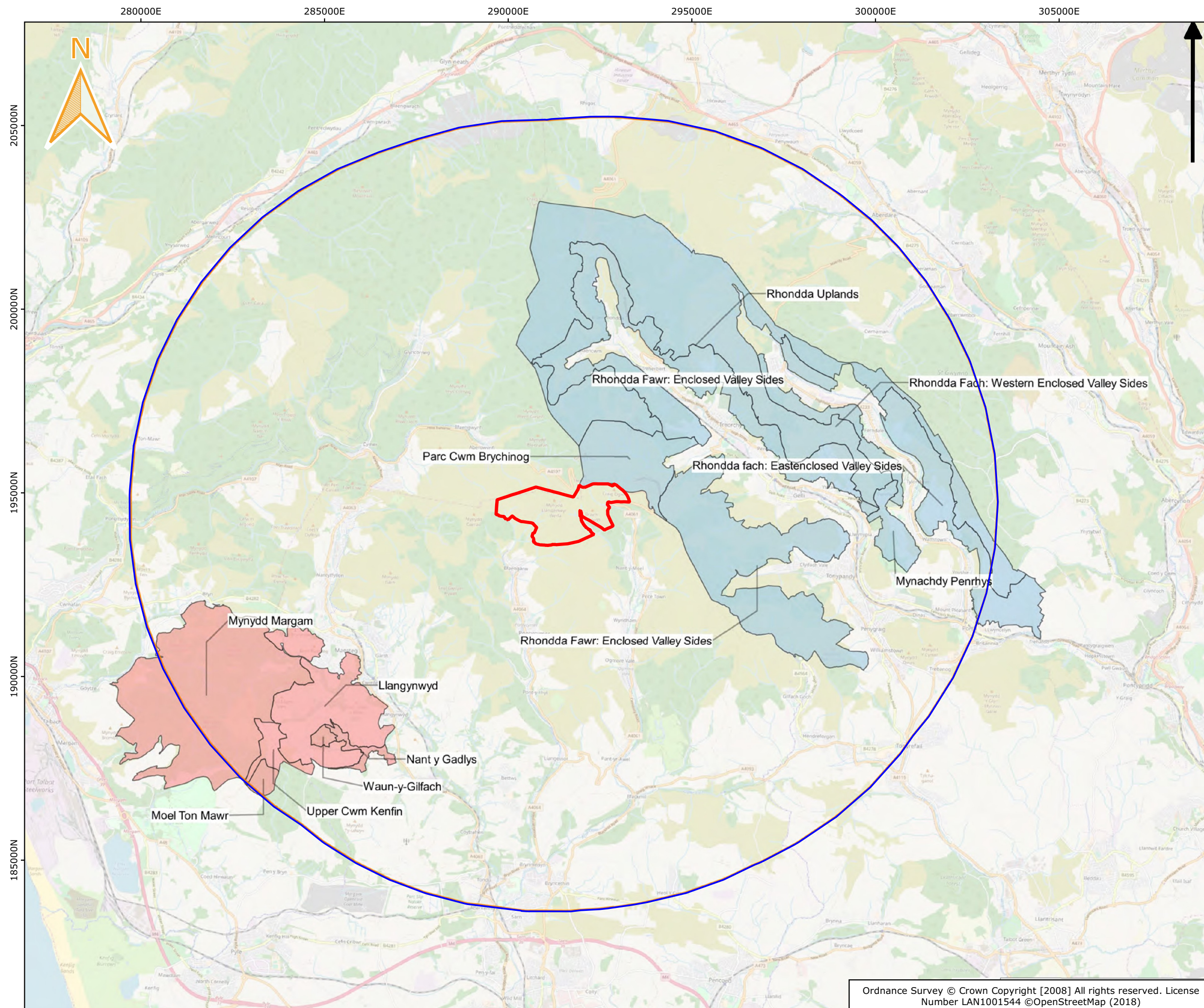
On behalf of RES Ltd

**Figure 2**

All Historic Landscape Character Areas within 10km of application area

Project No.00294D | 19/7/2020 | Drawn By: JM





**Key:**

Application Boundary

Registered Historic Landscapes

Margam HLC Areas

Rhondda HLC Areas

© OpenStreetMap contributors

012345

Km

Scale @A3:1:100000

Archaeology Collective

HCUK GROUP

Upper Ogmore Windfarm, Bridgend, Wales - ASIDOHL2

On behalf of RES Ltd

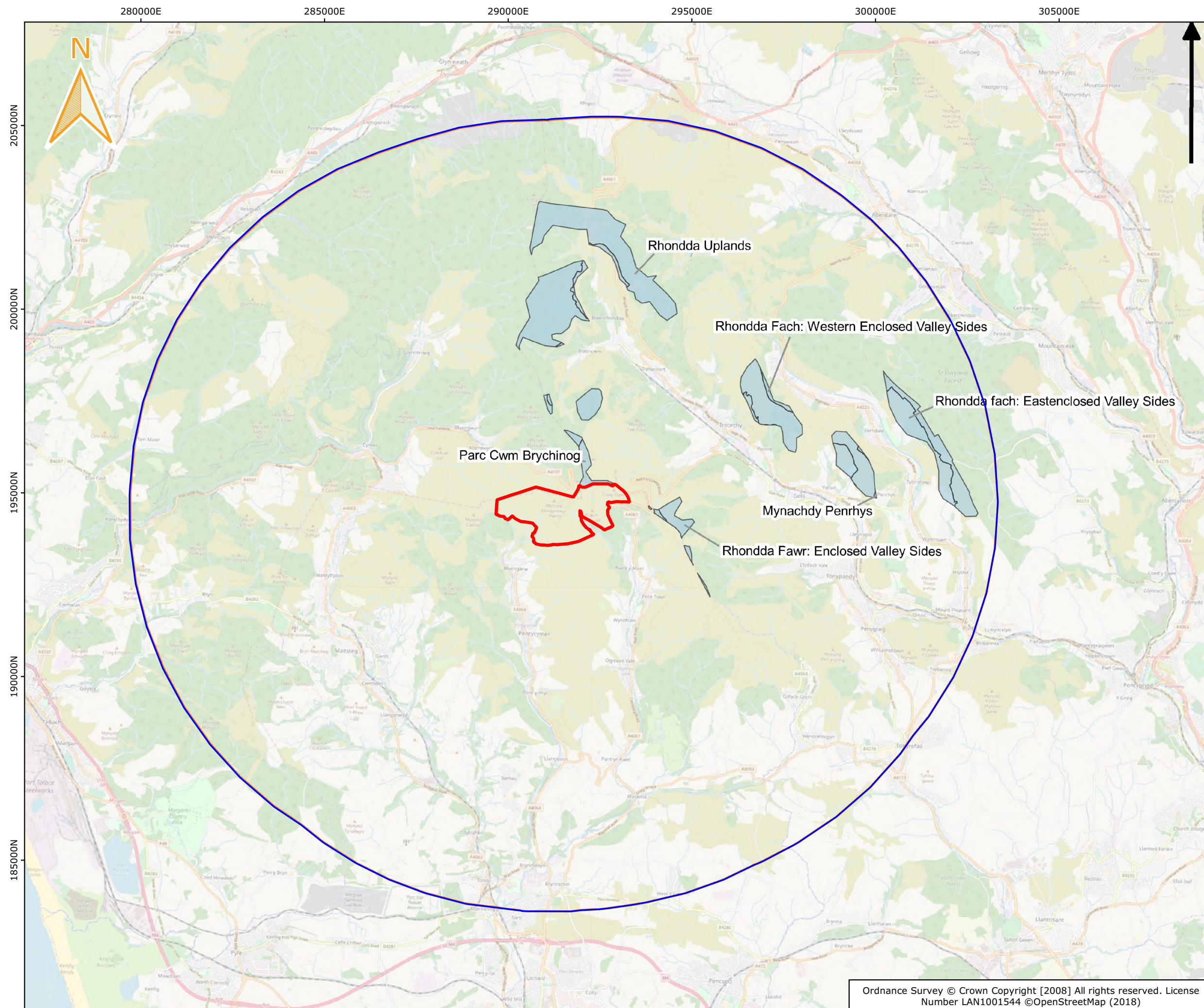
**Figure 3**

Historic Landscape Character Areas filtered by bare earth Zone of Theoretical Visibility

Project No.00294D | 19/7/2020 | Drawn By: JM

Ordnance Survey © Crown Copyright [2008] All rights reserved. License Number LAN1001544 ©OpenStreetMap (2018)





**Key:**

- Application Boundary
- Registered Historic Landscapes
- Rhondda HLC Areas

© OpenStreetMap contributors

0 1 2 3 4 5

Km

Scale @A3:1:100000

Archaeology Collective

HCUK GROUP

**Upper Ogmore Windfarm, Bridgend, Wales - ASIDOHL2**

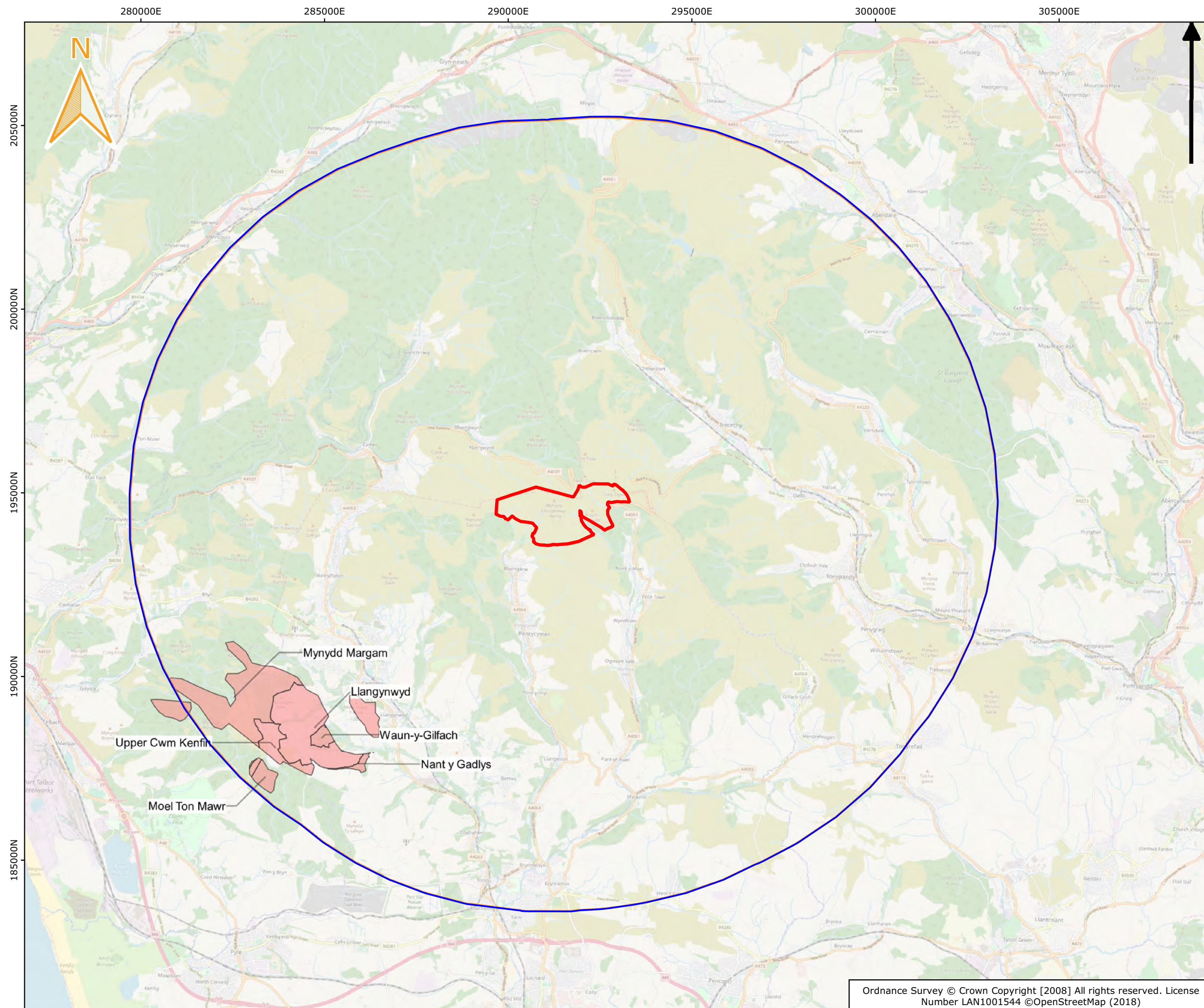
On behalf of RES Ltd

**Figure 4a**

Portions of HLC Areas filtered and clipped to bare earth ZTV in the Rhondda Registered Landscape of Special Historic Interest

Project No.00294D | 19/7/2020 | Drawn By: JM





**Key:**

Application Boundary

Registered Historic Landscapes

Margam HLC Areas

© OpenStreetMap contributors

0 1 2 3 4 5

Km

Scale @A3:1:100000

Archaeology Collective

HCUK GROUP

**Upper Ogmore Windfarm, Bridgend, Wales - ASIDOHL2**

On behalf of RES Ltd

**Figure 4a**

Portions of HLC Areas filtered and clipped to bare earth ZTV in the Margam Mountain Registered Landscape of Special Historic Interest

Project No.00294D | 19/7/2020 | Drawn By: JM